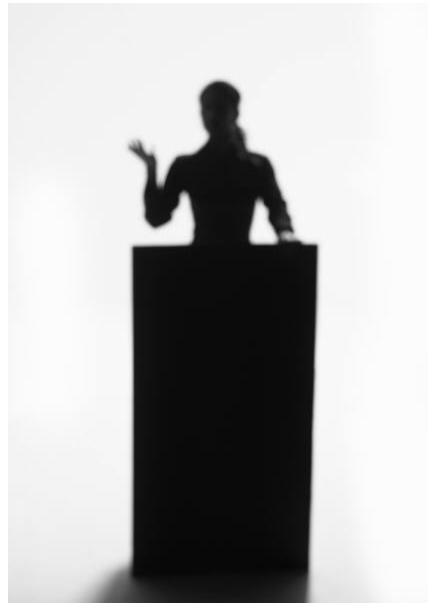


# Syllabus for SPCH 110A1-2 & SPCH 112A1-2

## Forensics Workshop & Argumentation & Debate Workshop

Associate Professor: Brenda Ahnholz, [bahnholz@ohlone.edu](mailto:bahnholz@ohlone.edu), (510) 979-7934 or Rm. 6308  
Professor: Kay Harrison, [kharrison@ohlone.edu](mailto:kharrison@ohlone.edu), (510) 979-7441 or Rm. 2322



You can earn one or two units of transferable credit by enrolling in the Ohlone College Non-Traveling Speech and Debate Team (Speech 110/112). By completing the following options you can receive an A grade for one or two units of credit that can be transferred to the CSU system, meet an elective requirement for your AA/AS degree or count towards your Speech & Communication Studies Certificate or AA degree. All you have to do is complete any three options for one unit of credit, or complete six options for two units of credit. For each event you attend, you must submit a maximum 1 page typed critique of the speaker or speaking event. All papers are due May 15, 2009, the last day of instruction for this semester. No late papers will be accepted.

**It is your responsibility to find out dates and times for any approved events.** Please check the Monitor, Ohlone's weekly newspaper, or [www.ohlone.edu](http://www.ohlone.edu) to check for the weekly events. You are responsible for enrollment in the course and completion of the class work. If taking this class puts your units this semester at an overload (18 units), you are responsible for seeing a counselor to get permission for taking this class. If at the end of the semester your name is on the class roster and you have not attended or participated in the required activities or turned in your critique papers, you will receive a failing grade.

## **TO REGISTER for SPCH 110/112**

To register for one of these classes please go to WebAdvisor at the Ohlone College website [www.ohlone.edu](http://www.ohlone.edu). All students are responsible for their registration to this class. Again, for unit overloads (18 units per semester), please see an Ohlone College counselor during drop-in hours for permission to take this class. Please see section numbers and activity guidelines below.

### **Spring 2009 Section Numbers**

SPCH 110A1 – Forensics Workshop – 1 unit, 040781

SPCH 110A2 – Forensics Workshop – 2 units, 040782

SPCH 112A1 – Argumentation & Debate Workshop – 1 unit, 040784

SPCH 112A2 – Argumentation & Debate Workshop – 2 units, 040785

### **UNIT/ACTIVITY GUIDELINE**

Students should complete the following for:

#### **SPCH 110/112 - A1 - 1 UNIT**

- Three options from the attached activities sheet

#### **SPCH 110/112 - A2 - 2 UNITS**

Choose one of the following:

- Six options from attached activities sheet (or)
- Participate as an active member of ASOC, ICC or the Student Ambassador program

#### **SPCH 110/112 - A3 - 3 UNITS**

- Students taking the three-unit option of SPCH 110/112 must join the Forensics team and attend the class on Tuesday and Thursday afternoons. All tournament travel is based on funding availability. To join the Forensics Team, please contact Kay Harrison, Director of Forensics at (510) 979-7441 or [kharrison@ohlone.edu](mailto:kharrison@ohlone.edu), or Matt Freeman at [mfreeman@ohlone.edu](mailto:mfreeman@ohlone.edu)

*For more information about the 1 and 2 unit options of SPCH 110/112, please contact Brenda Ahnholz at (510) 979-7934 or [bahnholz@ohlone.edu](mailto:bahnholz@ohlone.edu) or Kay Harrison at: (510) 979-7441 or [kharrison@ohlone.edu](mailto:kharrison@ohlone.edu)*

## **SPCH 110/112 – Forensics/Argumentation & Debate Workshop Activities**

The following list of activities is approved for SPCH (110/112) – Forensics/Argumentation & Debate Workshop credit for the Spring semester of 2009. For the one unit class (SPCH 110/112A1), students must complete three of the following options. For the two-unit class (SPCH 110/112A2), students must complete six of the following options.

Papers for these events should include a summary of the speech and a critique of the presentation. The critique should include comments on content, organization and delivery. Please see sample student critique paper at:

<http://www.ohlone.edu/instr/speech/docs/samplestudentevaluationspch110112.pdf>

### **Public Speeches**

- Attend ANY Speech & Communication Studies Department Speakers
- Attend ANY Brown Bag Seminars at Ohlone College including: Math, Science, & Technology Division Brown Bag Seminars
- Attend World Forums at Ohlone College – Dates to be announced
- Attend ANY Club Speakers including Speech Communication Club speakers
- Attend Speech Night in May 2009
- Attend or participate in a public debate or a public speech in your community
- Attend or participate in the Spring Fling Intercollegiate Forensics Tournament on Sat. May 2, 2009 – Please contact your SPCH instructor for more information about registration.
- Attend ANY Mini Communication Seminars held in the Maggie Morrisson Speech Communication Lab in HH-216.

*Please check the Ohlone College Monitor or [www.ohlone.edu](http://www.ohlone.edu) for all dates, times and location of events.*

### **Meetings**

- Attend or participate in ANY Inter Club Council (ICC) meeting. Meetings are Tue. from 2:30-3:00 p.m. Room TBA
- Attend or participate in ANY Associated Students of Ohlone College (ASOC) meeting. Meetings are Tue. from 4:30-6:30 p.m. Room TBA
- Attend or participate in ANY Speech Club meeting. Meetings to be announced.
- Attend or participate in ANY Ohlone College Board of Trustees meeting. Meetings are held on the 2nd and 4th Wed. of every month at 7:00 p.m. in the Child Care Center

*Reaction papers for these events should include a summary of the meeting agenda and a critique of the meeting format and decision making process.*

### **Forensics Class & Tournaments**

- Attend ANY Forensics/Argumentation & Debate class meeting. Class meets on Tue. and Thurs. from 3:00-5:00 p.m. in 4104A
- Attend or participate in the Ohlone College Speech Night (May 2009). Date TBA
- Attend or participate in the Spring Fling Intercollegiate Forensics Tournament on Sat. May 2, 2009 – Please contact your SPCH instructor for more information about registration.
- Attend an intercollegiate Forensics Tournament. See <http://ncfa.org> for calendar

*Reaction papers for these events should include a summary of the speech and a critique of the presentation. The critique should include comments on content, organization and delivery.*

## **Service Learning**

- Volunteer to critique student speeches/outlines in the Maggie Morrisson Speech & Communication Lab in HH-216. Lab hours TBA

*Reaction papers for these speeches should include a summary of the speech and a critique of the presentation. The critique should include comments on content, organization and delivery.*

## **Grading Criteria**

Students who turn in the required number of papers that follow the critique format (organization, delivery and content) and are typed and carefully proof read with little to no grammatical errors will receive an A in SPCH 110-112A1-2. Students who do not follow these guidelines may receive a lower grade. Students who turn in less than 70% of the required work or the papers are not written at a collegiate level will receive a non-passing grade. Reminder, students wanting to earn a Speech & Communication Studies Certificate must receive a B or better in ALL SPCH courses including SPCH 110-112A1-2.