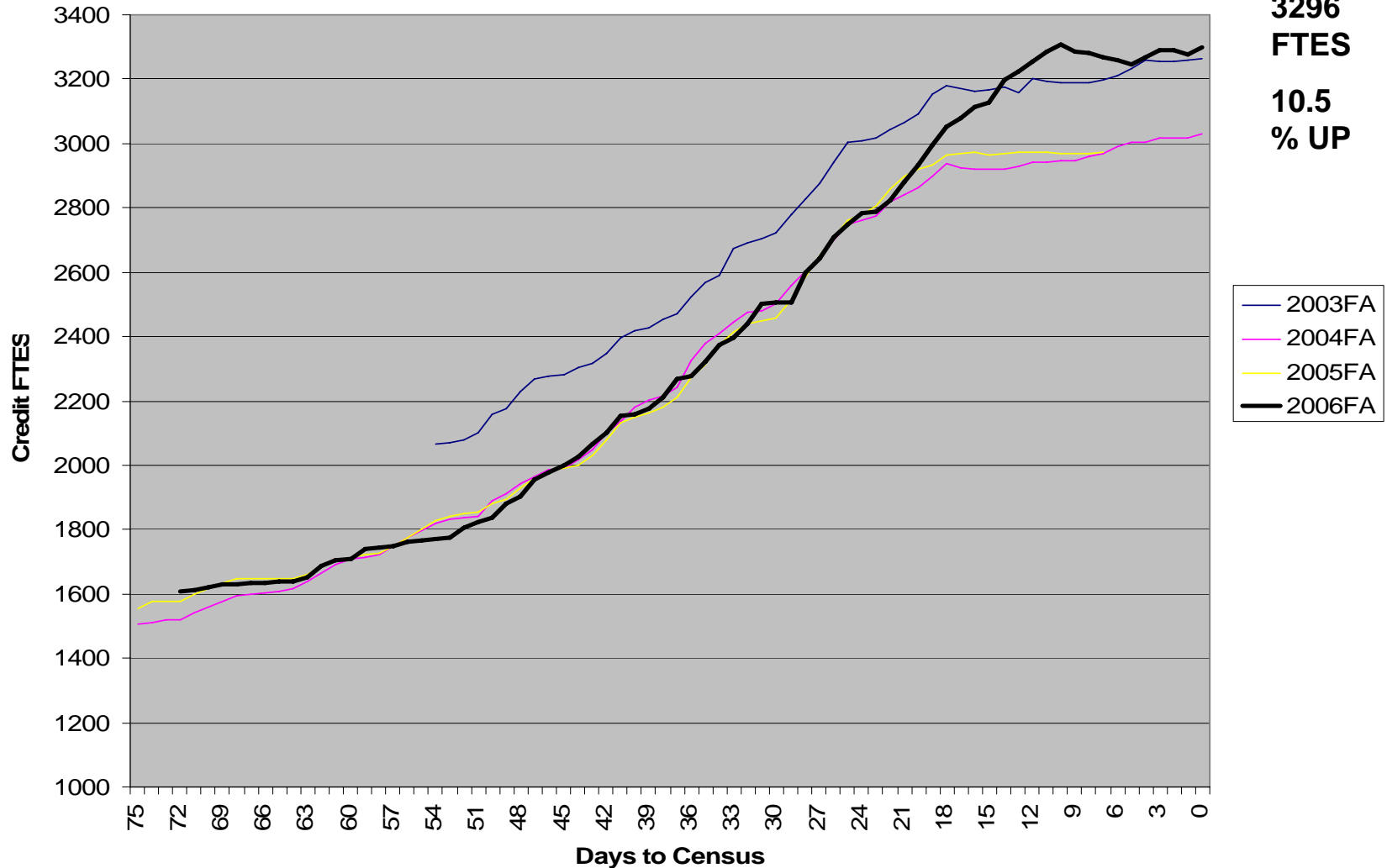
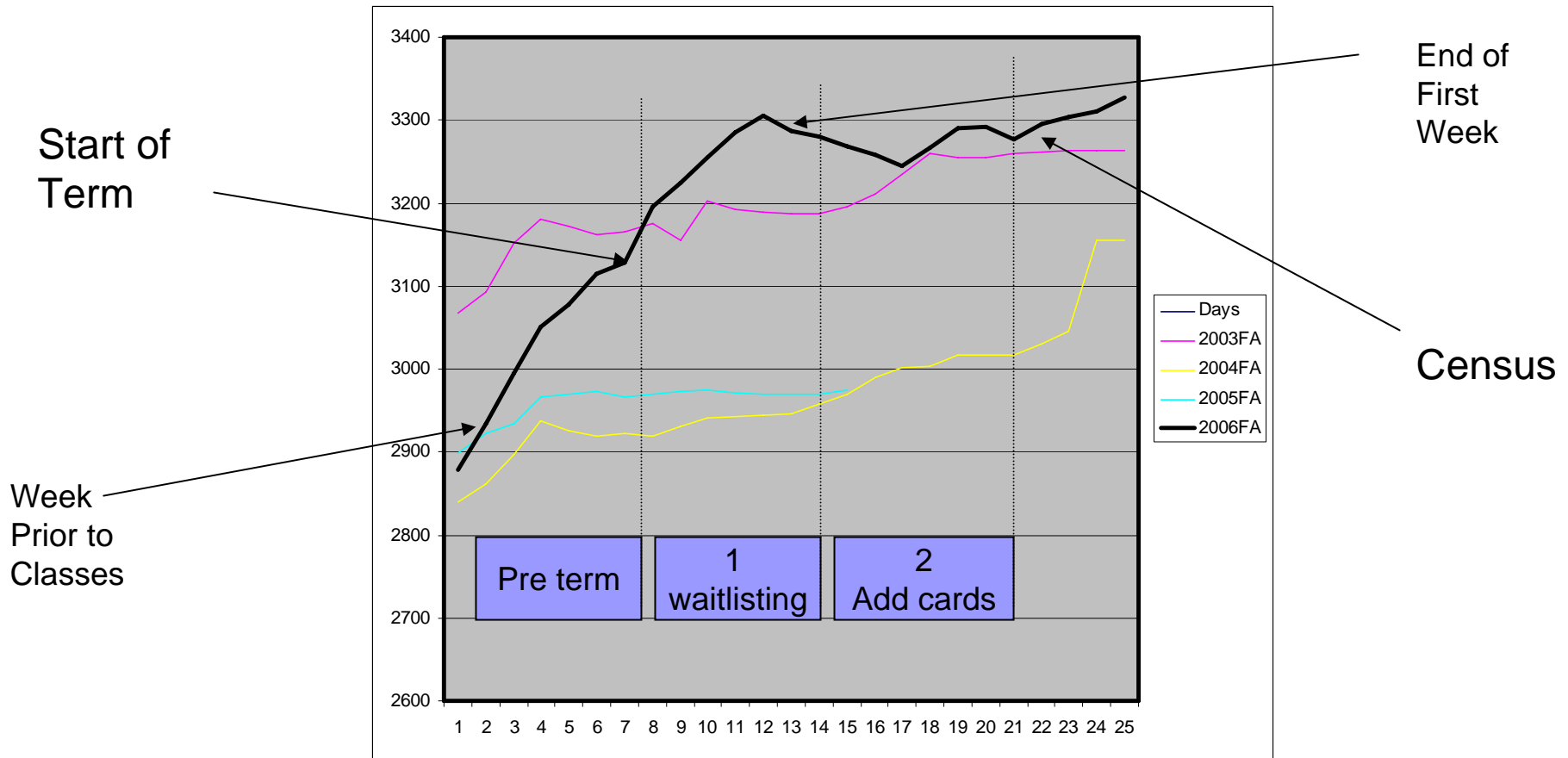


4 year FTES by enrollment

**3296
FTES
10.5
% UP**



3 Week Close up



Population Comparison

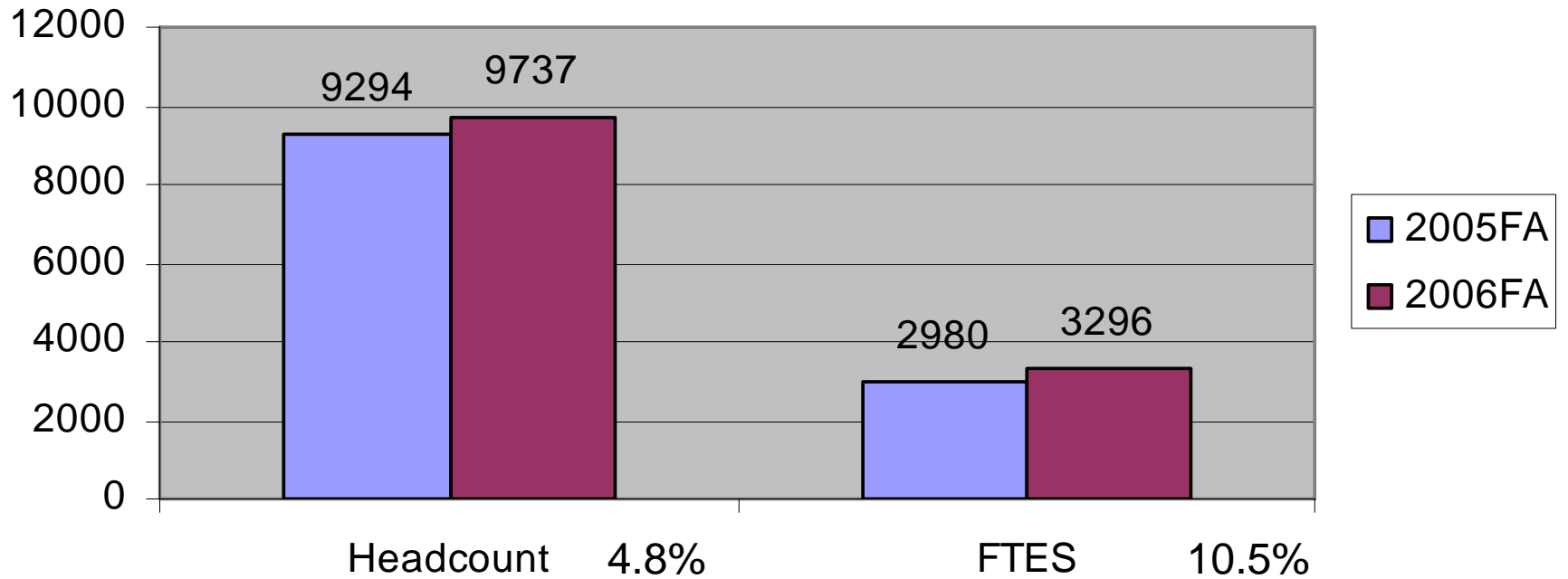
■ 2005FA

- - SP
- - Consortium
- Reported (EOT)
Positive Attendance
- All short term classes
included

■ 2006FA

- No SP added
- No Consortium
- Estimated Positive
Attendance (80%)
- Short term classes
only with early
enrollment

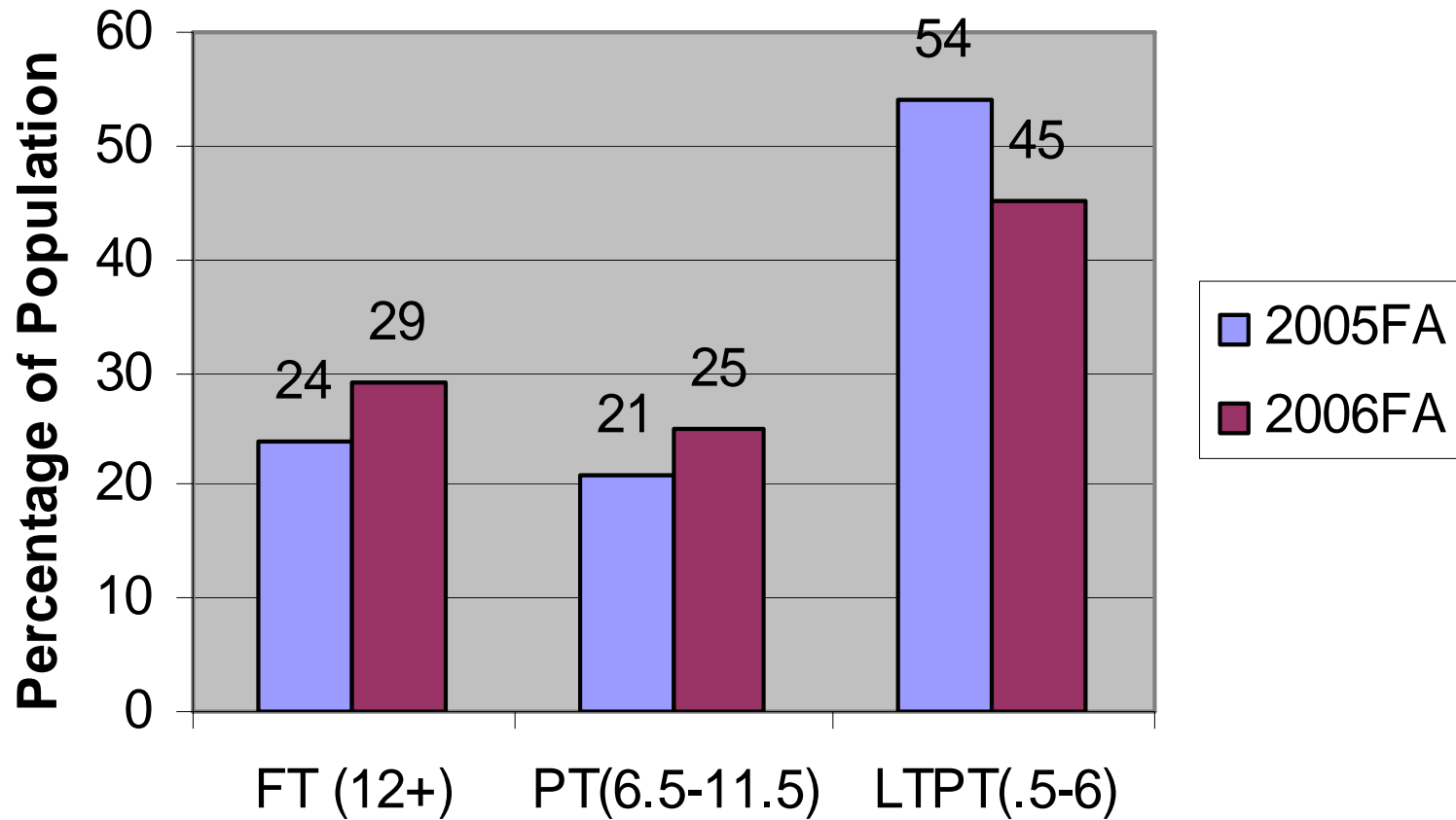
Headcount and FTES



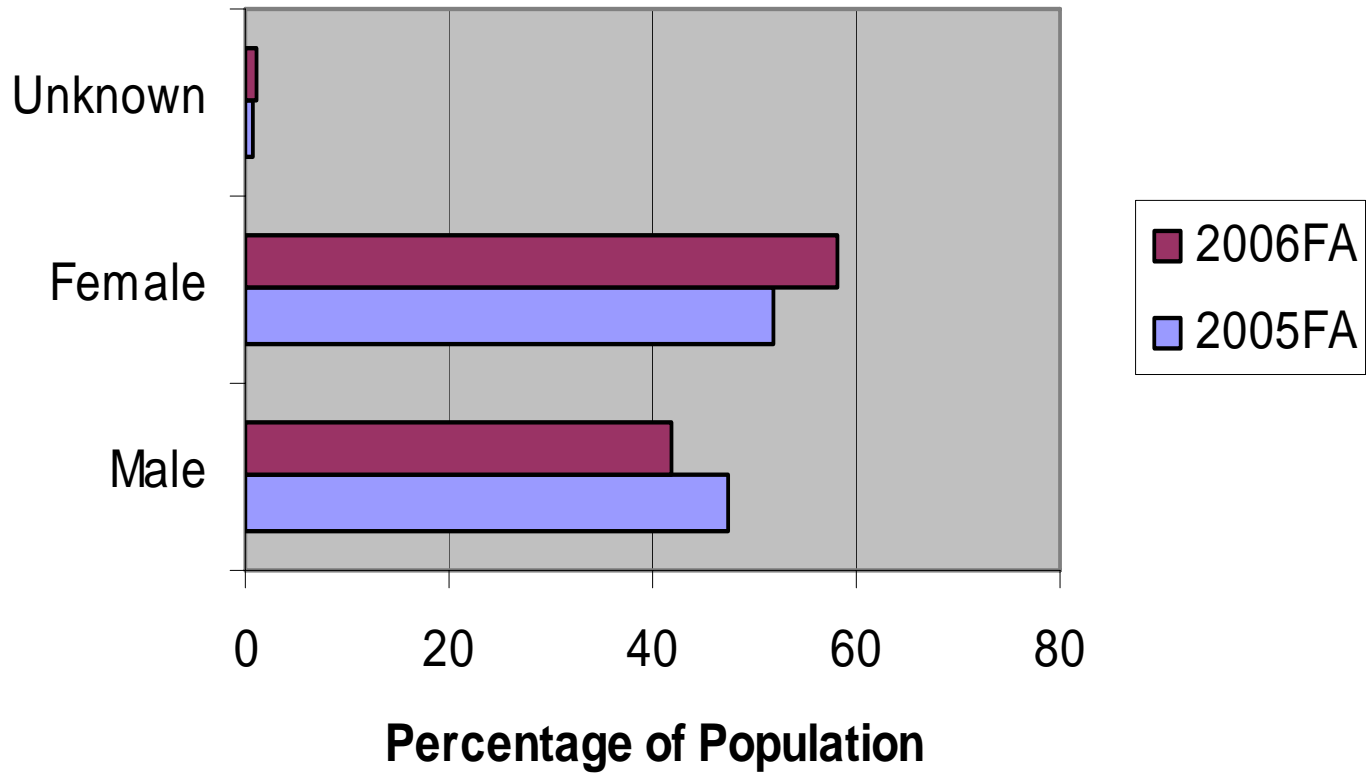
Department	2005FA	2006FA	#Chg	% Chg
ENGL	497	555.68	58.68	11.8%
PSY	78.49	106.68	28.19	35.9%
BA	126.91	152.46	25.55	20.1%
TD	75.88	97.62	21.74	28.7%
ECS	37.32	53.66	16.34	43.8%
ART	113.81	129.89	16.08	14.1%
BIOL	161.04	174.96	13.92	8.6%
MATH	345.69	359.15	13.46	3.9%
MM	14.34	27.75	13.41	93.5%
ESL	40.9	52.32	11.42	27.9%
SPCH	82.72	92.91	10.19	12.3%
PE	185.19	193.1	7.91	4.3%
SOC	41.3	48.22	6.92	16.8%

	2004/05	2005/06 1% growth	2006/07 Forecast	#CHG	% chg	9/11/2006
From Previous Summer	172	890	201			
Fall	3291	3294	3636	342	10.4%	3296 CD xwfr 400 HS outstanding enrolli 40 Short term enrollment
Spring	2987	2920	3225	305	10.4%	-100 Non Resident
From Current Summer	19	669	718			3636
Flex Adjust	25	32	15			
Consortium	260	240	250			
Total	6754	8045	8045			
TARGET	7965	8045	8045			
Growth %		1%	0.000%			

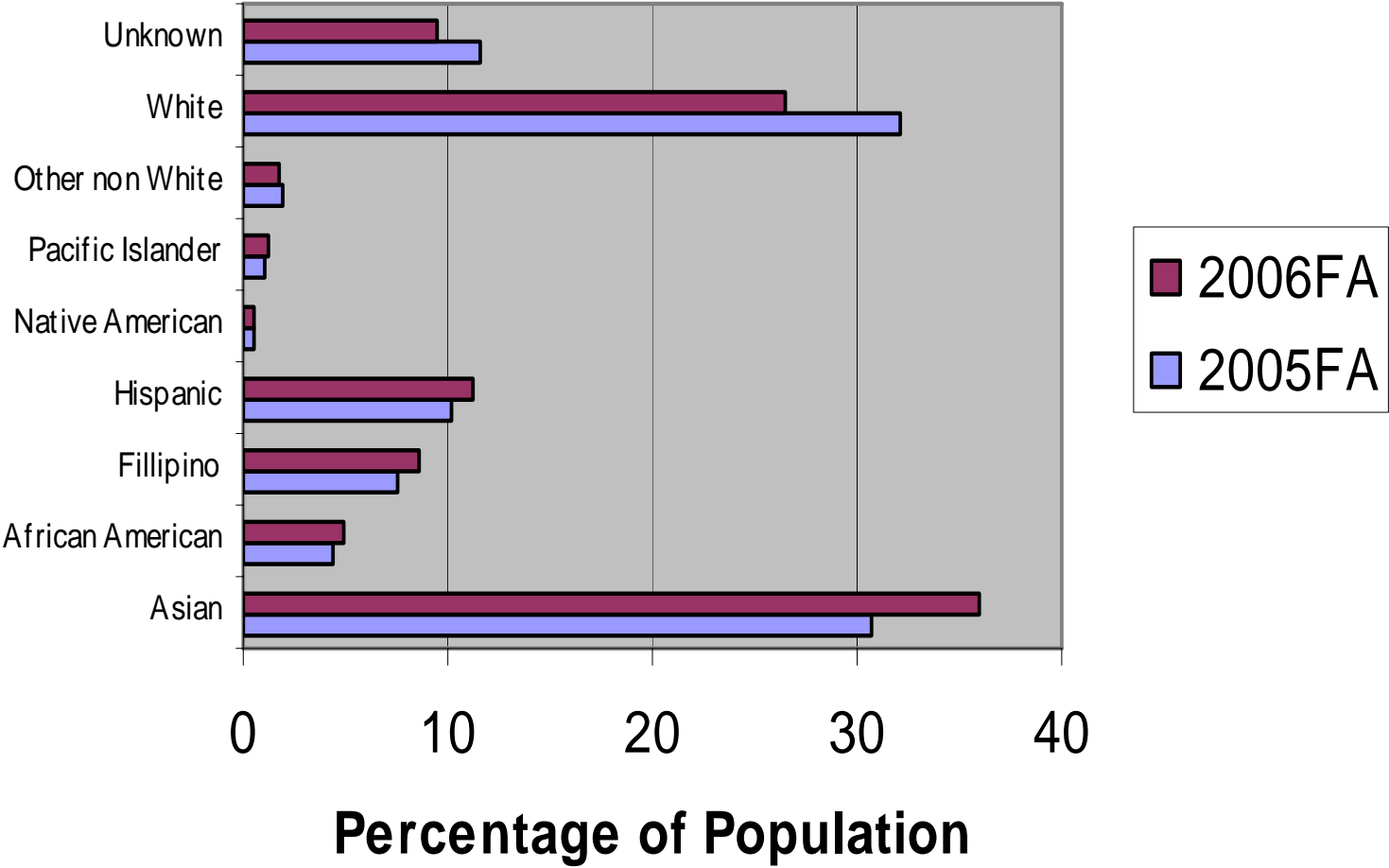
Unit Load Comparison



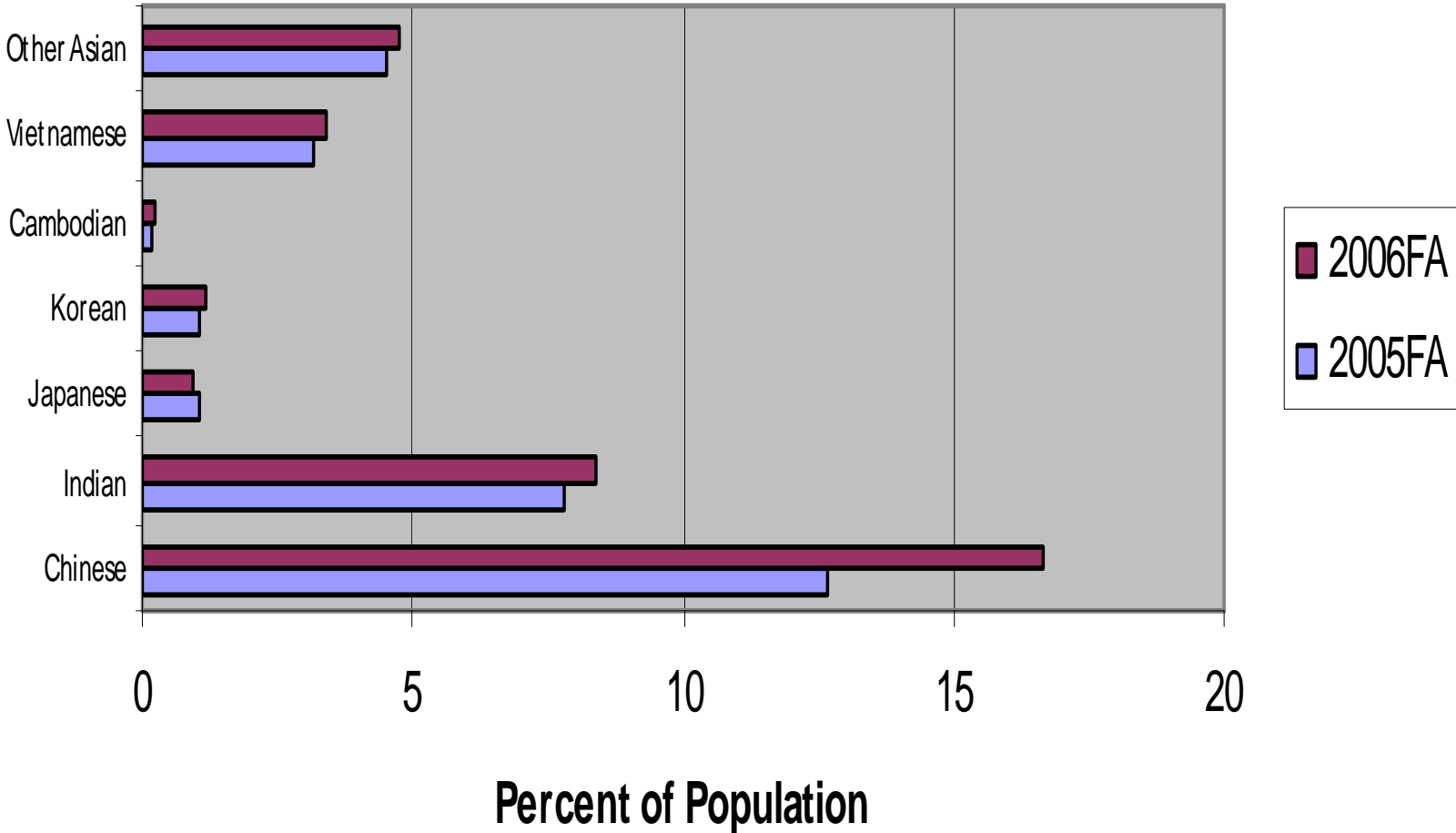
Gender



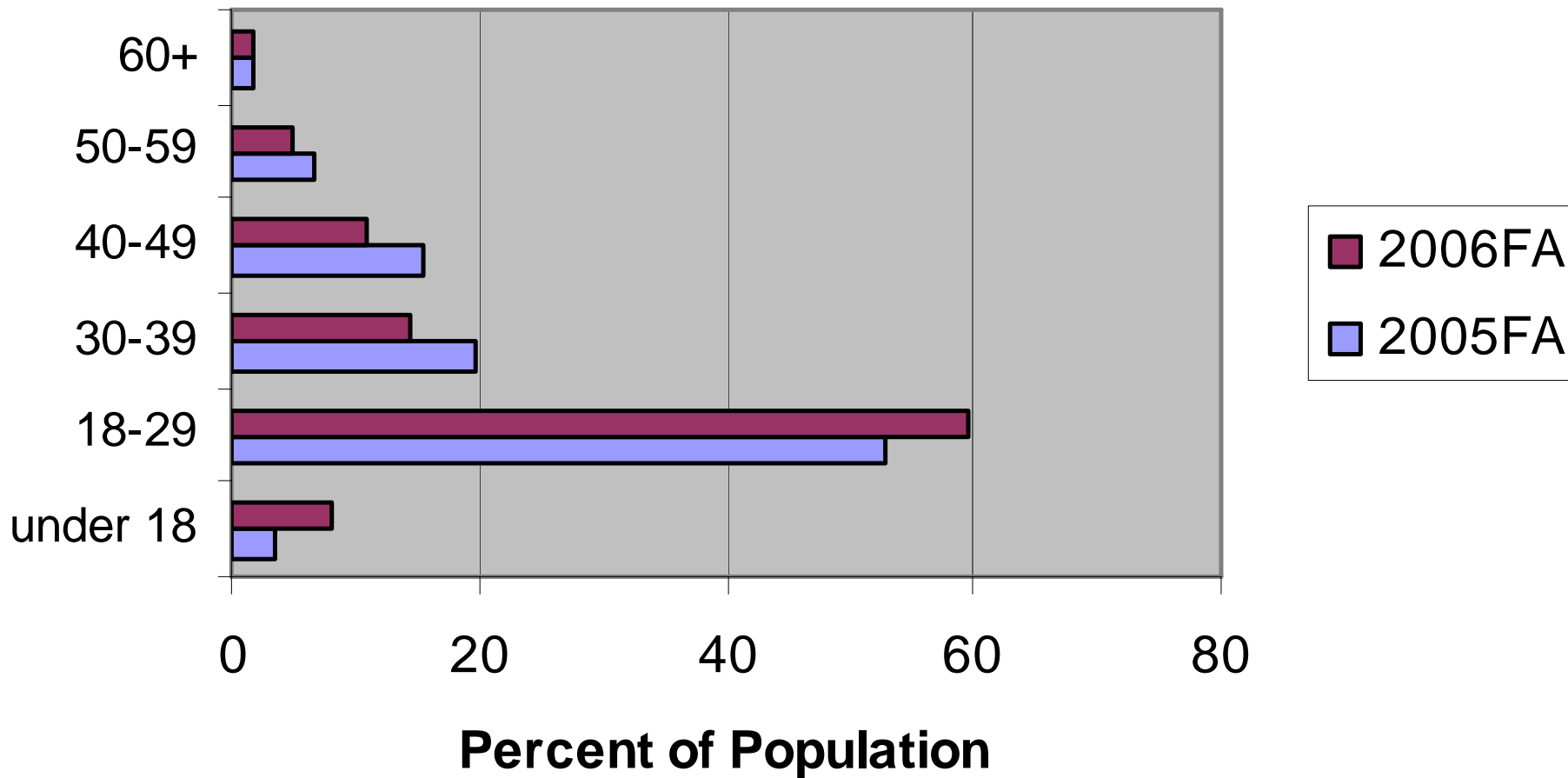
Ethnicity Distribution



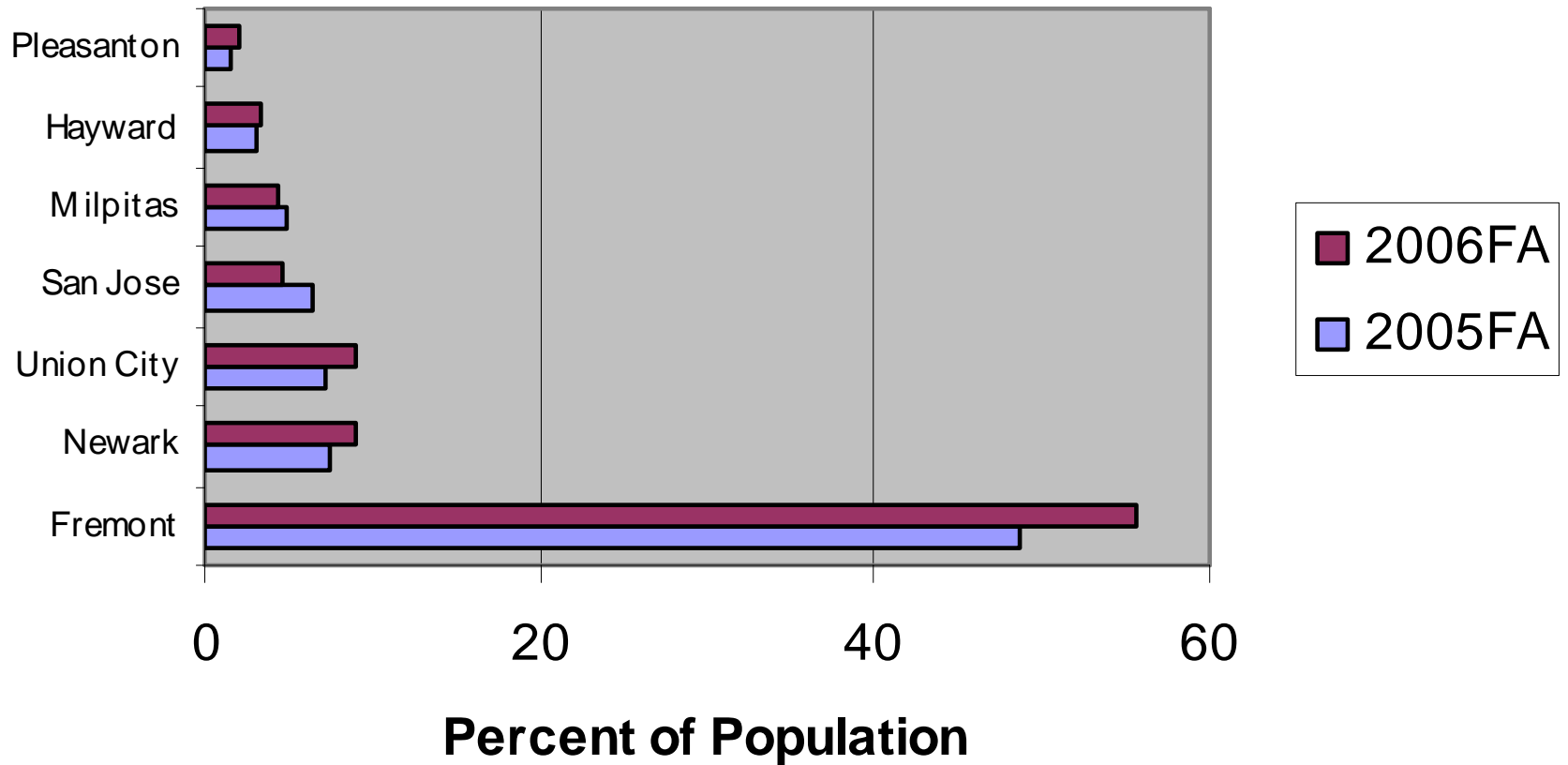
Categories under "Asian"



Age Distribution



City of Residence



Time of Day Enrollments

