



October 2007

Volume VII of the Ohlone International Student Newsletter

Stay “in status” with USCIS (Immigration)!

You must not drop below 12 units. Do NOT drop classes, and remember to check on WebAdvisor to ensure that an instructor has not dropped you from a class. Remember to report a **change of address** to the Office of International Programs and Services within 10 days of moving. You can change your **email** address using WebAdvisor. Please check your email, as that is how Ohlone College communicates with students.

Are you traveling over the holidays?

If you are traveling be sure your passport is current. You also need to have your I-20 signed on page 3 (within the last year). Please request the signature at least one week before your departure date. If you are traveling abroad and your visa is expiring you will need to renew it before you return to the United States. Ask about those requirements. Happy holidays!



Does your form I-20 expire in December?

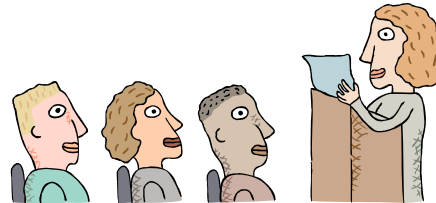
This is not a problem if you are returning home to stay, or have been accepted at another college, which will issue you a new I-20. However, if you are remaining at Ohlone your I-20 must be extended before the end of the term. Please notify the Office of International Programs and Services, and provide an updated Educational Plan showing when you will be completing your work at Ohlone.

Transferring for Spring 2008?

Congratulations! Bring your admission letter in, then at the end of the Fall Term your SEVIS (Immigration) record will be transferred to your new school.

Spring 2008

Ohlone Spring Semester begins January 28.



Are you graduating and hoping to obtain permission to work? Students may apply for Post-Completion Practical Training on completion of their degree requirements. You must submit the application to Immigration before the end of the term, and the work must be “directly related to the student’s field of study and commensurate with the student’s educational level”. The Office of International Programs and Services can help you with the online application process and follow-up documentation.



Registration for Spring 2008

Please be sure to register for Spring 2008 as soon as your appointment time comes up, so that you will get the classes you need and prefer. Fees are due at the time you register, and not later than the beginning of the semester. If you wish to set up a payment plan you can make arrangements with the Cashier to do that. You will be blocked from sending transcripts, or registering for the next term if you have not paid your fees.



See a counselor. It is good to make an early appointment to see a counselor to be sure you are on track with your graduation and transfer requirements. Counselor Mandy Yip specializes in working with international students, although you may see any counselor.