



**Variety in  
Smith Center  
schedule**

– Page 4

**Overloaded  
schedule  
a bad idea**

– Page 2



# MOHLONE COLLEGE MONITOR

Vol. XXXVII No. 1

Fremont, California

Monday, August 28, 2006



Ironworkers secure the final metal beam in the new Newark campus building in last week's "topping off" ceremony.

## Newark campus 'topped off,' other projects move ahead

By ANNA NEMCHUK  
Editor-in-chief

Aug. 17 saw the crowning white beam lowered on the largely completed steel skeleton of Ohlone College's Newark Center for Technology and Health Sciences. Ohlone representatives, including President Doug Treadway, signed the painted beam prior to its ascent to the future building's roof.

In a poetic accompaniment to Ohlone's stated environmentally friendly policies, the ironworkers' "Topping Out" ceremony hearkens back to ancient Northern European mythology when houses were built of wood and a branch from the tree used was placed on the topmost point of the house to allow the plant spirit a place to live and beg its favor for the occupants. Turner Con-

struction provided an article about the rite at [www.ohlone.edu/org/college\\_rel/pressreleases/2006/20060817toppingouttradition.html](http://www.ohlone.edu/org/college_rel/pressreleases/2006/20060817toppingouttradition.html)

The Newark Center, at around 135,000 sq. ft., is a consequence of Ohlone's Educational Master Plan, proposed March 6, 2002 for the years 2001 to 2011, to increase and improve the college's ability to serve the community as a center of transfer education, career training and general learning and do it with an eye toward care of the environment. The Master Plan can be viewed at [www.ohlone.edu/org/instruction/masterplandocs.html](http://www.ohlone.edu/org/instruction/masterplandocs.html)

In an effort to meet Gold Level Leadership in Energy and Environmental Design (LEED) certification standards given by the U.S. Green Building Council, a voluntary

agreement-based national standard for high-value, sustainable buildings, the Newark Center is already furnished with geothermal ground coils for a heating and cooling system, solar power generators, recycled materials and water-saving landscaping. Because of last spring's rains, work on the Center has been delayed, though Turner Construction has done its best to offset the wasted time, going so far as to put workers on overtime to push the project ahead. The inceptive goal to open the Newark Center to students by January 2008 is probably not realistic, said Birke-dahl, yet chances are good classes will begin that winter.

Measure Bond A, approved March 5, 2002, is being used to finance Ohlone's construction

*Continued on Page 4*

## Tuition to drop from \$26 to \$20 a unit this spring

By OMER AHMED  
News editor

The cost of tuition will be decreased at Ohlone and other California community colleges next semester. The reduction will be from \$26 per unit to \$20.

The change is part of Gov. Arnold Schwarzenegger's 2005-06 budget. The new budget will allocate general funds to cover the cost of the lower tuition rates in addition to giving \$700 million to community colleges for other uses. The budget also eliminates previously planned fee increases for CSU and UC schools and increases the

total funding for higher education to approximately \$19.1 billion.

Schwarzenegger's budget comes during a statewide drop in community college enrollment rates effecting as many as 39 schools. Director of Government Affairs at the Faculty Association of California Community Colleges (FACCC) Jennifer Baker said community colleges lost about 300,000 students last year with higher tuition cost being a significant reason.

Ohlone College Vice President and Deputy Superintendent Deanna Walston said Ohlone has experienced stable enrollment rates

*Continued on Page 4*

## President says welcome

**EDITOR'S NOTE:** The following is a welcome to Ohlone College for new and returning students from Ohlone President Doug Treadway.

Welcome students, staff and faculty to the fall semester 2006 at Ohlone College. As we enter campus we see construction in evidence and no doubt we will all experience some inconveniences. There are some major improvements taking place that take lots of time and cannot be simply done when we are in class sessions 10 hours a day, 6 days a week.

I hope you will bear with it and concentrate on the many positive things that are happening like ASOC's contribution of outdoor seating with umbrellas on the quads, new automated class wait listing, new learning communities, and a college-wide emphasis this year on environmental responsibility and sustainability.

Over at the Newark campus, the steel framing is up and we can now visualize what a wonderful new addition this college will be making to the community in 2008. You can see on the college website a live web-cam video stream of the construction day by day.

If you are interested in plans for this year you can go to the college web site and log onto the president's speech file. You will find a blog site also where you can send me your comments. I hope that everyone has a satisfying and successful fall term at Ohlone.

## Treadway makes environment a priority

From staff reports

Dr. Doug Treadway made environmental sustainability a key theme in his talk to Ohlone faculty and staff on Friday, reminding them that it is not the earth that needs saving.

"It is civilization, the very capacity of earth to sustain human life, that is now threatened," he said.

He explained the "green" features of Ohlone's new campus under construction in Newark, pointing out that the solar collectors will generate at least 30 percent of the electricity needed by the facility. Treadway has opposed the war in

Iraq and taken other strong positions in previous "state of the college" addresses. Friday he outlined the potentially catastrophic impact of global warming, and said, "the evidence for global warming is overwhelming, and political attempts to deny it are unconscionable."

He said he will appoint a Sustainability Coordinator and hold a campus-wide symposium in October to establish environmental priorities. Classes will be canceled during the symposium to encourage campus participation.

"We are consuming too much energy, using too much paper and creating too much garbage on this

campus," he said. "Every day needs to be Earth Day at Ohlone."

Treadway reported on projects coming up on campus, and recognized accomplishments by faculty and staff, including:

- Ohlone received one of only three federal grants under the National Science Foundation Quick Start program. Dean Ron Quinta's proposal was approved for \$250,000, to be used for Ohlone's biotechnology lab.

- The state budget for community colleges "is one of the best ones in recent memory," and Ohlone has some extra funds to be allocated for one-time projects.

- Two delegations from Ohlone visited China over the summer, and delegations from three Ohlone "sister colleges" in China visited the Fremont campus.

- World Forum topics this year will be U.S.-Mexico Relations and Immigration, the Darfur Region of Sudan, Human Rights, Freedom of Speech and Global Terrorism, and Ohlone Indian Perspective and Experience.

- Every student in Anu Ganguly's organic chemistry class last spring was accepted to a California UC, including the 2006 class valedictorian, Ayesha Moghul.

- Ohlone's enrollment for fall

semester is slightly ahead of last year and the year before, while most Bay Area campuses are down in enrollment. This spring, semester tuition will drop from \$26 to \$20 per unit, "which may give us a needed boost in enrollment."

- Ohlone Board of Trustees member Garrett Yee has been called up for military duty and is serving a six-month assignment in Baghdad. And James Keogh has returned from service in Afghanistan. He attended the California Police Academy and has resumed his duties as an Ohlone security officer.

Dates of the World Forums and other events will be announced.



Associated Collegiate Press /  
National Scholastic Press Association

All American  
1984 1985 1986  
1987 1988 1989  
1990 1991 1992

Regional Pacemaker  
1988

Journalism Association  
of Community Colleges  
First in General Excellence,  
Northern California

Fall 1994  
General Excellence  
Fall 2000  
General Excellence  
Fall 2004

**Editor in chief:** Anna Nemchuk  
**News editor:** Omer Ahmed  
**Opinion editor:**  
**Features editors:**  
**Sports editor:** Nick Zambrano  
**Photo editor:** Rostislav Tsvetanov  
**Staff writers:** Michael Aburas, Jessica Losee, Danelle Meyer,  
**Ad Staff:**  
**Photographers:**  
**Ad manager:** Danelle Meyer,  
**Adviser:** Bill Parks  
**Printer:** F-P Press



Offices are located in Room 5310 on campus, 43600 Mission Blvd., Fremont 94539-5884. Call (510) 659-6075. Fax: (510) 659-6076. E-mail: monitor@ohlone.edu

Opinions expressed in the *MONITOR* are those of the respective authors and are not necessarily those of the staff, the college or the Associated Students of Ohlone College. Unsigned editorials reflect the majority view of staff members. Advertising material is printed herein for informational purposes and is not to be construed as an expression of endorsement or verification of such commercial ventures by the staff or college.

The *MONITOR* is funded by the district, by the Associated Students of Ohlone College, and through advertising revenue.

The *MONITOR* is a member of the Associated Collegiate Press, Journalism Association of Community Colleges, Community College Journalism Association, California Newspaper Publishers Association, College Media Advisers and Society of Newspaper Design.



## OPINION

# Beware the overload!

By **OMER AHMED**  
News editor

This is a warning. A warning to all you eggheads and workaholics out there who have decided that the maximum 17.5 units allowed to students simply is not enough. I am here to communicate to you the dangers of the overload.

For those of you not aware, a student can go to the counseling office and request to be allowed to enroll for more units than is usually permitted - i.e. request an overload. A student with a 3.0 GPA can be cleared for 18.5 units, a ceiling of 21.5 is possible with a 3.2 and the sky's the limit for those with a 3.4 or above.

Sounds like a great deal and, at Ohlone's prices, it seems almost like grand theft academia. Come in quick like a hawk, work your bum off for a few months and fly away with extra units. I can quite honestly say that if you are willing to do the work, overloading seems like a good idea.

So much did I believe in overloading that last spring I sprung on the opportunity and enrolled for 26.5 units distributed over 10

classes. That's nine units over the usual maximum, about 75 percent more units than the average student's course load, easily more than twice the minimum for full-time enrollment and almost 4.5 times the minimum for half-time enrollment.

The first two weeks made me feel like the semester would be a breeze. My laboratory science course pretty much only involved me showing up as the grade was largely based on attendance. My three journalism classes were reviewing the same basic media concepts and my two literature classes provided short but interesting reading material. All was going according to plan. Even when the pace started picking up, I convinced myself that I could handle it. The only course I dropped was a 0.5 unit workout class bringing my total overload to 26 units.

However, things soon changed. One journalism course started off on hard news writing, the other commenced publication of the *Ohlone Monitor* in full force with me as Opinion editor and the third began studying social theories about the media. Additionally, my two English courses switched from short stories to novels and I could no longer ignore my three online classes.

Exhausted from late-night reading and/or long nights working on the *Monitor*, I used up all my allowed absences from my science course by oversleeping.

Time with friends was kept to a minimum as the weekends were exclusively for sleep and catching up with online classes. Eating, sleeping and bathing were often skipped so that I could make it to school on time or finish writing some paper. By the second month I was 10 pounds lighter, often sick, had bags under my eyes, a small beard and usually lumbered about half-asleep with a distinct odor flowing close behind.

By the time I had realized what I had done, it was too late to drop unless I wanted a face-full of Ws on my transcript. So this continued, with spring break being the only respite, an oasis of bathing and sleep, until finals.

Finals, quite simply, were hell. I was completely behind in the novels for my lit classes, I still had to attend the science lab every day despite already having finished all the actual work for that course, still had to do two months of journalism assignments and study for tests. To get through the concluding week, I

*Continued on Page 4*

## LETTER

# Recruiters just doing job

EDITOR:

I just finished reading your opinion article (May 3 issue, the final issue of spring semester) entitled Campus Military Recruitment: Fall Back, Soldiers.

I understand some people feel angry with military recruiters on campus. I would like to express my opinion to you now, and hope that you will consider adding it to your next paper.

I am a student at Ohlone College working toward my AA in American Sign Language. I recently joined the Army Reserves myself. I actually leave for Basic Combat training in nine days, May 26. I willingly signed up for the service on my own. Educational benefits were not my motive. I want to do something for our country instead of sitting back and complaining about the way the government is.

I know some of the recruiters that come on to campus. They either set up table and wait for people to approach them, or they walk around and answer questions. I have personally never seen anyone who is being harassed or pressured to talk to a recruiter. If someone did not want to talk to them, they can simply say no thank you and they will leave that individual alone. They are merely a presence on campus. I believe the reason they are allowed in the Quad rather than the free speech area is because they are compared to universities rather than solicitors. The service is an alternative to getting the trained skills you need in the field you want to work in.

I know if they read this article they would probably agree. I am not trying to argue with the editor-in-chief's opinion, but rather to let you know, they really are not doing anything for you to be bothered by. I hope you will reconsider their existence on campus, and maybe even thank them for doing a duty that does not fit your lifestyle.

I hope I have broadened your mind just a modest amount. The military is not for everyone, but recruiters should not be banned or subjected to the bottom of the stairs just for the sake of their presence disturbing people.

**SPC JESSICA MAYER**  
Ohlone student

## Campus Comment >>>

# How would you improve Ohlone College?



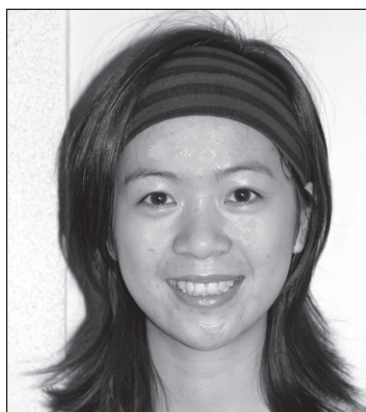
**GEOFFREY HIRSCH**  
Math Teacher

◆ "An extra building to house my tie collection." (Hirsch is known for his "expressive" ties.)



**GENIX ZHAN**  
Business

◆ "I think we need to improve the Web-Advisor system."



**ATI CHENI**  
Business

◆ "I would make the books in the Bookstore cheaper."



**JAVIER CAZARES**  
Business/psychology

◆ "Maybe more classes. Sometimes you need a certain class and it's already full."



**JOSHUA SESSIONS**  
American Sign Language

◆ "Maybe a map." (It was his first day on the Ohlone campus.)



# CAMPUS EVENTS

## August

**28-31 Book Buyback** -- in the Ohlone bookstore. Come earn some cash for old text books between 9 a.m. and 3 p.m. and again from 5 p.m. to 7 p.m. on Aug. 28-30. You can also come on Aug. 31 between 9 a.m. and 3 p.m.

**28 New Art Show** -- "Violence Against Women, Women Against Violence." This Northern California Women's Caucus for Art theme show is ongoing and has been seen at many different venues. At each place, more artists join and new submissions are added. It will be displayed in the Louie Meager Art Gallery and can be seen Mon. - Fri. Noon - 3 p.m., and Wed. evenings by appointment. The show ends on Oct. 10, admission is free.

**31 Men's Soccer** -- 3 p.m. vs. Cosumnes River College here at Ohlone.

## September

**1 Last Day to Add Without Signature** -- all day. Last day to add semester-length classes without instructor's signature.

**1 Women's Soccer** -- 1 p.m. vs. Bakersfield College here at Ohlone.

**2-4 Labor Day Weekend** -- holiday break. No classes.

**5 Last Day for Refund** -- all day. Last day to drop classes and be eligible for a refund.

**5 Women's Soccer** -- 2 p.m. vs. Skyline College here at Ohlone.

**5 Men's Soccer** -- 4 p.m. vs. Fresno City College here at Ohlone.

**8 Men's Soccer** -- 4 p.m. vs. City College of San Francisco here at Ohlone.

**9 Ohlone College Super Flea Market** -- 8 a.m. to 3 p.m. held in parking lots E and H. Parking is \$2 per vehicle and admission is free. Flea market includes many vendors selling a variety of products such as jewelry, tools, household supplies, gift items, cosmetics, collectibles and much more.

**10 Last Day to Add Classes** -- all day. Last day to add semester length classes with instructor's signature.

**10 Last Day to Drop Without "W"** -- all day. Last day to drop semester length classes without receiving a "W" grade.

**14 Women's Water Polo** -- 3:30 p.m. vs. San Joaquin Delta College here at Ohlone.

**15 Men's Soccer** -- 4 p.m. vs. Mission College here at Ohlone.

**16 Step back into the 1940's** -- "Tracks to the past," from 10 a.m. - 6 p.m., in Sunol. Step back in time as the 1940's era comes alive. Day includes Scenic Niles Canyon Railway train ride, vintage cars on display, music entertainment, food and more. Admission to the park is free.

**18 Annual Golf Tournament** -- celebrating Ohlone's 40th anniversary. Proceeds will benefit the Ohlone athletics program. Registration begins at 11 a.m. Tee-off stars at 12:15 p.m. Registration fee is \$225 for each individual or \$900 for a golf foursome. Registration includes green fees, cart, lunch, dinner, awards and prizes. Tournament located at 707 Country Club Circle, Pleasanton. Call (925) 846-2871 for more information.

**19 Transfer Day** -- 10 a.m. to 1 p.m. in lobby of Building 1. This is an opportunity for students to visit with representatives from 4-year colleges and universities, and learn more about the options available. This event is free.

**20 Men's Soccer** -- 4 p.m. vs. Yuba College here at Ohlone.

**22 Last Day to Petition to Complete Classes** -- all day. Last day to petition to complete classes on credit/no credit basis.

**29 Women's Water Polo** -- 2 p.m. vs. Sacramento City College here at Ohlone.


**26 World Forum** -- Noon - 2 p.m., in the Smith Center. Special speaker El Lic. Maria y Compos, will talk about immigration and U.S./Mexico Relations. He has been in government service since 1985 in Mexico over Foreign Relations. He is currently Consul General of Mexico in San Francisco. This event is free.

**Hospitality STAFF** - Experienced part time waitstaff, bartenders & cooks wanted in the East Bay & South Bay. Flexible schedule. Interesting work. Great locations. Won't interfere with your study time! Email: Steelec@partystaff.com or call Steele at (925) 746-0506



**Earn MONEY** -- Earn \$800-\$3200 monthly to drive cars with ads placed on them. [www.DriveAd-Cars.com](http://www.DriveAd-Cars.com).

**HAPPY FISH Swim School** -- Seeking smart, friendly swim instructors to work with children & adults. Indoor heated pool open 7 days a week. Pays \$9.00/hr-\$12.00/hr DOE. Part Time Availability, Fun Environment, & Friendly People. Flexible/Steady schedule works well with school schedule. Print application at [www.SwimHappyFish.com](http://www.SwimHappyFish.com).

## CLASSIFIEDS



**Exercise Your Body, Exercise Your Mind!**

**ALL THE AMENITIES OF A PROFESSIONAL GYM AT A FRACTION OF THE COST.**

Jumpstart your workout with Core Conditioning, Power Cardio, Lower Body Blast or Armed & Dangerous.

TOTAL FITNESS	PE-344A3	(1.0 Unit)	Fall Semester
TOTAL FITNESS	PE-344A2	(0.5 Unit)	Fall Semester
TOTAL FITNESS	PE-344A2-11	(0.5 Unit)	8-28 to 10-20
TOTAL FITNESS	PE-342A2-12	(0.5 Unit)	10-23 to 12-15

**Fall 2006 Fitness Center Hours**

M, W	8:00 am - 3:15 pm, 4:00 pm - 7:10 pm
T, Th	6:45 am - 3:15 pm, 4:00 pm - 7:00 pm
Friday	8:00 am - 3:15 pm
Saturday	9:00 am - 12:00 noon
Sunday	CLOSED

**Call us at 510-659-6044 or visit our website: [www.ohlone.edu/go/fitnesscenter](http://www.ohlone.edu/go/fitnesscenter)**

**Register online using WebAdvisor: [www.ohlone.edu](http://www.ohlone.edu)**

**MISSION PIZZA & PUB**

1572 Washington Blvd.  
Fremont  
Ohlone Village Center  
**651-6858**

**DOUBLE COUPONS DAYS SUNDAY THROUGH TUESDAY**

**\$3 OFF**

**ANY LARGE PIZZA**

Good for up to 4 Pizzas

**SAVE \$6-\$9-\$12**

With coupon. Not valid with other offers.

**\$2 OFF**

**ANY MEDIUM PIZZA**

Good for up to 4 Pizzas

**SAVE \$4-\$6-\$8**

With coupon. Not valid with other offers.

**\$1 OFF**

**ANY SMALL PIZZA**

Good for up to 4 Pizzas

**SAVE \$2-\$3-\$4**

With coupon. Not valid with other offers.

**FREE SMALL PIZZA**

Buy A Large Pizza And Get A Small Pizza FREE.  
Equal Toppings Or Less.

Not valid for double coupon.

**LIVE MUSIC FRIDAY AND SATURDAY NIGHTS**

**32 Micro Brew and Import Beers on Tap!**

www.valpak.com There are more savings online for you™      ©Valpak®, 7/2005.      Advertise with Valpak Bay Area, Inc., (925) 254-9636 358302.3846

**Read the Monitor Online at <http://ohlone.edu/org/monitor>**

The Monitor invites your comments. Letters should be 250 words or less and include your name and relationship to Ohlone. Letters become property of The Monitor and may be edited for spelling and length. Campus Events listings are free for college-related events. To have your event added or to place an ad, contact Danelle Meyer at (510) 659-6075 or e-mail [monitorads@ohlone.edu](mailto:monitorads@ohlone.edu)



The Ballet Folklórico will open the fall season of performances at the Smith Center for the Fine and Performing Arts on Sept. 16.

## Ballet Folklórico opens season at Smith

By MICHAEL ABURAS  
Staff writer

Highlights of this fall's concert season at the Smith Center will include:

- Dancers from Shanghai, reflecting Ohlone's growing cultural exchange with China, Nov. 16-17.

- President Doug Treadway will lend his voice to the Ohlone Chamber Singers when they sing Mozart's Requiem Oct. 21.

- And as part of Ohlone's continuing outreach to the Latino community, the Ballet Folklórico Mexicano will perform Sept. 16.

The Shanghai Dancers will be performing for the first time at Ohlone as a result of a trip to China last May/June by members of the



The Ohlone Chamber Singers will perform Mozart's Requiem on Oct. 21.

Associated Students of Ohlone College. While in China, the ASOC was invited to watch the dancers perform, and later, during rehearsal, the Ohlone students were invited to join in with the dance troupe.

The Shanghai Dancers are professional level dancers from China's top dance school, the Shanghai Dance Academy. They will be

## Romeo, Juliet with modern-day twist

By JESSICA LOSEE  
Staff writer

This fall, the Ohlone Theatre will present the classic Shakespeare play *Romeo and Juliet*, with a not-so-classic twist.

The play begins in a classroom with students who are studying the play, "when a fight breaks out between rival gangs" said Tom Blank, Ohlone theater instructor and director of the play. It is from these gangs that the Montagues and Capulets are formed and the play ensues. The production is set to be just an hour long, so that students in real classrooms can watch it during class.

The production will first be performed in several local high school classrooms and then at the Jackson Theater Nov. 2-4.

Students can audition on Tuesday and Thursday, Aug. 29 and 31 from 8 a.m. to 8:30 p.m. in the NUMMI Theater in the Smith Center. For more information, contact Blank at (510) 659-6209.

## Tuition reduction

*Continued from Page One*  
while schools in California have lost students. In regard to the current semester, Walston said, "The last few days have seen an increase in enrollment over last years numbers but the numbers are going to fluctuate".

During a talk with faculty and staff on Friday, Ohlone President Doug Treadway also noted that enrolment was higher than before. He also commented on the new budget, calling it "one of the best ones in recent memory." Of the lower tuition cost, he said it, "may give us a needed boost in enrollment."

The increase in funding and the lower tuition are gratifying to many according to Baker. She said,

"There where a lot of folks fighting to lower tuition cost to no avail until recently." Baker attributes what she called "a change in the state government's priorities" to "new legislators with new focuses."

Baker also said that new measures are being proposed to continue lowering tuition at community colleges.

The Community College Governance, Funding Stabilization, and Student Fee Reduction Act proposed by Community College League of California Vice President Scott Lay and FACCC President Dennis Smith is being prepared for the Nov. 8 ballot and would reduce tuition to \$15 per unit.

performing modern and traditional Chinese dance.

Dr. Treadway's performance will be part of a worldwide celebration of the 250th anniversary of Mozart's birth.

The Ohlone Chamber Singers 7th Annual Masterworks Program, conducted by Dennis Keller, will celebrate by performing Mozart's Requiem. Treadway, as well as a professional orchestra, will join the choir.

Also, from New Orleans, the Dukes of Dixieland will perform for the first time at Ohlone, Dec. 15, just in time to showcase their

Dixieland jazz interpretations of classic Christmas songs.

Student and community performances for fall will include:

- The Fremont Symphony, Sept. 23, 8 p.m.

- Ohlone Chamber Orchestra Oct. 22, 2 p.m.

- This year's student play will be *Romeo & Juliet*, Nov. 2-4, 8 p.m.

- Bliss Dance Company, Nov. 9-11, 8 p.m.

- Fremont Symphony: Nutcracker, Dec. 2-3, 2 & 7 p.m.

To purchase tickets, go to [www.smithcenterpresents.com](http://www.smithcenterpresents.com) or call the Smith Center at (510) 659-6031.

## Newark

*Continued from Page One*  
projects with, originally, \$97 million going to the Newark Center, \$35 million allocated to the new Student Support Services Center in place of Building 7 and \$15 million toward renovation of the Fremont campus.

The budgets have varied since the initial proposal, with the growing demand for steel and labor driving up prices and adjustments to designs compensating for changes in the Newark Center's planned architecture due to other developers' pulling out of the project. The Board has recently approved a \$3 million increase in the Student Services Building budget with the Fremont campus classroom refurbishment project reduced by the same.

As work on the Newark center progresses, the Building 7 demolition is being delayed. According to Office of College Relations Director Patrice Birkedahl, Building 7 is not slated for demolition until at least December, due in part to the discovery of foundation issues that will make it necessary to level the old framework and begin assembling the Student Services building on the spot simultaneously.

As Trustees need to approve each part of the design before it is implemented, a firm starting date for the work has not been set. There are plans to remove some asbestos from the building before demolition.

## Overload

*Continued from Page 2*  
worked non-stop for five days, allowing just six hours for sleep and three hours for rest/social activity a day.

I got through it with a semester GPA of 3.885, but I lost four months of my life to a smelly, sleep deprived, self-inflicted hell. So, unless you have a harem that shaves and bathes you, lack the need to sleep and have no friends, please don't take an overload.

# GET INVOLVED!

Learn how to write · Get the story behind the news  
Get hands-on media experience · AND MORE!

Register for JOUR 170 to work on the  
Ohlone College Monitor staff.

Needed: Writers · Editors · Photographers ·  
Cartoonists · Graphic Artists · Website Editors  
Call (510) 659-6074 or drop by Room 5310.



# SIGN UP NOW!