

# TRANSFER DAY

TUESDAY, SEPTEMBER 19, 2006

INFORMATION FAIR: 10am-1pm, Building 1 Lobby  
UNIVERSITY PANEL: 2pm-3pm, Room 7102

BROUGHT TO YOU BY THE TRANSFER CENTER, ASOC AND THE OHLONE COLLEGE FOUNDATION



Meet with  
**over 30**  
representatives from

**UCs, CSUs  
& Private  
Universities**

A World of Cultures  
United in Learning



View the list of participating schools at:

[www.ohlone.edu/org/transferday](http://www.ohlone.edu/org/transferday)

## Use drugs, lose aid

*Continued from Page 2*

a profit on a market whose revenue would otherwise have gone unchecked into the hands of drug-dealing private citizens. This money could then be aimed toward rehabilitation clinics, treatments for drug addiction, drug awareness programs and drug education in schools. The drugs sold would also be safer to use, as opposed to the unreliable variability in the safety and quality of the drugs sold by private dealers, which is a considerable concern as many drug-related deaths are due to drug poisoning and improperly refined narcotics. The end result would be a greater societal awareness of the negative effects of using drugs, safer drug use, an in-check, government-regulated market of drugs, more drug users committing themselves to rehabilitation clinics, a decrease in private drug dealing and drug-smuggling, and an overall decrease in the societal demand for drugs in the first place.

Personally, I find this to be the sole effective course of action federal law could and should take. But cracking down on drug-using students, thus depriving them of their student status is simply ridiculous. Take away all of our drug users, and we've got a bland society with half the population it was. Without a president.

## To lease or not to?

*Continued from Page 1*

with the atmosphere of the Mission San Jose District by adhering to historical standards. However, even with Sobrato's compliance to local standards, City Councilman Dominic Dutra stated that it could take up to two years before ground breaking could commence due to city regulations. The frontage property lease is expected to bring in approximately \$2 million in annual revenue, about 4.5 percent of Ohlone's current budget.

The current budget as presented to both the Council and the Board has not taken these funds into account, as they are not likely to be available until 2008. However, frontage lease funds notwithstanding, the Ohlone budget has been well managed. With a total of \$1 million in unallocated savings in the past fiscal year and current year funding amounting to \$2.4 million dollars, the college has achieved a total of approximately \$3.0 million dollars in unallocated funds. This surplus is due in part to savings achieved over the 2005-2006 fiscal year. While these savings were not actively sought, open positions re-

mained unfilled, thereby decreasing the amount of paid salary. Furthermore, faculty and staff both made conscious efforts to reduce waste.

The budget also took into account changes within the school itself. Ohlone has met several goals over the past year, including the reduction of the 18-week semester to a 16-week one. There is also a projected 4 percent increase in enrollment. The reduced semester, improved programs and soon-to-be renovated facilities have had its intended pull over prospective students.

The Board went on to hear both the Sobrato presentation and the budget presentation Wednesday night and proceeded to discuss the replacement of Building Seven with the Student Services Building. Trustee John Weed was not in favor of moving forward with Building Seven demolition, calling such an act imprudent and irresponsible. Weed was of the firm opinion that demolition of serviceable buildings should not be undertaken before a permanent contract is in place. However, Weed appeared to be in the minority and plans should move forward.

## Ohlone in danger

*Continued from Page 1*

deaths in Hayward. This small number seemed almost reassuring until Newton explained that the total population of the area was around 500. The last estimate of Fremont's population was 210,158 and, at the same casualty rate that Hayward experienced, around 2,100 lives could be lost locally in such a quake.

While Ohlone's main campus fares relatively well compared to the lower-lying areas of Fremont, the site "is still on the corner of bad and worse", Newton explained.

After showing a map of the areas in Fremont color-coded by how vulnerable they are to damage during a quake, on which there was no actual safe area, Newton pointed to the campus, outside the worse areas but still well within the disaster-prone area.

The one main advantage Ohlone has during a quake is that it is in the hills. Many areas of Fremont

are located on wet-lands which may become unstable during an earthquake. In addition to feeling the effects of a quake more intensely, these areas may experience liquefaction, a phenomenon which causes the ground to act like a liquid and cause buildings above to sink into the earth.

Ohlone also fared relatively well in regards to the possibility of flood and mudslides while the rest of Fremont may not be so lucky. Newton indicated that most of the possible mudslides in the area would not head in Ohlone's direction.

Newton encouraged those interested in the Hayward fault to visit the Fremont Earthquake Exhibit at Fremont Central Park where a 15 foot trench has been dug, exposing the fault for viewing. The exhibit is open every Saturday, Sunday and last Friday of each month from 10 a.m. to 3 p.m. The exhibit is set to close on Oct. 30, 2006.

## More students enroll

*Continued from Page 1*

previous year's total. Last year, the college borrowed some enrollment from the summer to reach their target, meaning that Ohlone was "in the hole" before the fall semester even began. With the increased enrollment, the college should be able to make up the difference and reach the targets.

Travenick and Treadway are doing everything they can to keep the enrollment up in the following semesters. Both plan to look into further the demographics of the new arrivals, as well as their reasons for coming.

"We're on the move," said Treadway. "And people like to be in a place that's on the move."

## Administrations in conflict

*Continued from Page 1*

key issue in the upcoming November Board of Trustees election.

A comment made in The Tri-City Voice by Board President Bob Brunton served to catalyze the debate of Treadway's impending retirement. In an interview, Brunton said, "My perspective is long term for Ohlone, while Treadway may be looking at things differently since his 5-year contract ends June 30, 2008 (and) has not been extended."

Treadway has taken offense at the statement made by Brunton.

Brunton stated, "It's a point of fact that his contract hasn't been extended. The Board hasn't made a decision to extend it or to not extend it...

it's really a joint decision. [Treadway] has to want the position as well."

However, Treadway hasn't decided whether he wants his contract renewed. "Two years is a long time," Treadway said.

Treadway has made numerous contributions to Ohlone, including the move to implement the new L.E.E.D. standards and improve current buildings.

Brunton has expressed his approval of Treadway's work, stating that Treadway has done an "outstanding job."

Treadway maintained that Brunton has been publicly critical of Treadway's administration in two recent news articles, claiming that Brunton referred to the college president as a "highjacker."

## Deaf Space



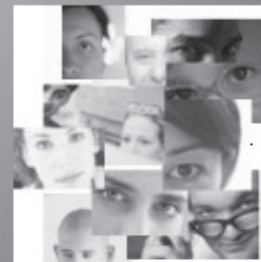
How deaf people see the world



"case of communication and interaction"

"Visu-centric"

"Visual freedom"



"Center around the eyes"

**MJ Bienvenu, Ph.D.**

Chair/Assistant Professor, ASL & Deaf Studies at Gallaudet University

Thursday, September 28, 2006

1:30pm-3:30pm

NUMMI Theatre, Smith Center

Open to Ohlone College students, faculty and staff

Presentation in ASL; English interpretation provided.



Sponsored by  
Gallaudet University Regional Center at Ohlone College  
&  
Ohlone College Center for Deaf Studies

A World of Cultures  
United in Learning

