



Associated Collegiate Press /  
National Scholastic Press Association  
All American  
1984 1985 1986  
1987 1988 1989  
1990 1991 1992  
Regional Pacemaker  
1988  
Journalism Association  
of Community Colleges  
General Excellence  
Fall 1994  
General Excellence  
Fall 2000  
General Excellence  
Fall 2004  
General Excellence  
Fall 2005

**Editor in chief:** Eric Dorman  
**News editor:** Jake Benson  
**Opinion editor:** Noah Levin  
**Features editor:** Nicole Johnson  
**Sports editor:** Jeff Weisinger  
**Photo editor:** Japneet Kaur  
**Online editor:** Suchi Gupta  
**Staff writers:** Ankita Chhabra,  
Theodore Harrison III, Esmeralda Leon,  
Alex Lykins, Nazia Mastan, Sean Nero,  
Tomás Ortega, Anna Biaritz Roldan,  
Devery Sheffer, Zunera Syed, Farnoosh  
Vahedi, Isaac West  
**Photographers:** Anna Alfafara,  
Jorge Gomez, Tara Lynn Lanning, Dan Yuan  
**Ad manager:** Jacque Orvis  
**Ad staff:** Inez Black,  
Christ Marovich, Harpreet Singh  
**Adviser:** Bill Parks  
**Printer:** F-P Press

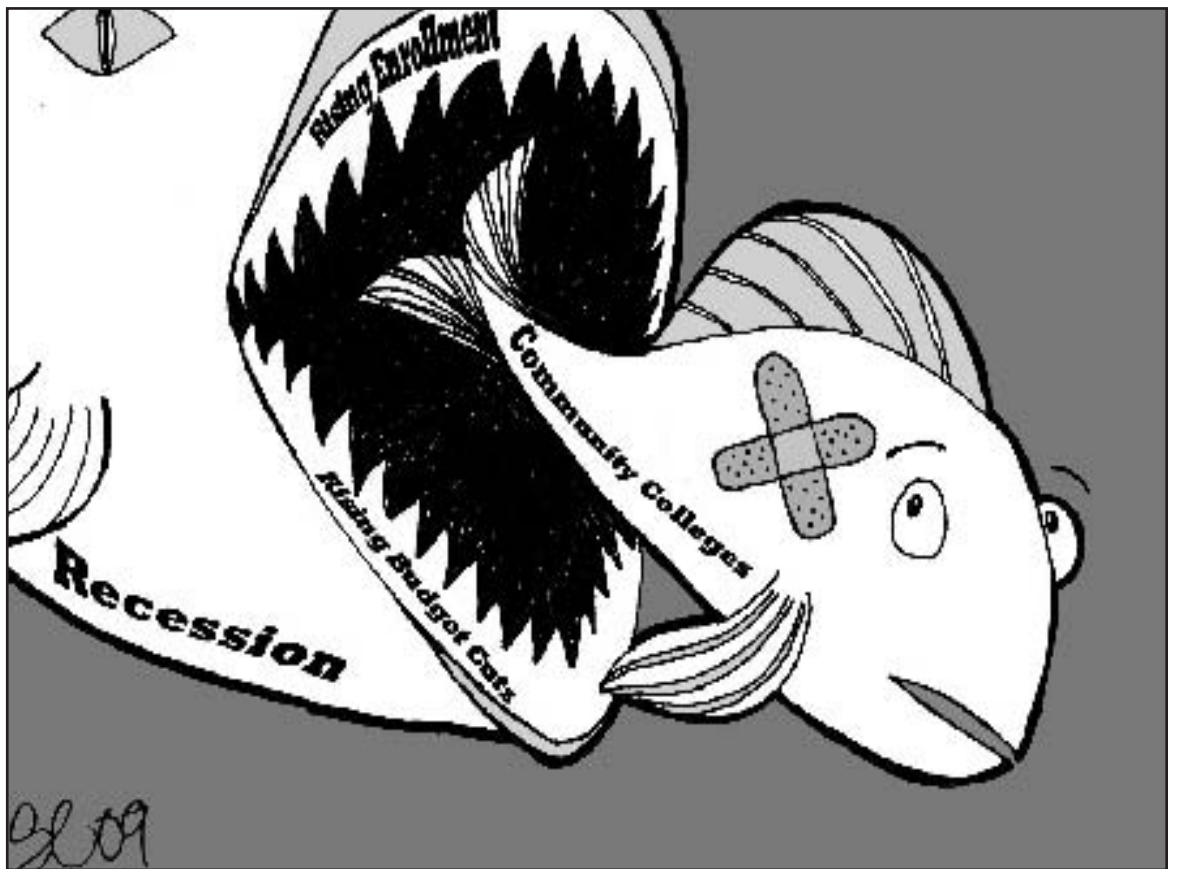


Offices are located in Room 5310 on campus, 43600 Mission Blvd., Fremont 94539-5884. Call (510) 659-6075. Fax: (510) 659-6076. E-mail: monitor@ohlone.cc.ca.us

Opinions expressed in the *MONITOR* are those of the respective authors and are not necessarily those of the staff, the college or the Associated Students of Ohlone College. Unsigned editorials reflect the majority view of staff members. Advertising material is printed herein for informational purposes and is not to be construed as an expression of endorsement or verification of such commercial ventures by the staff or college.

The *MONITOR* is funded by the district, by the Associated Students of Ohlone College, and through advertising revenue.

The *MONITOR* is a member of the Associated Collegiate Press, Journalism Association of Community Colleges, Community College Journalism Association, California Newspaper Publishers Association, College Media Advisers and Society of Newspaper Design.



## OPINION

# Rihanna's abuse means more than tabloid covers

By **DEVERY SHEFFER**  
Staff writer

Less than two months ago, pop singer Robyn "Rihanna" Fenty spent the night in a hospital for serious injuries incurred from her long time boyfriend and fellow pop singer, Chris Brown. According to the *Los Angeles Times* on Monday, Brown pleaded not guilty to his two felony charges for assault and criminal threats. Assuming that he is guilty, this shows his unwillingness to take responsibility for his actions.

This story holds more weight than your typical front-page tabloid about celebrity scandal. The 20-

year-old Rihanna was physically beaten by some one she had been dating for several months.

Though the stories of why and what exactly happened vary from source to source, the fact is this young girl was badly injured. What is even sadder is that this happens to young girls in dating relationships more often than you might think.

Abuse, whether it is physical or otherwise, is unacceptable. Many people may not realize that abuse can occur within relationships other than marriages. High school and college students are at just as much risk of being abused by their partners.

According to the National Cen-

ter for Injury Prevention Control, one in four adolescents report some form of abuse from a partner, including physical, sexual, emotional or verbal. One out of 11 adolescents reports specifically physical abuse from a partner, like that of Rihanna.

This type of behavior can have serious repercussions, including trips to emergency rooms and suicide attempts.

However, these statistics can vary wildly from source to source. This is because much of the abuse that occurs goes unreported. Victims may be too scared to tell anyone, feeling ashamed of themselves and fearing retaliation from

their abusers.

It is hard to understand why anyone who is being abused would stay in a relationship with the abuser, but there seem to be several reasons. Financial dependence on the abuser, fear of isolation from friends and family and self loathing are chief causes.

To recognize if a friend or loved one is being physically attacked or emotionally abused by a partner, there are many signs to watch for.

The victim is often bruised and has inconsistent or vague reasoning for their injuries. They may begin to abuse alcohol or drugs. A partner who is controlling and constantly making their partner feel bad about

themselves is also a form of verbal abuse.

A study conducted by the New York Health Department showed a growing trend in dating abuse involving adolescents over the past decade.

It is easy for victims to mistake outrageous, controlling behavior as a sign of love. Some even relish the negative attention because they feel that this person cares deeply about them.

There are countless resources out there for victims of abuse to turn to. Anyone who feels that they need help can seek counsel in the Ohlone Health Center or look on the Internet for help hotlines.

# Times call for smarter spending, fewer bailouts

By **NOAH LEVIN**  
Opinion editor

I believe environment is one of the essential, major factors that influence the formation and patterns evident in any given culture. This is largely apparent in our own culture. Our nation was founded around a group of colonies, most of which were started as business enterprises.

When America's independence was secured, the ideals of free-flowing capitalism endured, and our forefathers imbued our society with

a "go-get-'em," dollar-chasing attitude. As a consequence, our society is preoccupied with the acquisition and collection of material goods, causing many of the greater issues in our lives and in the world to be overlooked.

Despite a roaring, raging recession that grips our entire country and much of the world, our culture dictates that rather than practice frugality, shoppers should storm the nearest Best Buy when a sale arrives. It seems to me that people would sooner spend frivolously on accessories for pets and cars than agreeing to pay higher taxes to sup-

port more social programs. When one envisions the pursuit of the American dream, it roughly translates into working to earn enough money to buy more, nicer stuff.

Even in the hardest of times, it often seems that some Americans will live paycheck to paycheck, each week spending hard-earned money on meals eaten out, on a new pair of shoes or on a round of drinks at the bar. Not all Americans are guilty of foolish financing, but it seems that if our attitudes toward consumerism and money management had contained more forethought, the mess we are in now

might not be as messy. And though our economy is reliant on spending to keep up the cycle of supply and demand, it seems to me that it would personally be more prudent of us to be saving, not recklessly spending, our wages and tax dollars.

The fact that two federal recovery packages have been passed and dolled out to the car companies, mortgage lenders and banks to no avail, says a great deal about our government's approach to this situation. As with its constituents, the government seems to be overspending in a time when money is in short supply. Our own state government

has made massive cuts to education, and despite cries of protest, this in the long run is meant to stabilize and balance the state budget. The federal government would be wise to follow suit, though not necessarily by cutting educational funding.

Cutting military spending and better controlling where federal bailout money goes are two ways for the government to stem the economic tide, if only a small amount. Much like we ought to do, the economic crisis might be better dealt with through smarter money management and organization, not more frivolous spending.

## CAMPUS COMMENT >>>

# What animal would you be and why?



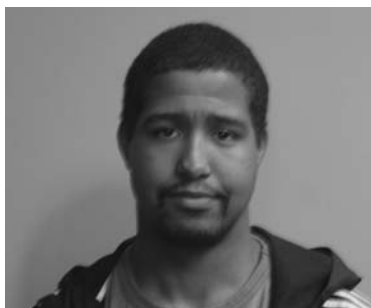
**Audrey Harris**  
BIOLOGY

"I'd be a butterfly so I could fly to Mexico for the winter."



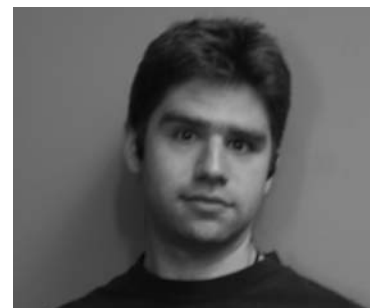
**Lael Erskine**  
GRAPHIC DESIGN

"It would be sweet to be someone's dog. They have it easy."



**Jeremy Leonard**  
MUSIC

"I would be a tiger. I've always liked them."



**Charlie Olson**  
PHYSICAL THERAPY

"I'd be a wolf. I'm kind of a wolf myself."



**Chris Brookens**  
GRAPHIC DESIGN

"It'd be cool to be a Jewel Wasp."