



FOOD
DNA

By ASHLEY
MCKENZIE
Food Columnist

I have to confess, when I was told there is a newly opened Café in Newark that I should go check out, I was very skeptical. It was in a weird location, and I thought the name sounded strange: Cyclo Café. But, true to my word, I went to the Café and found myself pleasantly surprised.

Cyclo Café houses plush, inviting couches and shays. The walls are adorned with faux bamboo, to give the customer feelings of being outside; even the tables and chairs are parts of outdoor furniture. Cyclo offers free wi-fi to its customers, as well as a flat screen with surround sound to keep their customers entertained. They're even set up for an open mic night, which happens every Thursday from 7 to 9 p.m.

My favorite part of the Café, of course, is the cuisine. Cyclo Café offers regular drinks like macchiatos, cappuccinos and mochas, but they also serve a variety of hot, delicious beverages that are uncommon and unexpected, but in a good way.

There are two drinks that stood out to me at Cyclo, and consequently have become my favorites: the Dark Voodoo and the Valentine Rose.

The Dark Voodoo completely lives up to his name it is dark and complex. The drink consists of dark chocolate, espresso, and three different kinds of milk. It adds a little sweetness and a new layer of flavor.

My favorite drink however, I love not only for its flavor, but its presentation. I believe that food should look as good as it tastes, and presentation is vital because it builds up the eater's anticipation of their first bite, or in this case, first sip.

The presentation of the Valentine Rose tea is absolutely incredible. You are served a small tray holding a tiny glass cup and saucer, a wooden stirrer that has sugar crystals on the end and a small pitcher with what looks like a ball of leaves floating in hot water.

As you watch your leafy ball, you come to find it expanding and blooming into a gorgeous, fragrant flower that makes your tea look and smell amazing. The tea itself is light and pleasing, the rose flavor isn't overpowering at all and it tantalizes you with its whisper of flavor.

I found Cyclo at 6063 Stevenson Blvd. to be an inviting place, perfect for hanging out, studying or just for a cup of coffee. I can see Cyclo attracting a large audience in the near future.

Ohlone not imagining opportunities

By ANIKA DOKES
Staff writer

"NBC Bay Area is putting on a massive food drive on Nov. 21 at all CVS Pharmacy locations. Students can participate and get involved in the food drive," said Joe Nicolls, Associated Students of Ohlone College Senator. Nicolls was part of the Project Imagine Community Service Fair on Tuesday and Wednesday.

This week the Campus Activities Department at the Fremont campus hosted the Annual Project Imagine

Community Service Fair, Oct. 20-21 in Hyman Hall. The fair had an outstanding turnout of students who wanted to be part of a community outreach and get involved in the world around them, having a direct influence on their surroundings.

The Campus Activities Department partnered with NBC Bay Area and Civic Engagement Club to sponsor the event. NBC offers community projects for students to get involved and to become a part of a larger cause. Sulaiman, who has been working for the NBC Bay Area News Station is a part of their Volunteering and Community

Service Department. "I came out to the event on campus because I was looking for students to sign-up for community service, and to help them make their resumes and applications look good for when they transfer to CSUs and UCs." And, "Inform students know about upcoming events that are happening and how they can participate in their community."

The purpose of the Community Fair was to inform students about activities that are being offered and get them involved as well as learn about community service projects and how they can develop leadership

skills and share their experiences with other students who are also interested in civic engagement.

Campus Activities provides educational, cultural and social activities. In addition, they offer practical skills to use in the real world. Development training, leadership activities, interaction with diverse ideas and populations all worked to stimulate critical thinking and problem solving. The Department is led by Director of Campus Activities and EOPS Debbie Trigg, ASOC and ICC Advisor and Renee Wong Gonzales who is also the Campus Activities Coordinator.

Anniversary of Loma Prieta

By NAJIA QADIR
Staff writer

All earthquakes are caused by a sudden shift of rock along a fracture in the earth called the fault line.

The nearest fault line in the Bay Area is the San Andreas Fault.

In 1989 the Loma Prieta Earthquake, also known as the Quake of '89, was an earthquake that caused severe damage in the San Francisco Bay Area on Oct. 17, 1989.

Loma Prieta recorded as 6.9 on the Richter scale. The quake caused 63 deaths, injured over 3,000 and left around 10,000 homeless.

The high number of homes that were damaged as a result of liquefaction. Liquefaction is defined as, "A process by which water-saturated sediment temporarily loses strength

and acts as a fluid."

The foundations on which most buildings in San Francisco were built were unstable and easily surrendered to the great shakes of the earthquake.

Though the earthquake only lasted six or seven seconds, the damage was great and widespread.

This earthquake occurred at a very unique time, for it coincided with the '89 World Series and police believe that the high-traffic areas would have had a higher death toll, had the Series not been running.

Relief groups like the Red Cross and approximately 31,000 volunteers helped the relief effort. Forty-five shelters were established.

The question that persisted after the quake was how safe are we if another earthquake hits. Some

schools, especially in S.F., have been deemed unfit to stand up to an earthquake. Some are still awaiting renovation.

There has been extensive freeway and bridge reconstruction in the 20 years since this earthquake. However, there is still much to be done.

Californians should count themselves lucky that the last 20 years have been practically untouched by any major shake.

If another earthquake does strike California, which is highly likely according to scientists, Ohlone has a preparedness plan that is available on its website. It is important that students and staff alike go over the steps to ensuring a safe, post-earthquake environment here at Ohlone.

The website explains that if one is inside, they should duck under a table or in a corner with one's head pointing downwards, eyes closed with hands cushioning the back of your head to avoid major brain damage and avoid being near heavy equipment. If outside, stay away from electricity poles, buildings and other structures. Aim to turn off gas and electric appliances and if necessary turn on the building alarm systems. Because there are students with various needs, assist those who need aid in case of a major earthquake. Notes can be used to communicate with Ohlone's deaf students.

We are all members of a community and must work together to prevent extensive damage to our structures and student body.

Atelier School of Classical Realism

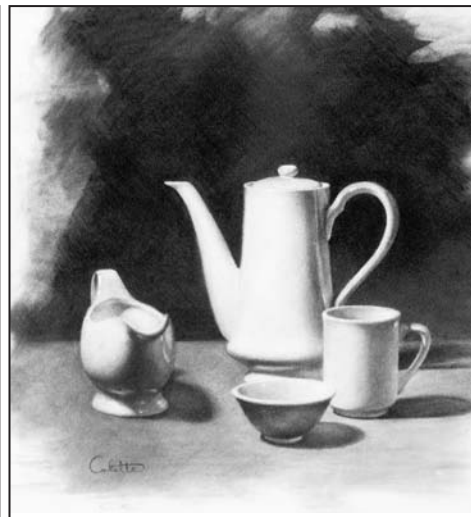
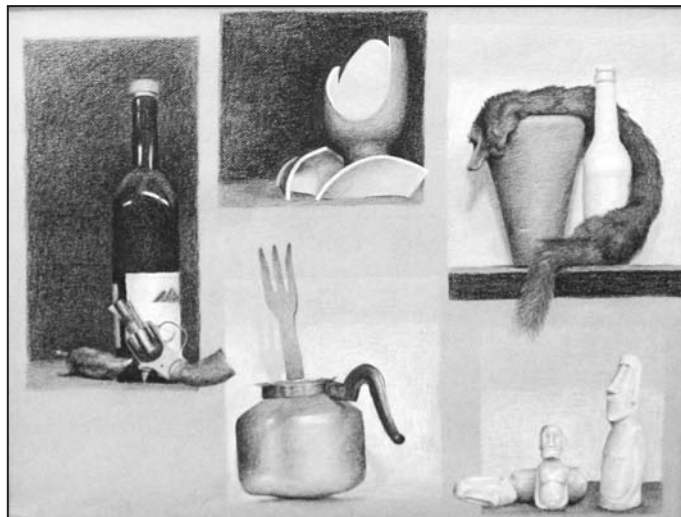
By KATE DIXON
Staff writer

My first impression of these 31 works of art is that they are precise renditions of objects and human beings. They seem too precise to be real—they invite the viewer to reach out and pick up what they depict—the lemons, the boot or books.

Yet they are just paint and graphite on canvas or paper, not living or real or even sculptures in three dimensions. Slices of reality that are perfect and beautiful. No matter what one's philosophy of art or interests, the pure gorgeousness of the works overwhelms at times.

The Atelier exhibit at the Louie Meager Art Gallery features drawings and paintings in the tradition of classical realism.

This is an exhibit of works by the faculty and students of the Atelier School of Classical Realism of Oakland. "Atelier" means a school of a master artist. At the Atelier, David Hardy, Director and Rob Anderson, Instructor, teach the art and techniques of "Classical Realism." Their extension of this school which began in the Renaissance and was



Right, Colette Clark's "Still Life with Coffee" Left, Desry Miller's "Still Life Studies."

revived in the 19th Century.

Notably, Carlos Duran taught John Singer Sargent, the great American portrait painter, at his French Atelier. At an Atelier a student learns one on one with the master artist by drawing and painting objects and live figures, set before the class. The goal is to depict reality with exactitude on two dimensional canvas and paper using techniques to capture volumes, edges and atmosphere.

19th century realism gave way

to modernism and impressionism and many other schools of art. The current exhibit at the Louie Meager Gallery, a journey into the 19th century, or is this a new version of "realism?"

"Moby Dick Ensemble" by Rachel Bridges is a 12" x 18" painting of the Moby Dick laying on its side, spine and title, on top of a book without a title all set on a table. Next to them are six children's blocks spelling F-I-S-H-Y, two plastic goldfish, and a conch shell.

A toy plastic motor boat with a tiny Mickey Mouse piloting it sits atop the books as though sailing them along the table.

Although each grain of the wooden table surface, the pages of the book and the slick surface of the shell are depicted accurately, I took a visual double-take when realizing that the blocks and book are too large to be real. The background is a blue mist. The lettered blocks make a comment, "fishy?" Does it make sense?

Moby Dick is an old book, yet Mickey Mouse in a motor boat is riding it like it is an ocean wave. Is this classical realism? The symbolism of this Moby Dick painting and its witty air can be seen in surreal works such as some of those by Salvador Dali, who also used extremely realistic drawing and painting techniques to depict subject matter which is wildly dreamlike.

Continued on Page 6

Cyclo Cafe 6036 Stevenson Blvd. Fremont (510)249-9999
very near Newark campus!
 Enjoy live music while enjoying a sip or two of award winning coffee and tea.
fine place for homework...
 ...a place you can call your own.
 OHlone+College +I.D.= 15% OFF
 Co-owner & Famous Fashion Designer: Jenny Pham
 OPEN MIC Tues. 7 to 9p.m. Starting Sept. 29
 www.CycloCafe.net



Photos by David Epperson

Left, O'Connell interacts with students during his RSA Encryption Brown Bag Seminar on Monday. Ohlone students learned how to keep their passwords safe using public and private keys. Right, O'Connell after the seminar.

O'Connell offers password safety tips

By KATHERYN DIXON
Staff writer

Jeff O'Connell, Associate Professor of Mathematics, insisted throughout his Science Brown Bag Seminar on Friday that sixth-grade math was sufficient to grasp RSA encryption so as to enable someone to keep their Facebook password safe.

O'Connell must know genius sixth-graders. His one hour Power Point presentation at the Jackson Theatre was organized, effective and did reach out to the mathematically challenged at times, but ultimately, algorithms do not suffer fools kindly.

RSA is an algorithm for public-key cryptography which is used widely in electronic commerce. An algorithm is a method of solving a

problem using a finite sequence of instructions.

O'Connell explained that RSA involves a public key and a private key.

Anyone can encrypt a message using the public key. However, only a private key can decrypt a message. RSA is part of everyday life on the internet.

O'Connell said, "The small letter padlock in the corner of a web browser uses RSA encryption to keep passwords and credit card numbers from being viewed while in transit to their destinations."

First, he showed the audience how to generate the encryption key by first selecting two random prime numbers—"p" and "q."

He then defined "n" which is the modulus for both the public and private keys and is computed

as "n = pq."

He explained that the public key consists of modulus "n" and the public or encryption exponent "e." The private key consists of the modulus "n" and the private decryption exponent "d" which is kept secret.

Using quick multiplication and division requiring a calculator, O'Connell showed how to generate the key, encrypt a message and then decrypt it.

As a grand finale, he asked, "Can this encryption method be cracked? His answer: "Yes. Yes, but virtually impossible."

He showed how to crack it by using factoring very large numbers, but did not do so.

He said, "Factoring humongous numbers is hard...It would take 70 years to break one cipher with all

the computers in the world."

RSA was developed in 1978 by Ron Rivest, Adi Shamir and Leonard Adleman at MIT.

MIT obtained a U.S. patent for RSA but released it into the public domain in 2002.

Finally, O'Connell showed the packed audience of about 300 students an excerpt of an Abbott and Costello film, "In the Navy" in which Lou Costello playing a Navy chef, explains his nonsensical mathematics formula on a blackboard over and over until it seems to make hilarious sense.

O'Connell said his next Brown Bag will be entitled "Math in the Movies and TV, Part 2, a Sequel."

For review, O'Connell has provided a copy of the presentation online @ <http://www2.ohlone.edu/people2/joconnell/>



Bits of Girl

By IVY MONDRAGON

EDITOR'S NOTE--*This is part of a series about hurtful issues and how to overcome them. It is written by a student who has chosen to remain anonymous.*

I died that day, and it was all my fault. I broke up with him. I had jumped off a sky scraper and hit rock bottom. I couldn't go home, I couldn't stand facing my mom. I didn't want to deal with the questions or my room. I couldn't get away from him and I couldn't get away from myself. I was a prisoner of my own thoughts and needed deliverance.

I called my friend and he came. If it was not for him then I don't know what I would have done. He picked me up in his beloved shiny blue car. I crawled into his car and he didn't say a word. He just knew. I had just met him and he knew something had gone terribly wrong. But we clicked over crazy circumstances. I thanked him and he drove me around until I felt better. I cried and explained the situation to him. He was everything I needed, a friend that knew how to listen. He was perfect and all he had to do was drive.

The twists and turns and the sound of his car were all so comforting, he was comforting. I don't remember what was said that day, or how I got into that situation, everything is hazy. But what I do remember is how it all made me feel, and what my friend did for me. I guess that is the beauty of life, the situation escapes me and the feeling is indescribable so the only way to understand this is if you have lived through it.

I think I saw the carpenter while driving once but I never spoke to him, and my friend and I never got together. I knew it would have been under the worst of situations.

To be continued.

Madeline Wilson, the harpist

By SHELBY LACY
Staff writer

The magnificent instrument began with limestone, gut and bone. It was the first instrument, and makes a classically beautiful sound.

Madeline Wilson is an Ohlone College student and has played the harp since the age of 10, and seven years later, she is still a student of the instrument.

She began to play her first instrument, the clarinet, at the age of 8.

Wilson said "I saw a harpist at the county fair...she was sitting in the art column and I thought it was the most beautiful sound."

Wilson then proceeded to speak

to the harpist and discovered that she taught lessons. She began her lessons a month later. Wilson has an Aoyama Orpheus 47 that she got when she was about 14 all the way from L.A.

The most common and easiest to obtain brands in the U.S., include, Lyon and Healy, Camac, Salvi, and Aoyama. "Most people stick with one of the four since they are the most famous" said Wilson.

It is a \$13,500 student harp. The number after the model number indicates the number of strings on the harp.

A lever harp usually has from 38-44 strings because it can only

raise half a pitch and doesn't go flat, but 46-48 strings is normal for a pedal harp.

On the average harp, the strings are separated into three pieces, the top third is nylon, the middle piece is nylon or sheep gut, and the lower third is made up of coiled wires. She has a special wheeled case to place her harp in as it weighs a good solid 40 pounds. "Its pretty heavy."

Wilson's favorite song to play is "The Little Fountain" composed by Samuel O. Pratt. She loves the harp and is her absolute favorite instrument, but she loves the harp best when it is blended with other instruments.

Although Wilson plays for the

love of the harp, she doesn't plan to turn it in to any type of career.

She has played at a few weddings "I just think that's really flattering," she said, "and the harp goes with weddings, something just feels right about it."

If she would not be playing the harp, she would still be playing the saxophone, yet another complicated

Continued on Page 6



Photo by Nytasia Calip



Photo by Accalia Calip

'Maddy,' practices every day and still has time for school.

TRANSFER CENTER

- YOUR TRANSFER RESOURCE HUB

University Reps Are Coming!

10/26 Grand Canyon University
10am-2pm,
Hyman Hall 2nd Floor Lobby

10/28 San Jose State University
10am-11:20am & 1-2pm
Transfer Center

Attend Transfer Workshops!

10/22 Nursing Careers & Options
Workshop
1:30-2:30pm, Hyman Hall 207

10/22 Writing Your UC Personal
Statement Workshop
1-2pm, Room 6201

10/28 San Jose State University
Admissions Info Session
11:35am-12:35pm, Room 6202

10/28 Transfer Admission Guarantee
1-2pm, Hyman Hall 115

10/29 Admissions Applications Workshop
10:30am-12:30pm, Hyman Hall 113

BUILDING 7
3RD FLOOR
LOBBY

(510) 659-6241
transfer@ohlone.edu

HOME PAGE
www.ohlone.edu/org/transfer

TRANSFER EVENTS
www.ohlone.edu/go/transfercalendar

ONLINE UNIVERSITY
REP APPOINTMENT
SCHEDULING
<https://appointments.ohlone.edu/esars/tcs>