

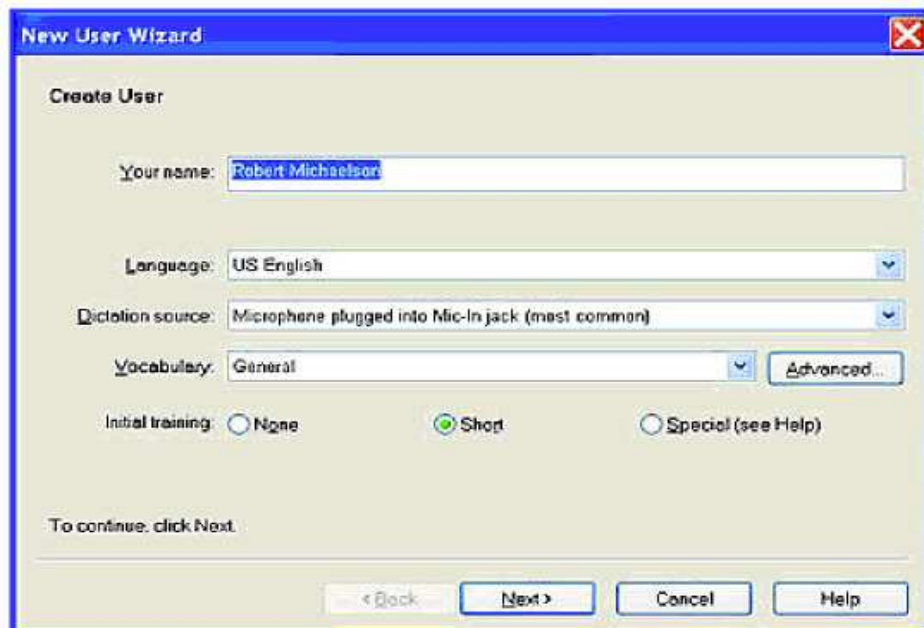
Dragon Naturally Speaking - Quick Guide

Any Questions? LRCe-help@ohlone.edu

Please Note: You must use the same brand & model of headphones each time to maintain the same voice recognition calibrations!

Starting Dragon Naturally Speaking:

- Start Dragon Naturally Speaking by double-clicking the desktop icon.
- Plug the Logitech USB Headset into computer (may be checked-out at Reference Desk)
- Before you can begin using Dragon, you must create a user profile
- In the Open User window, click on New.



To create a user:

- In New User Wizard window, type a name for Your Name. Click Next
- Choose your sound system: Select Logitech USB Headset. Click Next.
- Position your microphone. Follow prompts in window. Click Next.

Check your audio settings:

- Adjust your microphone: Volume Check. Follow prompts. Click Next.
- Adjust your microphone: Quality Check. Follow prompts. Click Next.
- Now you must train DNS to recognize your voice by reading aloud for several minutes.
- When you are ready, click the Go button. A yellow arrow shows you where to start reading. When the words turn a different color, it means the program has heard and recognized them. Click Next and follow the on-screen instructions through several windows.

Adapting to your writing style:

- DNS can analyze your writing style to increase your overall recognition accuracy.
- Adapting to your writing style can add 5 – 30 minutes to user training. This is recommended.
- Follow the prompts.

You are ready to dictate:

- You will now get a message asking if you wish to start the Tutorial or begin dictating.
- It is highly recommended that new users go through the Tutorial for two reasons:
 - It will teach useful commands for easy use of the program
 - It will refine the calibration of your voice to the voice recognition