

ARCC 2008 Report: An Introduction to the Systemwide Indicators

The Accountability Reporting for the Community Colleges (ARCC) framework specifies that community college performance data should be aggregated, analyzed, and reported at two levels: the individual college level (college level indicators) and across the community college system (systemwide indicators).

Tables 1 through 18 and Figures 1 through 6 in the following section of the 2008 ARCC report present results, where available by January 2008, for the seven performance indicators chosen for **systemwide** accountability reporting. These performance indicators are organized into four major categories:

- Student Progress and Achievement – Degree/Certificate/Transfer
- Student Progress and Achievement – Vocational/Occupational/Workforce Development
- Pre-Collegiate Improvement – Basic Skills and ESL
- Participation Rates

The seven performance indicators presented in this section are:

1. The annual number and percentage of baccalaureate students graduating from UC and CSU who attended a California Community College
2. The annual number of Community College transfers to four-year institutions
3. The transfer rate to four-year institutions from the California Community College System
4. The annual number of degrees/certificates conferred by vocational programs
5. The increase in total personal income as a result of receiving a vocational degree/certificate
6. The annual number of basic skills improvements
7. Systemwide participation rates (by selected demographics).

The Data Sources and Methodology for each of the indicators can be found in Appendix B.

The time periods and data sources differ across performance indicators so it is important to pay attention to the dates and information specified in the column headings and titles for each table or figure. Further, these time periods have changed since the 2007 ARCC report, so it is especially important to check the dates for each table or figure.

The presentation of income trend data in this 2008 ARCC report differs from the presentation in the 2007 report, although the data have not changed. We have reformatted the separate pages for figures 6, 7, and 8 from the 2007 report as a single page of figures (Figures 6a, 6b, and 6c) in the 2008 report. This reformatting allows for easier comparison across student cohorts. Wage data for these trend lines are now included as Tables 12a, 12b, and 12c.

An Introduction to the Systemwide Indicators

The wage data presented in Figures 6a to 6c and Tables 12a to 12c are the same data used in the final 2007 ARCC report. Concern about the confidentiality of wage data at the California Employment Development Department (EDD) increased the department's sensitivity to releasing these data. Thus, we were unable to obtain the most recent wage data in time to include them in the 2008 ARCC report. We have worked with the EDD (via legislation) to resolve this issue for future ARCC reports.

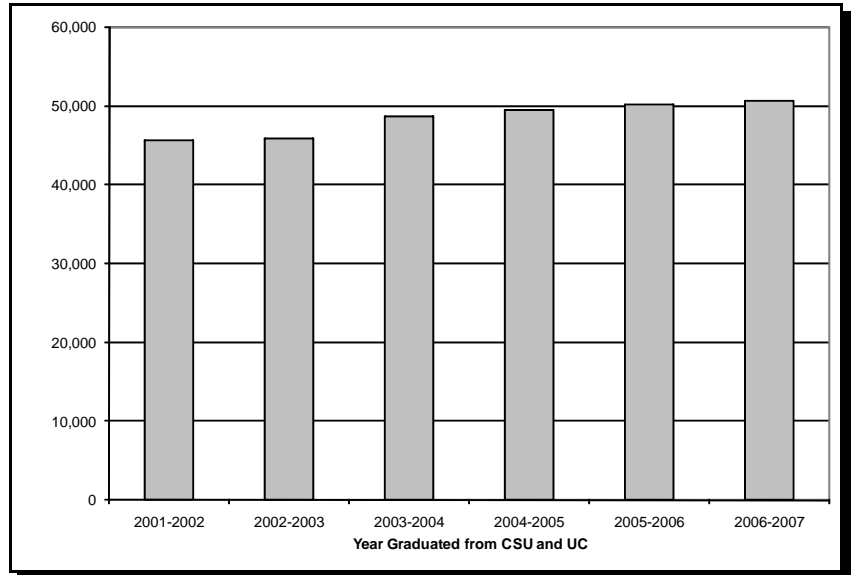
Note that these systemwide indicators are not simply statewide aggregations of the college level indicators presented elsewhere in this report. Some systemwide indicators cannot be broken down to a college level or do not make sense when evaluated on a college level. For example, students may transfer or attend courses across multiple community colleges during their studies and their performance outcomes must be analyzed using data from several community colleges rather than from an individual college.

ARCC 2008 Report: Systemwide Indicators

Student Progress and Achievement: Degree/Certificate/Transfer

Figure 1:

Annual Number of California State University (CSU) and University of California (UC) Baccalaureate Students from 2001-2002 to 2006-2007 Who Attended a California Community College (CCC)



Year Graduated From CSU or UC

Table 1:

Annual Number of California State University (CSU) and University of California (UC) Baccalaureate Students from 2001-2002 to 2006-2007 Who Attended a California Community College (CCC)

	2001-2002	2002-2003	2003-2004	2004-2005	2005-2006	2006-2007
Total BA/BS (CSU & UC)	96,179	98,837	104,320	107,630	110,990	112,464
Total Who Attended CCC	45,641	45,826	48,657	49,439	50,248	50,611
CSU and UC Percent	47.5%	46.4%	46.6%	45.9%	45.3%	45.0%

Year Graduated From CSU

Table 2:

Annual Number and Percentage of CSU Baccalaureate Students from 2001-2002 to 2006-2007 Who Attended a CCC

	2001-2002	2002-2003	2003-2004	2004-2005	2005-2006	2006-2007
Total BA/BS from CSU	61,463	61,712	65,741	66,768	69,350	70,877
Total Who Attended CCC	35,792	35,315	37,329	37,316	38,365	38,827
CSU Percent	58.2%	57.2%	56.8%	55.9%	55.3%	54.8%

Year Graduated From UC

Table 3:

Annual Number and Percentage of UC Baccalaureate Students from 2001-2002 to 2006-2007 Who Attended a CCC

	2001-2002	2002-2003	2003-2004	2004-2005	2005-2006	2006-2007
Total BA/BS from UC	34,716	37,125	38,579	40,862	41,640	41,587
Total Who Attended CCC	9,849	10,511	11,328	12,123	11,883	11,784
UC Percent	28.4%	28.3%	29.4%	29.7%	28.5%	28.3%

Results:

Figure 1 presents an increasing six-year trend of the annual number of California State University (CSU) and University of California (UC) baccalaureate students who attended a California Community College (CCC). Table 1 shows the number of CSU and UC baccalaureate students, and of those, the total who attended a CCC. The table also reflects the percentage of graduates who originally attended a CCC across the six-year period. The percentage slightly decreases over time beginning in 2003-2004. Table 2 displays the annual number and percentage of CSU students and Table 3 portrays the UC students.



ARCC 2008 Report: Systemwide Indicators

Student Progress and Achievement: Degree/Certificate/Transfer

Figure 2:
Annual Number of California Community College
Transfers to Four-Year Institutions
from 2001-2002 to 2006-2007

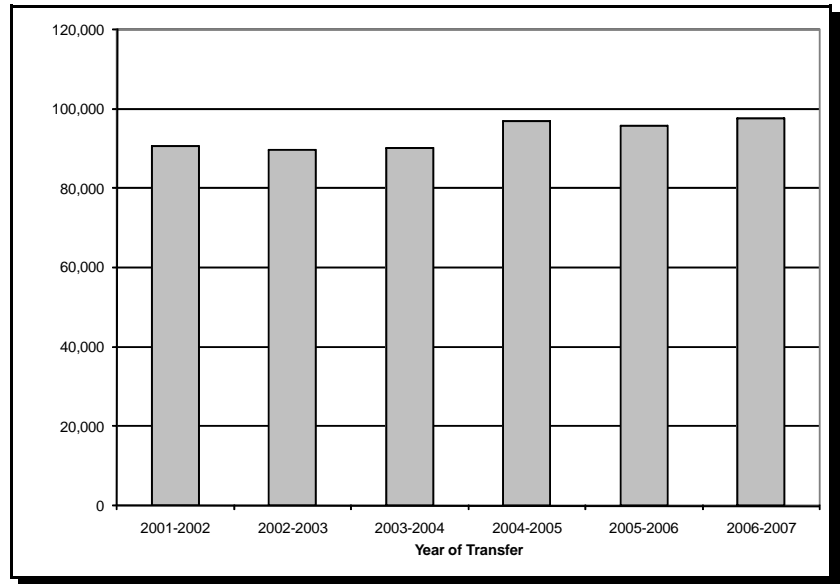


Table 4:
Annual Number of California Community College
Transfers to Four-Year Institutions
from 2001-2002 to 2006-2007

	Year of Transfer					
	2001-2002	2002-2003	2003-2004	2004-2005	2005-2006	2006-2007
Total Transfers	90,596	89,607	90,151	96,980	95,670	98,842

Table 5:
Annual Number of California Community College
Transfers to California State University (CSU),
University of California (UC), In-State Private (ISP) and
Out-of-State (OOS) Four-Year Institutions

	Year of Transfer					
	2001-2002	2002-2003	2003-2004	2004-2005	2005-2006	2006-2007
CSU	50,473	50,746	48,321	53,695	52,642	54,391
UC	12,291	12,780	12,580	13,211	13,462	13,874
ISP	17,070	15,541	18,100	18,365	17,840	18,752
OOS	10,762	10,540	11,150	11,709	11,726	11,825

Results:

Figure 2 and Table 4 feature the annual number of California Community College (CCC) transfers to four-year institutions across six years. Although there is a general increase over time, the overall number of transfers declines in 2002-2003 and 2005-2006. Table 5 displays the annual number of transfers for four segments; California State University (CSU), University of California (UC), In-State Private and Out-of-State (OOS) four-year institutions.

For Methodology and Data Source, see Appendix B.



ARCC 2008 Report: Systemwide Indicators

Student Progress and Achievement: Degree/Certificate/Transfer

Figure 3:
Annual Number of California Community College
Transfers to California State University (CSU)
from 2001-2002 to 2006-2007

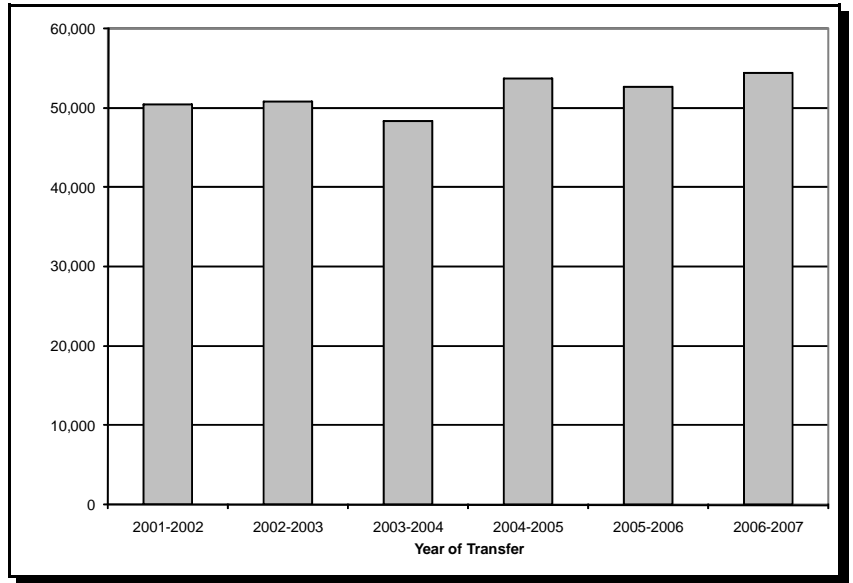


Table 6:
Annual Number of California Community College
Transfers to California State University (CSU)
from 2001-2002 to 2006-2007

	Year of Transfer					
	2001-2002	2002-2003	2003-2004	2004-2005	2005-2006	2006-2007
CSU Transfers	50,473	50,746	48,321	53,695	52,642	54,391

Results:

Figure 3 and Table 6 display the annual number of California Community College (CCC) transfers to California State University (CSU). The number of transfers increases from 2001-2002 to 2002-2003 before decreasing in 2003-2004. A substantial increase of transfers is evident in 2004-2005 followed by a decline in 2005-2006 and an increase in 2006-2007.

For Methodology and Data Source, see Appendix B.



ARCC 2008 Report: Systemwide Indicators

Student Progress and Achievement: Degree/Certificate/Transfer

Figure 4:
Annual Number of California Community College
Transfers to the University of California (UC)
from 2001-2002 to 2006-2007

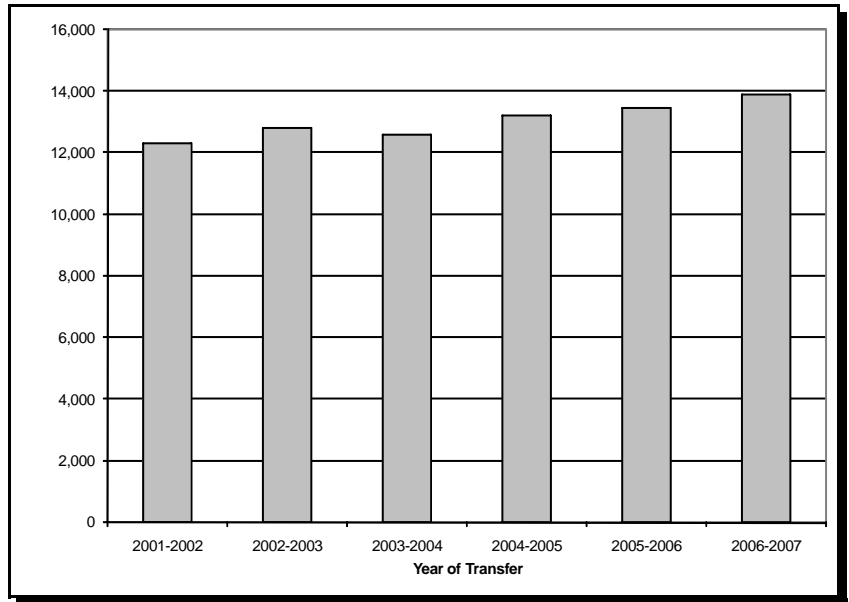


Table 7:
Annual Number of California Community College
Transfers to the University of California (UC)
from 2001-2002 to 2006-2007

	Year of Transfer					
	2001-2002	2002-2003	2003-2004	2004-2005	2005-2006	2006-2007
UC Transfers	12,291	12,780	12,580	13,211	13,462	13,874

Results:

Figure 4 and Table 7 illustrate the annual number of California Community College (CCC) transfers to University of California (UC). With the exception of a slight decrease in 2003-2004, the number of transfers increases from 2004-2005 to 2006-2007.

For Methodology and Data Source, see Appendix B.



ARCC 2008 Report: Systemwide Indicators

Student Progress and Achievement: Degree/Certificate/Transfer

Figure 5:
Annual Number of California Community College Transfers to In-State Private (ISP) and Out-of-State (OOS) Four-Year Institutions from 2001-2002 to 2006-2007

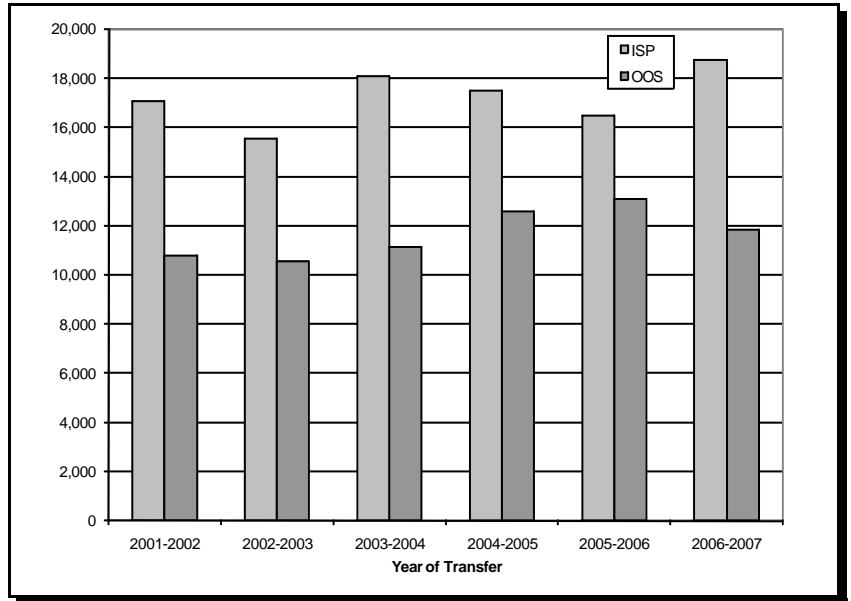


Table 8:
Annual Number of California Community College Transfers to In-State Private (ISP) and Out-of-State (OOS) Four-Year Institutions from 2001-2002 to 2006-2007

	Year of Transfer					
	2001-2002	2002-2003	2003-2004	2004-2005	2005-2006	2006-2007
ISP Transfers	17,070	15,541	18,100	18,365	17,840	18,752
OOS Transfers	10,762	10,540	11,150	11,709	11,726	11,825

Results:

The annual number of California Community College (CCC) transfers to In-State Private (ISP) and Out-of-State (OOS) four-year institutions is displayed in Figure 5 and Table 8. The transfer volume increases for ISP four-year institutions and increases slightly for OOS four-year institutions for the most recent academic year, 2006-2007.

For Methodology and Data Source, see Appendix B.



ARCC 2008 Report: Systemwide Indicators

Student Progress and Achievement: Degree/Certificate/Transfer

Table 9:
Transfer Rate to Four-Year Institutions

Percentage of first-time students with a minimum of 12 units earned who attempted transfer-level Math or English during enrollment who transferred to a four-year institution within six years.

	1999-2000 to 2004-2005	2000-2001 to 2005-2006	2001-2002 to 2006-2007
Transfer Rate	40.2%	39.9%	38.8%

Results:

Table 9 reflects the statewide transfer rate to four-year institutions for three different cohorts of first-time students. The cohorts include students who earned at least 12 units and who attempted transfer-level Math or English during the six-year enrollment period. The transfer rate decreases slightly over time, with the rate of transfer to four-year institutions for the 2001-2002 cohort falling to 38.8%.

For Methodology and Data Source, see Appendix B



ARCC 2008 Report: Systemwide Indicators

Student Progress and Achievement: Vocational / Occupational / Workforce Development

Table 10: Annual Number of Vocational Awards by Program from 2004-2005 to 2006-2007
(Program Title based on four-digit TOP Code, Alphabetical Order)

Includes Certificates Requiring Fewer Than 18 Units

Program Title	Total Credit Awards			AA/AS Degrees			Certificates (Credit)		
	2004-2005	2005-2006	2006-2007	2004-2005	2005-2006	2006-2007	2004-2005	2005-2006	2006-2007
Accounting	2,472	2,501	2,489	1,060	995	1,013	1,412	1,506	1,476
Administration of Justice	5,969	5,629	6,974	1,675	1,736	1,834	4,294	3,893	5,140
Aeronautical and Aviation Technology	353	383	403	61	59	79	292	324	324
Agricultural Power Equipment Technology	33	39	54	4	11	9	29	28	45
Agriculture Business, Sales and Service	71	44	78	65	38	68	6	6	10
Agriculture Technology and Sciences, General	20	36	22	17	17	17	3	19	5
Animal Science	472	502	460	289	317	306	183	185	154
Applied Photography	174	191	179	65	63	65	109	128	114
Architecture and Architectural Technology	263	304	311	115	129	139	148	175	172
Athletic Training and Sports Medicine	20	25	20	14	18	14	6	7	6
Automotive Collision Repair	125	134	133	16	16	11	109	118	122
Automotive Technology	1,906	2,071	2,003	301	300	290	1,605	1,771	1,713
Aviation and Airport Management and Services	168	223	204	112	139	138	56	84	66
Banking and Finance	57	68	65	26	26	34	31	42	31
Biotechnology and Biomedical Technology	132	167	204	38	36	47	94	131	157
Business Administration	2,288	2,419	2,451	1,971	2,129	2,128	317	290	323
Business and Commerce, General	1,303	1,229	1,267	1,068	984	1,097	235	245	170
Business Management	1,446	1,737	2,040	767	920	857	679	817	1,183
Cardiovascular Technician	133	152	152	25	29	49	108	123	103
Chemical Technology	8	15	13	2		4	6	15	9
Child Development/Early Care and Education	7,494	7,943	7,733	1,932	1,926	1,912	5,562	6,017	5,821
Civil and Construction Management Technology	404	416	410	88	82	85	316	334	325
Commercial Art	28	27	44	16	15	30	12	12	14
Commercial Music	257	265	179	44	48	38	213	217	141
Community Health Care Worker	1	2	5				1	2	5
Computer Information Systems	805	612	628	461	409	321	344	203	307
Computer Infrastructure and Support	580	560	527	223	229	171	357	331	356
Computer Software Development	551	347	370	219	133	126	332	214	244
Construction Crafts Technology	870	914	902	85	95	86	785	819	816



ARCC 2008 Report: Systemwide Indicators

Table 10 (continued)

Program Title	Total Credit Awards			AA/AS Degrees			Certificates (Credit)		
	2004-2005	2005-2006	2006-2007	2004-2005	2005-2006	2006-2007	2004-2005	2005-2006	2006-2007
Cosmetology and Barbering	1,409	1,365	1,546	58	71	59	1,351	1,294	1,487
Customer Service			2						2
Dance		2	2					2	2
Dental Occupations	817	833	873	314	336	351	503	497	522
Diagnostic Medical Sonography	52	55	88	9	13	23	43	42	65
Diesel Technology	183	195	178	28	43	35	155	152	143
Digital Media	616	536	602	229	203	233	387	333	369
Drafting Technology	540	579	472	171	190	169	369	389	303
Educational Aide (Teacher Assistant)	45	55	53	18	17	21	27	38	32
Educational Technology		4	2		2	2		2	
Electro-Mechanical Technology	34	33	26	10	6	8	24	27	18
Electro-Neurodiagnostic Technology	1	11	6			5	1	11	1
Electrocardiography	14	23	18				14	23	18
Electronics and Electric Technology	891	991	1,081	314	287	262	577	704	819
Emergency Medical Services	2,310	1,895	1,712	2	2	4	2,308	1,893	1,708
Engineering Technology, General	17	36	20	11	28	14	6	8	6
Environmental Control Technology (HVAC)	359	339	307	57	49	49	302	290	258
Environmental Technology	439	267	238	27	22	24	412	245	214
Family and Consumer Sciences, General	126	108	116	125	108	105	1		11
Family Studies	26	16	13	18	10	9	8	6	4
Fashion	427	422	354	138	135	109	289	287	245
Film Studies	62	123	105	31	72	58	31	51	47
Fire Technology	3,011	2,904	3,367	830	896	905	2,181	2,008	2,462
Food Processing and Related Technologies		64	1		32	1		32	
Forestry	31	48	76	19	27	30	12	21	46
Geography	49	57	56	12	17	14	37	40	42
Gerontology	37	45	46	11	15	16	26	30	30
Graphic Art and Design	404	390	387	167	166	194	237	224	193
Health Information Technology	297	278	323	98	90	102	199	188	221
Health Occupations, General	4	9	30	1	2	6	3	7	24
Health Professions, Transfer Core Curriculum	104	150	196	104	146	189		4	7



ARCC 2008 Report: Systemwide Indicators

Table 10 (continued)

Program Title	Total Credit Awards			AA/AS Degrees			Certificates (Credit)		
	2004-2005	2005-2006	2006-2007	2004-2005	2005-2006	2006-2007	2004-2005	2005-2006	2006-2007
Horticulture	499	517	479	138	141	114	361	376	365
Hospital and Health Care Administration		1	2			1		1	1
Hospital Central Service Technician	14	18	9				14	18	9
Hospitality	284	325	369	92	83	96	192	242	273
Human Services	1,673	1,639	1,544	441	462	465	1,232	1,177	1,079
Industrial Systems Technology and Maintenance	58	68	108	15	8	10	43	60	98
Information Technology, General	306	218	209	14	6	3	292	212	206
Instrumentation Technology	6	3	2	4	1	1	2	2	1
Interior Design and Merchandising	390	432	491	126	149	155	264	283	336
International Business and Trade	151	166	306	62	47	39	89	119	267
Journalism	66	77	74	51	55	58	15	22	16
Labor and Industrial Relations	16	17	17	4	6	2	12	11	15
Laboratory Science Technology	12	20	11	7	11	6	5	9	5
Legal and Community Interpretation	19	25	29	3	1	4	16	24	25
Library Technician (Aide)	174	149	115	33	39	25	141	110	90
Logistics and Materials Transportation	76	60	62	2	1	7	74	59	55
Manufacturing and Industrial Technology	830	831	915	108	121	126	722	710	789
Marine Technology	2	33	21	1	7	3	1	26	18
Marketing and Distribution	273	284	314	83	100	123	190	184	191
Mass Communications	6	3	4	6	2	1		1	3
Massage Therapy	82	62	32	11	15	9	71	47	23
Medical Assisting	949	876	942	135	125	152	814	751	790
Medical Laboratory Technology	16	62	143	9	18	13	7	44	130
Mortuary Science	89	58	39	40	23	39	49	35	
Natural Resources	46	48	62	30	29	33	16	19	29
Nursing	6,859	7,080	7,781	4,442	4,726	5,169	2,417	2,354	2,612
Nutrition, Foods, and Culinary Arts	1,156	1,195	1,184	143	139	187	1,013	1,056	997
Occupational Therapy Technology	21	21	32	21	21	32			
Ocean Technology	6	9	9	3	4	4	3	5	5
Office Technology/Office Computer Applications	1,774	2,122	1,812	549	541	463	1,225	1,581	1,349
Optical Technology		1						1	



ARCC 2008 Report: Systemwide Indicators

Table 10 (continued)

Program Title	Total Credit Awards			AA/AS Degrees			Certificates (Credit)		
	2004-2005	2005-2006	2006-2007	2004-2005	2005-2006	2006-2007	2004-2005	2005-2006	2006-2007
Orthopedic Assistant	8	6	6	4	2	2	4	4	4
Other Agriculture and Natural Resources	9	4	8	4	1	2	5	3	6
Other Architecture and Environmental Design	3	1	4				3	1	4
Other Business and Management	176	276	268	113	216	190	63	60	78
Other Commercial Services	44	37	3				44	37	3
Other Education	4	1			1		4		
Other Engineering and Related Industrial Technologies	55	49	48	42	31	30	13	18	18
Other Fine and Applied Arts	31	15	8	3	1	2	28	14	6
Other Health Occupations	131	104	115				131	104	115
Other Information Technology	95	96	84		4	1	95	92	83
Other Media and Communications	19	14	8				19	14	8
Other Public and Protective Services	52	61	100	1			51	61	100
Paralegal	898	885	938	385	396	435	513	489	503
Paramedic	373	402	520	85	75	85	288	327	435
Pharmacy Technology	152	176	157	43	52	45	109	124	112
Physical Education	87	96	107	10	10	19	77	86	88
Physical Therapist Assistant	76	67	66	76	66	65		1	1
Physicians Assistant	81	67	64	18	18	6	63	49	58
Plant Science	12	14	8	8	10	5	4	4	3
Polysomnography	9	1	15			9	9	1	6
Printing and Lithography	87	89	98	12	16	10	75	73	88
Psychiatric Technician	475	504	335	41	45	60	434	459	275
Public Administration	31	44	32	9	14	7	22	30	25
Public Relations			4						4
Radiation Therapy Technician	15	9	11	15	9	11			
Radio and Television	230	310	245	125	152	130	105	158	115
Radiologic Technology	598	679	687	379	426	462	219	253	225
Real Estate	502	593	668	168	198	221	334	395	447
Recreation		3						3	
Respiratory Care/Therapy	420	511	537	275	353	399	145	158	138
School Health Clerk	2						2		



ARCC 2008 Report: Systemwide Indicators

Table 10 (continued)

Program Title	Total Credit Awards			AA/AS Degrees			Certificates (Credit)		
	2004-2005	2005-2006	2006-2007	2004-2005	2005-2006	2006-2007	2004-2005	2005-2006	2006-2007
Sign Language	134	153	136	64	73	64	70	80	72
Special Education	32	48	37	8	12	13	24	36	24
Speech/Language Pathology and Audiology	45	55	85	31	37	52	14	18	33
Surgical Technician	36	46	30	5	13	7	31	33	23
Technical Communication	24	18	16	4	4	7	20	14	9
Technical Theater	21	29	27	7	8	12	14	21	15
Travel Services and Tourism	286	257	228	55	48	53	231	209	175
Viticulture, Enology, and Wine Business	36	28	37	17	18	18	19	10	19
Water and Wastewater Technology	98	164	170	31	43	48	67	121	122
World Wide Web Administration	45	65	49	16	16	7	29	49	42
Total	61,993	63,185	65,692	22,188	23,133	23,782	39,805	40,052	41,910

Results:

Table 10 shows the numbers of awards issued by 132 vocational programs across the three most recent academic years, organized alphabetically by program title. The columns under "Total Credit Awards" (i.e., columns 2, 3, and 4) are the sums of degrees plus certificates for the specified years. Totals for all programs are presented in the last row of the table. Degrees make up about 36 to 37 percent of the credit awards issued, with certificates making up the remaining 63 to 64 percent.

For Methodology and Data Source, see Appendix B.



ARCC 2008 Report: Systemwide Indicators

Student Progress and Achievement: Vocational / Occupational / Workforce Development

**Table 11: "Top 25" Vocational Programs in 2006-2007, by Volume of Total Awards
(Program Title based on four-digit TOP Code)
Includes Certificates Requiring Fewer Than 18 Units**

	Program Title	Total Credit Awards 2006-2007	AA/AS Degrees 2006-2007	All Certificates (Credit) 2006-2007
1	Nursing	7,781	5,169	2,612
2	Child Development/Early Care and Education	7,733	1,912	5,821
3	Administration of Justice	6,974	1,834	5,140
4	Fire Technology	3,367	905	2,462
5	Accounting	2,489	1,013	1,476
6	Business Administration	2,451	2,128	323
7	Business Management	2,040	857	1,183
8	Automotive Technology	2,003	290	1,713
9	Office Technology/Office Computer Applications	1,812	463	1,349
10	Emergency Medical Services	1,712	4	1,708
11	Cosmetology and Barbering	1,546	59	1,487
12	Human Services	1,544	465	1,079
13	Business and Commerce, General	1,267	1,097	170
14	Nutrition, Foods, and Culinary Arts	1,184	187	997
15	Electronics and Electric Technology	1,081	262	819
16	Medical Assisting	942	152	790
17	Paralegal	938	435	503
18	Manufacturing and Industrial Technology	915	126	789
19	Construction Crafts Technology	902	86	816
20	Dental Occupations	873	351	522
21	Radiologic Technology	687	462	225
22	Real Estate	668	221	447
23	Computer Information Systems	628	321	307
24	Digital Media	602	233	369
25	Respiratory Care/Therapy	537	399	138

Results:

As shown in Table 11, Nursing programs issued the highest total number of awards in 2006-2007 (i.e., degrees plus certificates), primarily in the form of AA/AS degrees. Child Development/Early Care and Education programs issued the second highest total number of awards, primarily certificates, followed by Administration of Justice programs. The highest number of AA/AS degrees was issued in Nursing, followed by Business Administration.

For Methodology and Data Source, see Appendix B.



ARCC 2008 Report: Systemwide Indicators

Student Progress and Achievement: Vocational / Occupational / Workforce Development

Fig. 6a: Wages for Students Attaining Award in 1998-1999

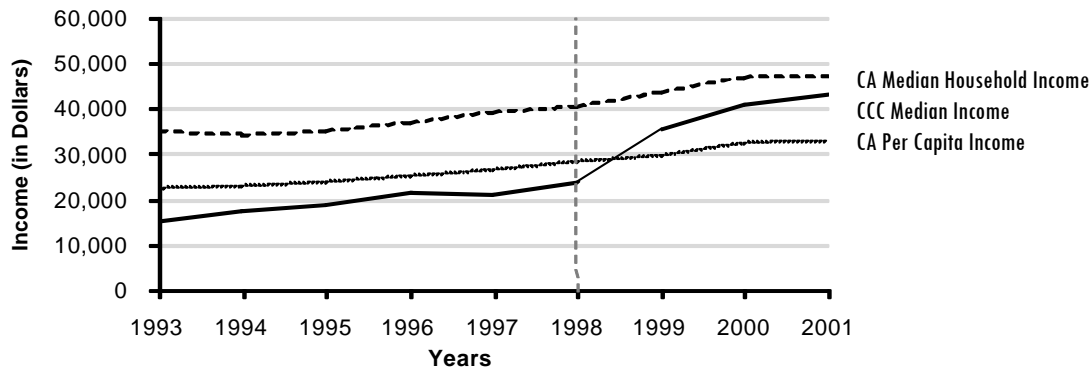


Fig. 6b: Wages for Students Attaining Award in 1999-2000

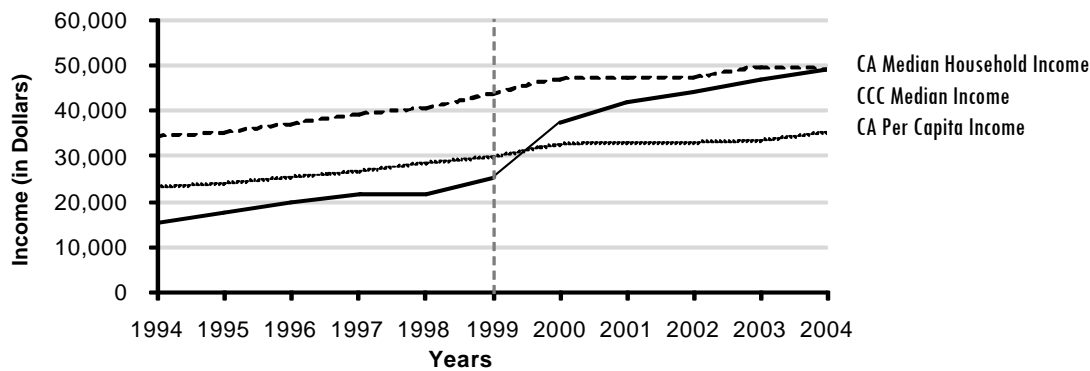
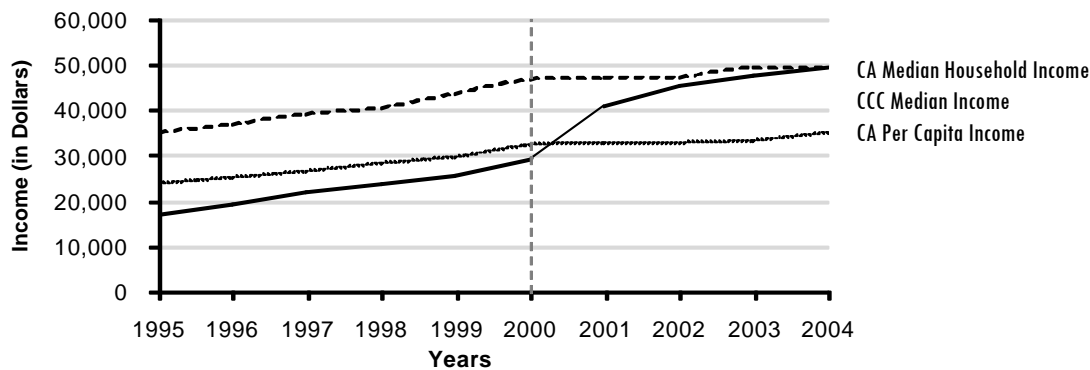


Fig. 6c: Wages for Students Attaining Award in 2000-2001



Results:

Figures 6a, 6b, and 6c represent income trends for students attaining a degree or certificate in (a) 1998-1999, (b) 1999-2000, and (c) 2000-2001. The dashed vertical line in each figure signifies the award year for each cohort. The trend lines for CCC Median Income in Figure 6 (solid line) suggest that students receiving awards from community college programs generally experience wage gains in the years following vocational award attainment for which wage data are available. We include trend lines for California Median Household Income (dashed line) and California Per Capita Income (dotted line) to provide additional perspective.

While there are several important caveats to the CCC Median Income trends shown in these figures, the lines indicate a noticeable “jump” in median income that occurs following receipt of an award. This jump takes place for all three wage cohorts (1998-1999, 1999-2000 and 2000-2001). The wage trends continue at that higher level across the years for which we have post-award wage data.

For Methodology and Data Source, see Appendix B. Note that data for these figures have not changed from the 2007 ARCC report. Updated wage data were not yet available from California’s Employment Development Department for the 2008 ARCC report.



ARCC 2008 Report: Systemwide Indicators

Student Progress and Achievement: Vocational / Occupational / Workforce Development

Table 12a: Income for Students Attaining a Degree or Certificate in 1998-1999

(N = 4,253)
(Data for Figure 6a)

	1993	1994	1995	1996	1997	1998	1999	2000	2001
CA Median Household Income	35,100	34,100	35,300	37,100	39,000	40,600	43,800	46,900	47,177
CA Per Capita Income	22,635	23,203	24,161	25,312	26,490	28,374	29,828	32,463	32,882
CCC Median Income	15,337	17,715	19,188	21,626	21,464	23,841	35,565	40,850	43,206

Table 12b: Income for Students Attaining a Degree or Certificate in 1999-2000

(N = 4,127)
(Data for Figure 6b)

	1994	1995	1996	1997	1998	1999	2000	2001	2002	2003	2004
CA Median Household Income	34,100	35,300	37,100	39,000	40,600	43,800	46,900	47,177	47,500	49,320	49,185
CA Per Capita Income	23,203	24,161	25,312	26,490	28,374	29,828	32,463	32,882	32,803	33,406	35,278
CCC Median Income	15,378	17,840	19,824	21,750	21,797	25,360	37,287	41,925	44,084	46,955	49,083

Table 12c: Income for Students Attaining a Degree or Certificate in 2000-2001

(N = 4,853)
(Data for Figure 6c)

	1995	1996	1997	1998	1999	2000	2001	2002	2003	2004
CA Median Household Income	35,300	37,100	39,000	40,600	43,800	46,900	47,177	47,500	49,320	49,185
CA Per Capita Income	24,161	25,312	26,490	28,374	29,828	32,463	32,882	32,803	33,406	35,278
CCC Median Income	17,059	19,591	22,094	24,099	25,600	29,211	40,845	45,284	47,571	49,534

Results:

The income data in Tables 12a, 12b, and 12c above were used to develop the trend lines depicted in Figures 6a, 6b, and 6c of this report. The last data row of each table, CCC Median Income, contains the annual median income for a cohort of students who received any award during a particular cohort year (1998-1999, 1999-2000, 2000-2001). Data on California Median Household Income and Per Capita Income are included to provide additional perspective on the income trends.

For Methodology and Data Source, see Appendix B. Note that wage data in these tables have not changed from the 2007 ARCC report. Updated wage data for the 2008 ARCC report were not yet available from California's Employment Development Department.



ARCC 2008 Report: Systemwide Indicators

Pre-Collegiate Improvement: Basic Skills and ESL

Table 13:
Annual Number of Credit Basic Skills Improvements

The number of students completing coursework at least one level above their prior basic skills enrollment within the three-year cohort period.

	2002-2003 to 2004-2005	2003-2004 to 2005-2006	2004-2005 to 2006-2007
Number of Students	126,307	122,880	123,682

Results:

As Table 13 indicates, the statewide annual number of students completing coursework at least one level above their prior credit basic skills enrollment coursework declined from the first cohort (2002-2003 to 2004-2005) to the second cohort (2003-2004 to 2005-2006), but has risen slightly in the most recent cohort (2004-2005 to 2006-2007).

For Methodology and Data Source, see Appendix B.



ARCC 2008 Report: Systemwide Indicators

Participation Rates

Table 14:
Systemwide Participation Rate Per 1,000 Population

	2004-2005	2005-2006	2006-2007
Systemwide Participation Rate	65.7	66.0	67.3

Table 15:
Participation Rates by Age Group Per 1,000 Population

	2004-2005	2005-2006	2006-2007
Under 18	13.6	15.0	16.4
18 to 19	357.8	357.7	359.9
20 to 24	259.1	255.7	253.9
25 to 29	126.9	128.5	130.7
30 to 34	77.1	77.5	80.4
35 to 39	59.1	59.6	60.5
40 to 49	48.2	47.4	47.8
50 to 64	33.4	33.7	34.5

Table 16:
Participation Rates by Gender Per 1,000 Population

	2004-2005	2005-2006	2006-2007
Female	73.5	73.5	74.7
Male	57.9	58.5	59.9

Table 17:
Participation Rates by Ethnicity Per 1,000 Population

	2004-2005	2005-2006	2006-2007
Asian	87.4	87.3	88.4
Black/African American	79.5	81.2	82.1
Hispanic	55.1	55.7	56.4
Native American	101.0	99.5	99.8
Pacific Islander	124.8	128.1	130.7
White	54.9	54.5	54.9

Results:

Tables 14 to 18 show how the community colleges provide access to higher education for all segments of the state's population. The participants include substantial numbers from all categories of age, gender, and race/ethnicity.

For Methodology and Data Source, See Appendix B.



ARCC 2008 Report: Systemwide Indicators

Participation Rates

Table 18: Participation Rates by Age, Gender, and Ethnicity Per 1,000 Population

Age	Gender	Ethnicity	2004-2005	2005-2006	2006-2007
Under 18	Female	Asian	29.3	32.6	34.2
Under 18	Female	Black/African American	18.5	21.6	22.5
Under 18	Female	Hispanic	9.0	10.4	12.1
Under 18	Female	Native American	25.2	27.9	29.7
Under 18	Female	Pacific Islander	28.2	31.6	36.4
Under 18	Female	White	15.6	16.2	17.0
Under 18	Male	Asian	24.0	26.5	28.0
Under 18	Male	Black/African American	13.0	15.6	15.9
Under 18	Male	Hispanic	6.7	7.7	8.6
Under 18	Male	Native American	18.7	19.6	21.3
Under 18	Male	Pacific Islander	21.8	24.5	26.8
Under 18	Male	White	11.5	11.8	12.8
18 to 19	Female	Asian	478.9	494.8	507.4
18 to 19	Female	Black/African American	401.5	404.4	399.4
18 to 19	Female	Hispanic	338.9	338.8	339.2
18 to 19	Female	Native American	480.8	478.1	492.6
18 to 19	Female	Pacific Islander	802.7	833.8	875.7
18 to 19	Female	White	337.3	324.5	318.5
18 to 19	Male	Asian	449.4	466.8	491.9
18 to 19	Male	Black/African American	334.0	347.1	359.3
18 to 19	Male	Hispanic	274.2	281.2	282.0
18 to 19	Male	Native American	358.5	352.8	365.1
18 to 19	Male	Pacific Islander	766.1	833.6	902.7
18 to 19	Male	White	291.7	284.6	284.9



ARCC 2008 Report: Systemwide Indicators

Table 18 (continued)

Age	Gender	Ethnicity	2004-2005	2005-2006	2006-2007
20 to 24	Female	Asian	370.1	372.2	379.5
20 to 24	Female	Black/African American	302.1	293.7	286.3
20 to 24	Female	Hispanic	240.0	237.9	235.0
20 to 24	Female	Native American	348.8	324.7	324.4
20 to 24	Female	Pacific Islander	493.6	508.8	531.5
20 to 24	Female	White	249.6	237.4	230.2
20 to 24	Male	Asian	338.2	339.5	343.1
20 to 24	Male	Black/African American	224.4	222.2	222.9
20 to 24	Male	Hispanic	179.4	183.9	184.7
20 to 24	Male	Native American	263.1	259.5	255.7
20 to 24	Male	Pacific Islander	461.2	478.2	485.2
20 to 24	Male	White	214.0	206.6	201.4
25 to 29	Female	Asian	167.5	171.4	177.7
25 to 29	Female	Black/African American	191.7	183.9	180.4
25 to 29	Female	Hispanic	120.6	122.2	121.0
25 to 29	Female	Native American	220.7	225.3	209.1
25 to 29	Female	Pacific Islander	197.1	194.4	207.1
25 to 29	Female	White	121.4	122.2	124.0
25 to 29	Male	Asian	133.1	131.1	135.7
25 to 29	Male	Black/African American	120.9	120.4	119.7
25 to 29	Male	Hispanic	86.4	88.9	88.1
25 to 29	Male	Native American	179.6	165.2	159.3
25 to 29	Male	Pacific Islander	166.0	171.2	181.5
25 to 29	Male	White	101.1	102.4	104.8



ARCC 2008 Report: Systemwide Indicators

Table 18 (continued)

Age	Gender	Ethnicity	2004-2005	2005-2006	2006-2007
30 to 34	Female	Asian	104.6	103.2	106.5
30 to 34	Female	Black/African American	132.4	132.1	132.0
30 to 34	Female	Hispanic	77.5	77.5	78.4
30 to 34	Female	Native American	147.5	138.3	145.4
30 to 34	Female	Pacific Islander	114.8	117.6	113.0
30 to 34	Female	White	69.6	67.9	70.8
30 to 34	Male	Asian	74.7	73.3	72.7
30 to 34	Male	Black/African American	80.3	83.6	85.7
30 to 34	Male	Hispanic	52.1	54.4	55.7
30 to 34	Male	Native American	124.7	129.6	125.8
30 to 34	Male	Pacific Islander	105.1	107.2	107.3
30 to 34	Male	White	57.9	58.0	60.7
35 to 39	Female	Asian	81.1	81.1	81.9
35 to 39	Female	Black/African American	106.6	109.4	105.5
35 to 39	Female	Hispanic	59.7	58.7	59.3
35 to 39	Female	Native American	116.1	120.4	118.2
35 to 39	Female	Pacific Islander	79.6	87.9	85.1
35 to 39	Female	White	55.9	55.4	54.8
35 to 39	Male	Asian	50.9	52.0	52.5
35 to 39	Male	Black/African American	64.1	68.1	69.9
35 to 39	Male	Hispanic	37.8	38.3	38.8
35 to 39	Male	Native American	93.7	103.0	103.0
35 to 39	Male	Pacific Islander	79.9	88.5	87.5
35 to 39	Male	White	43.1	44.0	44.8



ARCC 2008 Report: Systemwide Indicators

Table 18 (continued)

Age	Gender	Ethnicity	2004-2005	2005-2006	2006-2007
40 to 49	Female	Asian	63.4	62.1	62.7
40 to 49	Female	Black/African American	82.6	81.6	81.9
40 to 49	Female	Hispanic	48.4	47.4	47.1
40 to 49	Female	Native American	90.5	83.2	87.6
40 to 49	Female	Pacific Islander	70.8	72.4	67.8
40 to 49	Female	White	49.1	47.7	46.7
40 to 49	Male	Asian	36.8	35.6	36.2
40 to 49	Male	Black/African American	52.0	53.8	54.9
40 to 49	Male	Hispanic	28.6	28.7	29.2
40 to 49	Male	Native American	73.0	71.3	69.3
40 to 49	Male	Pacific Islander	62.5	59.8	60.0
40 to 49	Male	White	32.7	32.2	32.4
50 to 64	Female	Asian	40.4	40.9	41.9
50 to 64	Female	Black/African American	44.3	45.3	46.7
50 to 64	Female	Hispanic	28.5	28.1	28.9
50 to 64	Female	Native American	59.7	58.2	57.7
50 to 64	Female	Pacific Islander	38.6	37.7	43.8
50 to 64	Female	White	36.5	36.7	36.9
50 to 64	Male	Asian	26.3	26.0	26.3
50 to 64	Male	Black/African American	30.6	32.8	34.3
50 to 64	Male	Hispanic	17.3	17.4	18.1
50 to 64	Male	Native American	44.8	43.8	43.3
50 to 64	Male	Pacific Islander	38.2	35.3	32.5
50 to 64	Male	White	22.6	22.7	22.6

Results:

For Methodology and Data Source, See Appendix B.

