

**ARCC 2010 Report:  
An Introduction to the Systemwide Indicators**

The Accountability Reporting for the Community Colleges (ARCC) framework specifies that community college performance data should be aggregated, analyzed, and reported at two levels: the individual college level (college level indicators) and across the community college system (systemwide indicators).

Tables 1 through 18 and Figures 1 through 6 in the following section of the ARCC report present results for the seven performance indicators chosen for **systemwide** accountability reporting, organized into four major categories:

- Student Progress and Achievement – Degree/Certificate/Transfer
- Student Progress and Achievement – Vocational/Occupational/Workforce Development
- Pre-Collegiate Improvement – Basic Skills and ESL
- Participation Rates

The seven performance indicators presented in this section are:

1. The annual number and percentage of baccalaureate students graduating from UC and CSU who originally attended a California Community College
2. The annual number of Community College transfers to baccalaureate granting institutions
3. The transfer rate to baccalaureate granting institutions from the California Community College System
4. The annual number of degrees/certificates conferred by vocational programs
5. The increase in total personal income following completion of a vocational degree/certificate
6. The annual number of basic skills improvements
7. Systemwide participation rates (by selected demographics).

The Data Sources and Methodology for each of the indicators can be found in Appendix B.

The time periods and data sources differ across performance indicators so it is important to pay attention to the dates and information specified in the column headings and titles for each table or figure.

For the 2010 report, systemwide participation rates per 1,000 population reflect community college participation by individuals ages 18 to 65 only, based on data from the Chancellor's Office Management Information System (COMIS) and the California Department of Finance (DOF). For a few demographic categories the participation rate

## **An Introduction to the Systemwide Indicators**

per 1,000 exceeds 1,000. Possible reasons for these higher rates are as follows. Self reporting of demographics (e.g., student ethnicity) leads to higher community college counts for a particular group relative to DOF's Census-based projections. This is especially true for population groups with relatively small DOF counts. In addition, absence of a unique identifier (e.g., Social Security Number) for some students at the systemwide level might produce duplicate student counts thus increasing the systemwide numbers for certain demographics relative to DOF counts.

Note that these systemwide indicators are not simply statewide aggregations of the college level indicators presented elsewhere in this report. Some systemwide indicators cannot be broken down to a college level or do not make sense when evaluated on a college level. For example, students may transfer between, or concurrently attend courses at, multiple community colleges during their studies, and their performance outcomes must be analyzed using data from several community colleges rather than from an individual college.

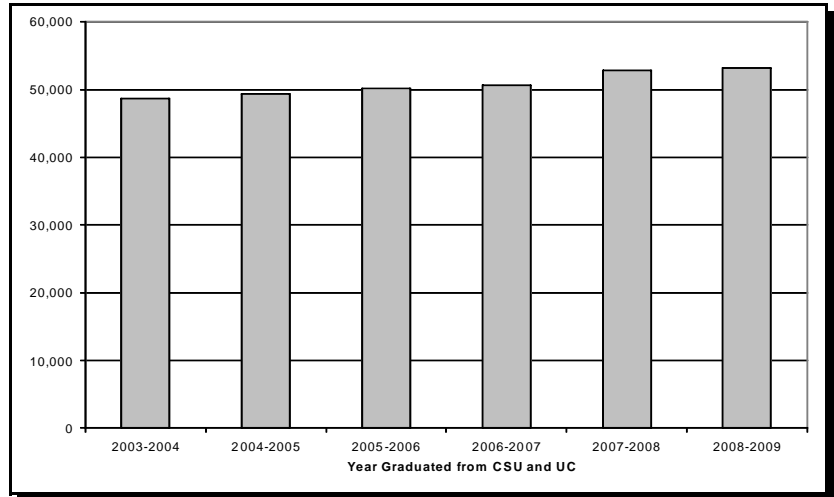
Additional analysis for the 2010 ARCC report revealed that a data-reporting artifact may occur for the year that an institution joins National Student Clearinghouse (NSC). All of the matches that occur for that institution from previous years (a cumulative count that spans pre-NSC membership years) would be reported by the NSC as transfers for that first year. To eliminate this artifact from the ARCC report, we zero out the transfer count for the first year that an institution joins the NSC. Therefore, the volume of transfer counts for Tables 4, 5 and 8 (ISP and OOS) is lower for the same years from previous ARCC reports.

# ARCC 2010 Report: Systemwide Indicators

## Student Progress and Achievement: Degree/Certificate/Transfer

**Figure 1:**

Annual Number of California State University (CSU) and University of California (UC) Baccalaureate Students from 2003-2004 to 2008-2009 Who Attended a California Community College (CCC)



**Table 1:**

Annual Number of California State University (CSU) and University of California (UC) Baccalaureate Students from 2003-2004 to 2008-2009 Who Attended a California Community College (CCC)

	Year Graduated From CSU or UC					
	2003-2004	2004-2005	2005-2006	2006-2007	2007-2008	2008-2009
<b>Total BA/BS (CSU &amp; UC)</b>	104,320	107,630	110,990	112,464	115,548	117,309
<b>Total Who Attended CCC</b>	48,657	49,439	50,248	50,611	52,825	53,238
<b>CSU and UC Percent</b>	46.6%	45.9%	45.3%	45.0%	45.3%	45.4%

**Table 2:**

Annual Number and Percentage of CSU Baccalaureate Students from 2003-2004 to 2008-2009 Who Attended a CCC

	Year Graduated From CSU					
	2003-2004	2004-2005	2005-2006	2006-2007	2007-2008	2008-2009
<b>Total BA/BS from CSU</b>	65,741	66,768	69,350	70,877	73,132	74,643
<b>Total Who Attended CCC</b>	37,329	37,316	38,365	38,827	40,337	40,968
<b>CSU Percent</b>	56.8%	55.9%	55.3%	54.8%	55.3%	54.9%

**Table 3:**

Annual Number and Percentage of UC Baccalaureate Students from 2003-2004 to 2008-2009 Who Attended a CCC

	Year Graduated From UC					
	2003-2004	2004-2005	2005-2006	2006-2007	2007-2008	2008-2009
<b>Total BA/BS from UC</b>	38,579	40,862	41,640	41,587	42,416	42,666
<b>Total Who Attended CCC</b>	11,328	12,123	11,883	11,784	12,488	12,270
<b>UC Percent</b>	29.4%	29.7%	28.5%	28.3%	29.4%	28.8%

### Results:

Figure 1 presents an increasing six-year trend of the annual number of California State University (CSU) and University of California (UC) baccalaureate students who attended a California Community College (CCC). Table 1 shows the number of CSU and UC baccalaureate students, and of those, the total who attended a CCC. The table also reflects the percentage of graduates who originally attended a CCC across the six-year period. Table 2 displays the annual number and percentage of CSU students and Table 3 portrays the UC students.

For Methodology and Data Source, see Appendix B.



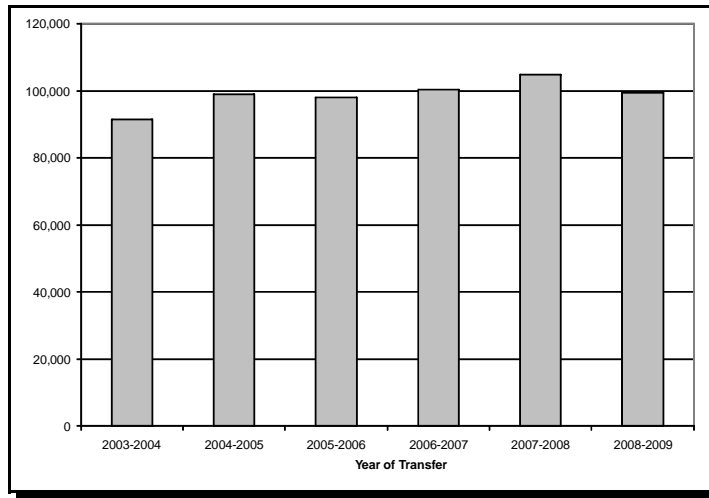
Chancellor's Office  
California Community Colleges

1102 Q Street Sacramento, California 95811-6539 www.cccco.edu

# ARCC 2010 Report: Systemwide Indicators

## Student Progress and Achievement: Degree/Certificate/Transfer

**Figure 2:**  
Annual Number of California Community College  
Transfers to Baccalaureate Granting Institutions  
from 2003-2004 to 2008-2009



**Table 4:**  
Annual Number of California Community College  
Transfers to Baccalaureate Granting Institutions  
from 2003-2004 to 2008-2009

	Year of Transfer					
	2003-2004	2004-2005	2005-2006	2006-2007	2007-2008	2008-2009
<b>Total Transfers</b>	91,443	99,034	98,113	100,529	104,855	99,583

**Table 5:**  
Annual Number of California Community College  
Transfers to California State University (CSU),  
University of California (UC), In-State Private (ISP) and  
Out-of-State (OOS) Baccalaureate Granting Institutions

	Year of Transfer					
	2003-2004	2004-2005	2005-2006	2006-2007	2007-2008	2008-2009
<b>CSU Transfers</b>	48,321	53,695	52,641	54,391	54,971	49,770
<b>UC Transfers</b>	12,539	13,114	13,510	13,871	13,909	14,059
<b>ISP Transfers</b>	19,311	20,000	19,429	19,312	21,927	19,827
<b>OOS Transfers</b>	11,272	12,225	12,533	12,955	14,048	15,927

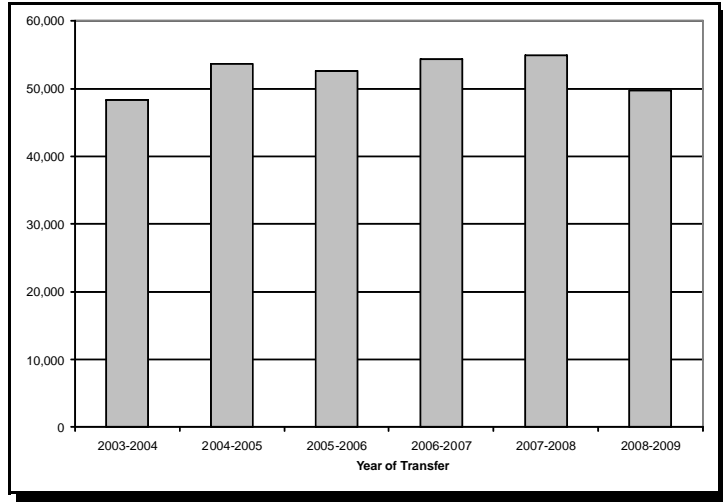
### Results:

Figure 2 and Table 4 feature the annual number of California Community College (CCC) transfers to four-year institutions across six years. Although there is a general increase over time, the overall number of transfers declines in 2005-2006 and 2008-2009. Table 5 displays the annual number of transfers for four segments; California State University (CSU), University of California (UC), In-State Private and Out-of-State (OOS) four-year institutions.

For Methodology and Data Source, see Appendix B.



**Figure 3:**  
Annual Number of California Community College  
Transfers to California State University (CSU)  
from 2003-2004 to 2008-2009



**Table 6:**  
Annual Number of California Community College  
Transfers to California State University (CSU)  
from 2003-2004 to 2008-2009

	Year of Transfer					
	2003-2004	2004-2005	2005-2006	2006-2007	2007-2008	2008-2009
<b>CSU Transfers</b>	48,321	53,695	52,641	54,391	54,971	49,770

### Results:

Figure 3 and Table 6 display the annual number of California Community College (CCC) transfers to California State University (CSU). The number of transfers decreases in 2005-2006 but increases the subsequent two years (2006-2007 and 2007-2008) before decreasing again in 2008-2009.

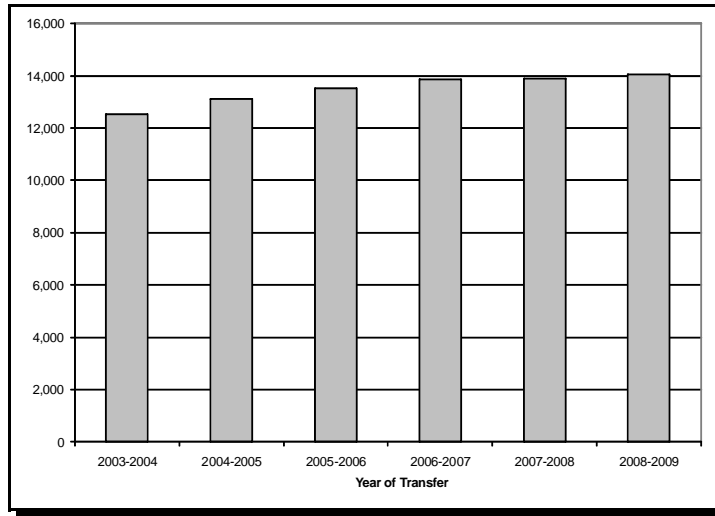
For Methodology and Data Source, see Appendix B.



# ARCC 2010 Report: Systemwide Indicators

## Student Progress and Achievement: Degree/Certificate/Transfer

**Figure 4:**  
Annual Number of California Community College  
Transfers to the University of California (UC)  
from 2003-2004 to 2008-2009



**Table 7:**  
Annual Number of California Community College  
Transfers to the University of California (UC)  
from 2003-2004 to 2008-2009

	Year of Transfer					
	2003-2004	2004-2005	2005-2006	2006-2007	2007-2008	2008-2009
UC Transfers	12,539	13,114	13,510	13,874	13,909	14,059

### Results:

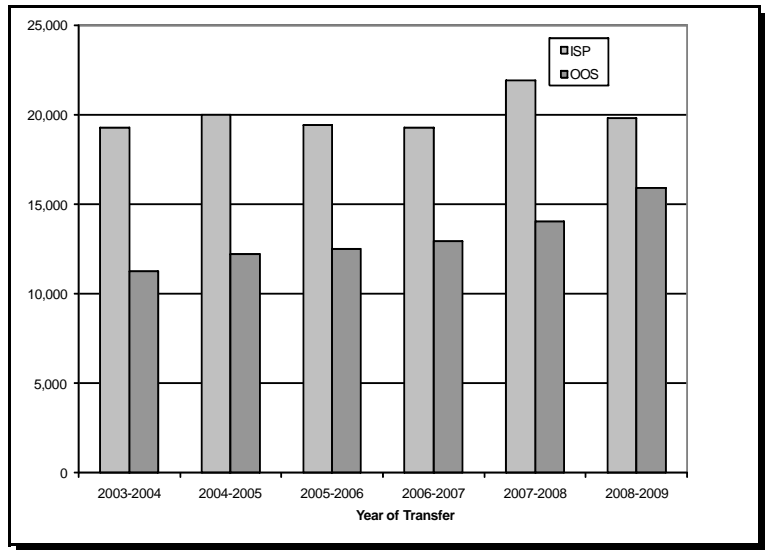
Figure 4 and Table 7 illustrate the annual number of California Community College (CCC) transfers to University of California (UC). The number of transfers increases across the six-year period.

For Methodology and Data Source, see Appendix B.



## Student Progress and Achievement: Degree/Certificate/Transfer

**Figure 5:**  
Annual Number of California Community College Transfers to In-State Private (ISP) and Out-of-State (OOS) Baccalaureate Granting Institutions from 2003-2004 to 2008-2009



**Table 8:**  
Annual Number of California Community College Transfers to In-State Private (ISP) and Out-of-State (OOS) Baccalaureate Granting Institutions from 2003-2004 to 2008-2009

	Year of Transfer					
	2003-2004	2004-2005	2005-2006	2006-2007	2007-2008	2008-2009
<b>ISP Transfers</b>	19,311	20,000	19,429	19,312	21,927	19,827
<b>OOS Transfers</b>	11,272	12,225	12,533	12,955	14,048	15,927

### Results:

The annual number of California Community College (CCC) transfers to In-State Private (ISP) and Out-of-State (OOS) four-year institutions is displayed in Figure 5 and Table 8. The transfer volume decreases for ISP four-year institutions and increases for OOS four-year institutions for the most recent academic year, 2008-2009.

For Methodology and Data Source, see Appendix B.



# ARCC 2010 Report: Systemwide Indicators

## Student Progress and Achievement: Degree/Certificate/Transfer

---

**Table 9:**  
Transfer Rate to Baccalaureate Granting Institutions

Percentage of first-time students with a minimum of 12 units earned who attempted transfer-level Math or English during enrollment who transferred to a Baccalaureate granting institution within six years.

	2001-2002 to 2006-2007	2002-2003 to 2007-2008	2003-2004 to 2008-2009
<b>Transfer Rate</b>	40.2%	40.5%	40.9%

---

### Results:

Table 9 reflects the statewide transfer rate to four-year institutions for three different cohorts of first-time students. The cohorts include students who earned at least 12 units and who attempted transfer-level Math or English during the six-year enrollment period. The transfer rate increases slightly over time, with the rate of transfer to four-year institutions for the 2003-2004 cohort at 40.9%.

For Methodology and Data Source, see Appendix B



# ARCC 2010 Report: Systemwide Indicators

## Student Progress and Achievement: Vocational / Occupational / Workforce Development

**Table 10: Annual Number of Vocational Awards by Program from 2006-2007 to 2008-2009**  
(Program Title based on four-digit TOP Code, Alphabetical Order)

Includes Certificates Requiring Fewer Than 18 Units

Program Title	Total Credit Awards			AA/AS Degrees			Certificates (Credit)		
	2006-2007	2007-2008	2008-2009	2006-2007	2007-2008	2008-2009	2006-2007	2007-2008	2008-2009
Accounting	2,487	2,431	2,548	1,012	1,018	1,038	1,475	1,413	1,510
Administration of Justice	6,980	6,414	6,180	1,834	1,800	2,074	5,146	4,614	4,106
Aeronautical and Aviation Technology	403	311	332	79	68	51	324	243	281
Agricultural Power Equipment Technology	56	87	97	9	7	14	47	80	83
Agriculture Business, Sales and Service	76	62	98	68	53	63	8	9	35
Agriculture Technology and Sciences, General	24	29	50	19	17	26	5	12	24
Animal Science	463	467	456	310	288	286	153	179	170
Applied Photography	179	215	148	65	80	66	114	135	82
Architecture and Architectural Technology	313	460	442	138	198	211	175	262	231
Athletic Training and Sports Medicine	20	15	21	14	15	17	6	0	4
Automotive Collision Repair	134	114	173	11	22	27	123	92	146
Automotive Technology	2,011	2,157	1,885	290	304	326	1,721	1,853	1,559
Aviation and Airport Management and	204	209	173	138	144	116	66	65	57
Banking and Finance	68	53	57	36	20	34	32	33	23
Biotechnology and Biomedical Technology	204	173	99	47	35	27	157	138	72
Business Administration	2,433	2,652	2,701	2,113	2,284	2,358	320	368	343
Business and Commerce, General	1,260	1,433	1,456	1,092	1,195	1,292	168	238	164
Business Management	2,036	1,518	2,091	854	822	881	1,182	696	1,210
Cardiovascular Technician	152	119	142	49	47	62	103	72	80
Chemical Technology	13	15	3	4	2	1	9	13	2
Child Development/Early Care and Education	7,766	7,090	7,130	1,916	1,821	1,890	5,850	5,269	5,240
Civil and Construction Management	410	410	552	85	117	120	325	293	432
Commercial Art	44	80	55	30	64	39	14	16	16
Commercial Music	179	228	311	38	53	56	141	175	255
Community Health Care Worker	5	7	8	0	1	3	5	6	5
Computer Information Systems	630	593	575	323	311	314	307	282	261
Computer Infrastructure and Support	527	663	561	171	172	201	356	491	360
Computer Software Development	370	309	357	126	115	92	244	194	265
Construction Crafts Technology	904	1,155	1,168	87	107	130	817	1,048	1,038



# ARCC 2010 Report: Systemwide Indicators

**Table 10** (continued)

Program Title	Total Credit Awards			AA/AS Degrees			Certificates (Credit)		
	2006-2007	2007-2008	2008-2009	2006-2007	2007-2008	2008-2009	2006-2007	2007-2008	2008-2009
Cosmetology and Barbering	1,546	1,495	1,538	59	89	91	1,487	1,406	1,447
Customer Service	3	2	5	0	0	1	3	2	4
Dental Occupations	875	802	915	353	368	414	522	434	501
Diagnostic Medical Sonography	88	64	74	23	35	47	65	29	27
Diesel Technology	179	279	261	36	45	49	143	234	212
Digital Media	602	529	558	233	205	241	369	324	317
Drafting Technology	473	539	519	171	178	171	302	361	348
Educational Aide (Teacher Assistant)	53	58	103	21	12	22	32	46	81
Educational Technology	2	3	2	2	2	1	0	1	1
Electro-Mechanical Technology	26	35	25	8	12	5	18	23	20
Electro-Neurodiagnostic Technology	6	15		5	15		1	0	
Electrocardiography	18	19	20	0	0	0	18	19	20
Electronics and Electric Technology	1,089	888	954	262	236	231	827	652	723
Emergency Medical Services	1,712	1,347	1,934	4	4	6	1,708	1,343	1,928
Engineering Technology, General (requires Trigonometry)	20	16	20	14	10	12	6	6	8
Environmental Control Technology	315	423	480	49	51	57	266	372	423
Environmental Technology	238	183	120	24	35	10	214	148	110
Family and Consumer Sciences, General	117	110	116	106	107	115	11	3	1
Family Studies	13	42	43	9	39	42	4	3	1
Fashion	354	379	407	109	152	120	245	227	287
Fire Technology	3,373	3,073	2,759	908	934	883	2,465	2,139	1,876
Food Processing and Related Technologies	1			1			0		
Forestry	76	54	50	30	26	21	46	28	29
Gerontology	46	38	75	16	19	16	30	19	59
Graphic Art and Design	387	352	350	194	162	160	193	190	190
Health Information Technology	323	301	175	102	92	49	221	209	126
Health Occupations, General	30	33	59	6	4	46	24	29	13
Health Professions, Transfer Core Curriculum	196	191	290	189	187	285	7	4	5
Horticulture	478	356	346	113	111	121	365	245	225
Hospital and Health Care Administration	2	2		1	1		1	1	
Hospital Central Service Technician	9	17	36	0	0	0	9	17	36



# ARCC 2010 Report: Systemwide Indicators

**Table 10** (continued)

Program Title	Total Credit Awards			AA/AS Degrees			Certificates (Credit)		
	2006-2007	2007-2008	2008-2009	2006-2007	2007-2008	2008-2009	2006-2007	2007-2008	2008-2009
Hospitality	370	380	403	96	101	116	274	279	287
Human Services	1,548	1,547	1,476	466	452	442	1,082	1,095	1,034
Industrial Systems Technology and Maintenance	108	81	89	10	9	7	98	72	82
Information Technology, General	209	116	156	3	9	2	206	107	154
Instrumentation Technology	2	5	2	1	1	1	1	4	1
Insurance		1	7		0	2		1	5
Interior Design and Merchandising	491	561	414	155	188	161	336	373	253
International Business and Trade	306	164	296	39	56	47	267	108	249
Journalism	74	85	90	58	67	66	16	18	24
Labor and Industrial Relations	17	24	11	2	2	3	15	22	8
Laboratory Science Technology	11	28	15	6	10	7	5	18	8
Legal and Community Interpretation	29	20	50	4	5	9	25	15	41
Library Technician (Aide)	117	155	143	25	36	32	92	119	111
Logistics and Materials Transportation	62	51	37	7	0	3	55	51	34
Manufacturing and Industrial Technology	917	774	888	128	126	145	789	648	743
Marine Technology	21	31		3	1		18	30	
Marketing and Distribution	317	265	228	125	103	103	192	162	125
Mass Communications	4	4	5	1	2	4	3	2	1
Massage Therapy	32	31	40	9	9	9	23	22	31
Medical Assisting	971	837	922	152	146	130	819	691	792
Medical Laboratory Technology	143	123	126	13	20	16	130	103	110
Mortuary Science	39	47	51	39	47	51	0	0	0
Natural Resources	64	62	63	35	44	38	29	18	25
Nursing	7,782	8,262	8,515	5,168	5,742	5,970	2,614	2,520	2,545
Nutrition, Foods, and Culinary Arts	1,181	1,339	1,228	186	192	157	995	1,147	1,071
Occupational Therapy Technology	32	43	66	32	43	65	0	0	1
Ocean Technology	9	15	6	4	2	4	5	13	2
Office Technology/Office Computer Applications	1,838	1,747	1,546	479	482	427	1,359	1,265	1,119
Orthopedic Assistant	6	9	12	2	5	5	4	4	7
Other Agriculture and Natural Resources	8	5	11	2	2	7	6	3	4
Other Architecture and Environmental Design	4	1	2	0	1	0	4	0	2



# ARCC 2010 Report: Systemwide Indicators

**Table 10** (continued)

Program Title	Total Credit Awards			AA/AS Degrees			Certificates (Credit)		
	2006-2007	2007-2008	2008-2009	2006-2007	2007-2008	2008-2009	2006-2007	2007-2008	2008-2009
Other Business and Management	268	330	290	190	237	258	78	93	32
Other Commercial Services	3	0	0	0	0	0	3	0	0
Other Education		1			0			1	
Other Engineering and Related Industrial Technology	48	56	111	30	25	39	18	31	72
Other Family and Consumer Sciences			1			0			1
Other Fine and Applied Arts	8	12	6	2	2	2	6	10	4
Other Health Occupations	115	93	89	0	0	0	115	93	89
Other Information Technology	81	86	126	1	1	0	80	85	126
Other Media and Communications	8	4	4	0	0	0	8	4	4
Other Public and Protective Services	100	53	95	0	0	2	100	53	93
Paralegal	941	911	841	439	389	357	502	522	484
Paramedic	535	450	439	86	95	73	449	355	366
Pharmacy Technology	161	163	188	45	46	53	116	117	135
Physical Therapist Assistant	66	116	103	65	116	103	1	0	0
Physicians Assistant	64	73	69	6	9	10	58	64	59
Plant Science	8	14	35	5	10	14	3	4	21
Polysomnography	15	2	8	9	2	8	6	0	0
Printing and Lithography	98	73	47	10	15	9	88	58	38
Psychiatric Technician	335	431	563	60	45	56	275	386	507
Public Administration	32	30	34	7	9	14	25	21	20
Public Relations	4	5	3	0	1	1	4	4	2
Radiation Therapy Technician	11	14	9	11	13	7	0	1	2
Radio and Television	245	242	242	130	127	105	115	115	137
Radio, Motion Picture and Television		2	1		0	0		2	1
Radiologic Technology	687	621	575	462	427	387	225	194	188
Real Estate	668	567	444	221	224	180	447	343	264
Respiratory Care/Therapy	537	528	587	399	411	423	138	117	164
Special Education	38	42	34	14	11	19	24	31	15
Speech/Language Pathology and Audiology	84	79	126	51	59	82	33	20	44
Surgical Technician	30	40	49	7	14	10	23	26	39
Technical Communication	16	14	14	7	2	3	9	12	11



# ARCC 2010 Report: Systemwide Indicators

**Table 10** (continued)

Program Title	Total Credit Awards			AA/AS Degrees			Certificates (Credit)		
	2006-2007	2007-2008	2008-2009	2006-2007	2007-2008	2008-2009	2006-2007	2007-2008	2008-2009
Technical Theater	27	20	34	12	8	8	15	12	26
Travel Services and Tourism	228	239	153	53	34	44	175	205	109
Viticulture, Enology, and Wine Business	40	22	29	18	13	18	22	9	11
Water and Wastewater Technology	174	159	225	47	52	70	127	107	155
World Wide Web Administration	49	49	42	7	6	7	42	43	35
<b>Total</b>	<b>65,437</b>	<b>63,468</b>	<b>64,617</b>	<b>23,650</b>	<b>24,617</b>	<b>25,422</b>	<b>41,787</b>	<b>38,851</b>	<b>39,195</b>

## Results:

Table 10 shows the numbers of awards issued by 127 vocational programs across the three most recent academic years, organized alphabetically by program title. The columns under "Total Credit Awards" (i.e., columns 2, 3, and 4) are the sums of degrees plus certificates for the specified years. Totals for all programs are presented in the last row of the table. Degrees make up about 36 to 39 percent of the credit awards issued, with certificates making up the remaining 61 to 64 percent.

For Methodology and Data Source, see Appendix B.



# ARCC 2010 Report: Systemwide Indicators

## Student Progress and Achievement: Vocational / Occupational / Workforce Development

**Table 11: "Top 25" Vocational Programs in 2008-2009, by Volume of Total Awards  
(Program Title based on four-digit TOP Code)**

Includes Certificates Requiring Fewer Than 18 Units

	Program Title	Total Credit Awards 2008-2009	AA/AS Degrees 2008-2009	All Certificates (Credit) 2008-2009
1	Nursing	8,515	5,970	2,545
2	Child Development/Early Care and Education	7,130	1,890	5,240
3	Administration of Justice	6,180	2,074	4,106
4	Fire Technology	2,759	883	1,876
5	Business Administration	2,701	2,358	343
6	Accounting	2,548	1,038	1,510
7	Business Management	2,091	881	1,210
8	Emergency Medical Services	1,934	6	1,928
9	Automotive Technology	1,885	326	1,559
10	Office Technology/Office Computer Applications	1,546	427	1,119
11	Cosmetology and Barbering	1,538	91	1,447
12	Human Services	1,476	442	1,034
13	Business and Commerce, General	1,456	1,292	164
14	Nutrition, Foods, and Culinary Arts	1,228	157	1,071
15	Construction Crafts Technology	1,168	130	1,038
16	Electronics and Electric Technology	954	231	723
17	Medical Assisting	922	130	792
18	Dental Occupations	915	414	501
19	Manufacturing and Industrial Technology	888	145	743
20	Paralegal	841	357	484
21	Respiratory Care/Therapy	587	423	164
22	Computer Information Systems	575	314	261
23	Radiologic Technology	575	387	188
24	Psychiatric Technician	563	56	507
25	Computer Infrastructure and Support	561	201	360

### Results:

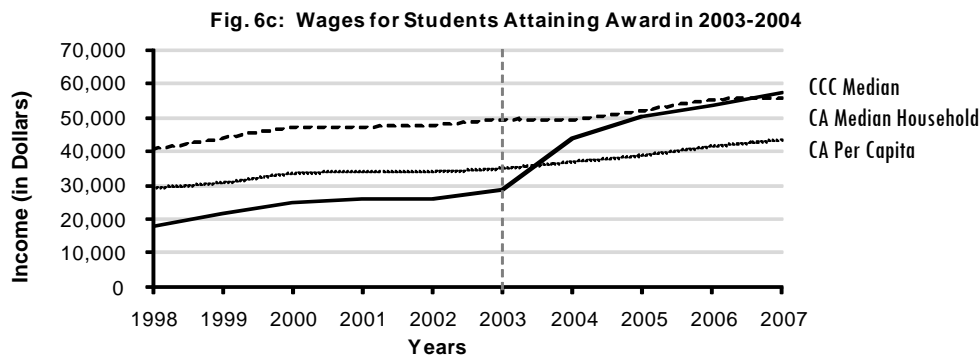
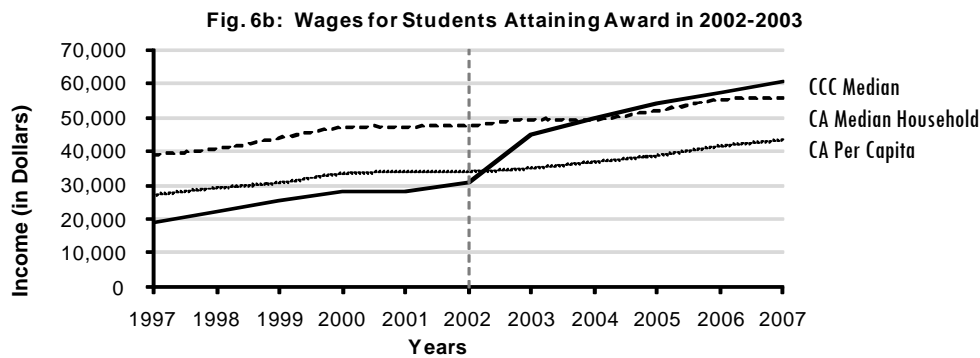
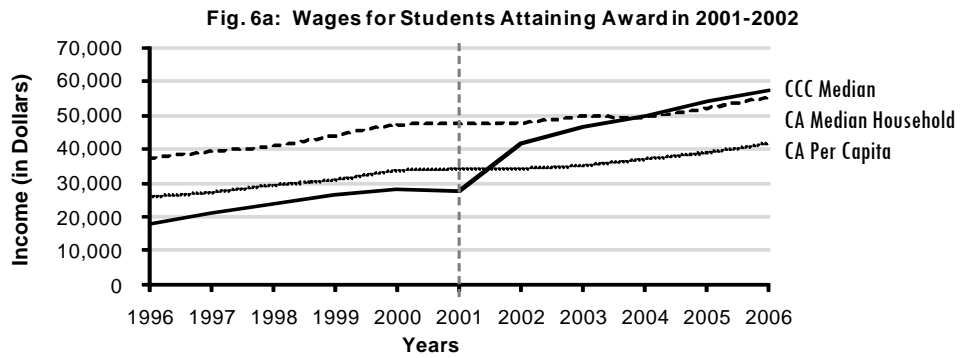
As shown in Table 11, Nursing programs issued the highest total number of awards in 2008-2009 (i.e., degrees plus certificates), primarily in the form of AA/AS degrees. Child Development/Early Care and Education programs issued the second highest total number of awards, primarily certificates, followed by Administration of Justice programs. The highest number of AA/AS degrees was issued in Nursing, followed by Business Administration.

For Methodology and Data Source, see Appendix B.



# ARCC 2010 Report: Systemwide Indicators

## Student Progress and Achievement: Vocational / Occupational / Workforce Development



### Results:

Figures 6a, 6b, and 6c represent income trends for students attaining a degree or certificate in (a) 2001-2002, (b) 2002-2003, and (c) 2003-2004. The dashed vertical line in each figure signifies the award year for each cohort. The trend lines for CCC Median Income in Figure 6 (solid line) suggest that students receiving awards from community college programs generally experience wage gains in the years following vocational award attainment for which wage data are available. We include trend lines for California Median Household Income (dashed line) and California Per Capita Income (dotted line) to provide additional perspective.

While there are several important caveats to the CCC Median Income trends shown in these figures, the lines indicate a noticeable “jump” in median income that occurs following receipt of an award. This jump takes place for all three wage cohorts (2001-2002, 2002-2003, and 2003-2004). The wage trends continue at that higher level across the years for which we have post-award wage data.

For Methodology and Data Source, see Appendix B.



# ARCC 2010 Report: Systemwide Indicators

## Student Progress and Achievement: Vocational / Occupational / Workforce Development

**Table 12a: Income for Students Attaining a Degree or Certificate in 2001-2002**

(N = 4,936)  
(Data for Figure 6a)

	1996	1997	1998	1999	2000	2001	2002	2003	2004	2005	2006
<b>CA Median Household Income</b>	37,100	39,000	40,600	43,800	46,900	47,177	47,500	49,320	49,185	51,831	55,000
<b>CA Per Capita Income</b>	25,788	27,063	29,195	30,679	33,394	33,869	34,006	34,922	36,830	38,670	41,404
<b>CCC Median Income</b>	17,930	20,830	23,619	26,421	27,887	27,724	41,797	46,621	50,005	54,190	57,390

**Table 12b: Income for Students Attaining a Degree or Certificate in 2002-2003**

(N = 5,939)  
(Data for Figure 6b)

	1997	1998	1999	2000	2001	2002	2003	2004	2005	2006	2007
<b>CA Median Household Income</b>	39,000	40,600	43,800	46,900	47,177	47,500	49,320	49,185	51,831	55,000	55,450
<b>CA Per Capita Income</b>	27,063	29,195	30,679	33,394	33,869	34,006	34,922	36,830	38,670	41,404	43,221
<b>CCC Median Income</b>	18,669	22,047	25,415	28,083	28,215	31,022	44,843	49,711	54,386	57,370	60,880

**Table 12c: Income for Students Attaining a Degree or Certificate in 2003-2004**

(N = 4,933)  
(Data for Figure 6c)

	1998	1999	2000	2001	2002	2003	2004	2005	2006	2007
<b>CA Median Household Income</b>	40,600	43,800	46,900	47,177	47,500	49,320	49,185	51,831	55,000	55,450
<b>CA Per Capita Income</b>	29,195	30,679	33,394	33,869	34,006	34,922	36,830	38,670	41,404	43,221
<b>CCC Median Income</b>	17,788	21,685	25,082	26,212	25,856	28,828	43,760	50,502	53,784	57,594

### Results:

The income data in Tables 12a, 12b, and 12c above were used to develop the trend lines depicted in Figures 6a, 6b, and 6c of this report. The last data row of each table, CCC Median Income, contains the annual median income for a cohort of students who received any award during a particular cohort year (2001-2002, 2002-2003, 2003-2004). Data on California Median Household Income and Per Capita Income are included to provide additional perspective on the income trends.

For Methodology and Data Source, see Appendix B.



# ARCC 2010 Report: Systemwide Indicators

## Pre-Collegiate Improvement: Basic Skills and ESL

---

**Table 13:**  
Annual Number of Credit Basic Skills Improvements

The number of students completing coursework at least one level above their prior basic skills enrollment within the three-year cohort period.

	2004-2005 to 2006-2007	2005-2006 to 2007-2008	2006-2007 to 2008-2009
Number of Students	92,620	93,284	96,075

---

### Results:

As Table 13 indicates, the statewide annual number of students completing coursework at least one level above their prior credit basic skills enrollment coursework increased slightly from the first cohort (2004-2005 to 2006-2007) to the second cohort (2005-2006 to 2007-2008), with a relatively larger increase from the second cohort to the most recent cohort (2006-2007 to 2008-2009).

For Methodology and Data Source, see Appendix B.



# ARCC 2010 Report: Systemwide Indicators

## Participation Rates

**Table 14:**  
Systemwide Participation Rate Per 1,000 Population

	2006-2007	2007-2008	2008-2009
<b>Systemwide Participation Rate</b>	85.5	87.6	89.9

**Table 15:**  
Participation Rates by Age Group Per 1,000 Population

	2006-2007	2007-2008	2008-2009
<b>18 to 19</b>	327.3	332.4	340.0
<b>20 to 24</b>	229.7	235.2	243.1
<b>25 to 29</b>	116.8	121.4	124.8
<b>30 to 34</b>	72.1	75.6	78.7
<b>35 to 39</b>	54.1	55.2	55.9
<b>40 to 49</b>	42.3	42.5	42.4
<b>50 to 65</b>	29.7	29.8	29.1

**Table 16:**  
Participation Rates by Gender Per 1,000 Population

	2006-2007	2007-2008	2008-2009
<b>Female</b>	95.3	97.0	98.5
<b>Male</b>	75.9	78.5	81.4

**Table 17:**  
Participation Rates by Ethnicity Per 1,000 Population

	2006-2007	2007-2008	2008-2009
<b>Asian</b>	115.0	116.1	116.1
<b>Black/African American</b>	116.9	122.9	128.2
<b>Hispanic</b>	88.2	91.0	92.9
<b>Native American</b>	132.2	135.3	137.9
<b>Pacific Islander</b>	180.0	191.7	211.0
<b>White</b>	72.6	73.9	76.2
<b>Multirace</b>	0.0	0.0	2.2

### Results:

Tables 14 to 18 show how the community colleges provide access to higher education for all segments of the state's population. The participants include substantial numbers from all categories of age, gender, and race/ethnicity. For an explanation of population rates exceeding 1,000, see the Introduction to the Systemwide Indicators.

For Methodology and Data Source, See Appendix B.



# ARCC 2010 Report: Systemwide Indicators

## Participation Rates

**Table 18: Participation Rates by Age, Gender, and Ethnicity Per 1,000 Population**

Age	Gender	Ethnicity	2006-2007	2007-2008	2008-2009
18 to 19	Female	Asian	505.0	508.6	506.5
18 to 19	Female	Black/African American	400.6	410.2	418.8
18 to 19	Female	Hispanic	338.6	344.3	352.8
18 to 19	Female	Native American	493.7	487.9	508.6
18 to 19	Female	Pacific Islander	874.3	934.0	1,029.4
18 to 19	Female	White	320.0	321.2	329.1
18 to 19	Female	Multirace	0.0	0.0	9.9
18 to 19	Male	Asian	489.8	495.6	499.2
18 to 19	Male	Black/African American	360.4	371.5	384.2
18 to 19	Male	Hispanic	282.2	289.0	298.3
18 to 19	Male	Native American	366.9	407.7	431.4
18 to 19	Male	Pacific Islander	910.3	984.5	1,030.5
18 to 19	Male	White	286.2	290.6	299.2
18 to 19	Male	Multirace	0.0	0.0	8.1
20 to 24	Female	Asian	377.3	388.7	394.3
20 to 24	Female	Black/African American	287.9	301.0	316.1
20 to 24	Female	Hispanic	235.4	240.6	244.7
20 to 24	Female	Native American	324.7	345.9	352.0
20 to 24	Female	Pacific Islander	533.4	591.4	653.8
20 to 24	Female	White	231.5	232.4	238.7
20 to 24	Female	Multirace	0.0	0.0	5.0
20 to 24	Male	Asian	341.3	353.8	368.5
20 to 24	Male	Black/African American	224.0	237.7	255.0
20 to 24	Male	Hispanic	185.7	192.7	200.6
20 to 24	Male	Native American	257.6	258.8	274.4
20 to 24	Male	Pacific Islander	487.8	533.0	610.7
20 to 24	Male	White	202.4	206.0	215.8
20 to 24	Male	Multirace	0.0	0.0	4.8



# ARCC 2010 Report: Systemwide Indicators

**Table 18** (continued)

Age	Gender	Ethnicity	2006-2007	2007-2008	2008-2009
25 to 29	Female	Asian	177.1	184.4	187.8
25 to 29	Female	Black/African American	181.7	188.9	191.1
25 to 29	Female	Hispanic	121.9	125.2	126.8
25 to 29	Female	Native American	210.1	209.4	215.7
25 to 29	Female	Pacific Islander	208.5	226.4	262.5
25 to 29	Female	White	124.8	127.9	131.6
25 to 29	Female	Multirace	0.0	0.0	2.1
25 to 29	Male	Asian	135.4	142.6	147.3
25 to 29	Male	Black/African American	120.2	129.2	137.7
25 to 29	Male	Hispanic	89.2	93.4	95.6
25 to 29	Male	Native American	160.3	165.0	173.7
25 to 29	Male	Pacific Islander	182.8	195.1	229.4
25 to 29	Male	White	105.6	111.3	116.5
25 to 29	Male	Multirace	0.0	0.0	1.9
30 to 34	Female	Asian	105.9	106.7	106.7
30 to 34	Female	Black/African American	132.8	141.4	143.5
30 to 34	Female	Hispanic	79.3	82.2	82.8
30 to 34	Female	Native American	145.9	160.6	153.6
30 to 34	Female	Pacific Islander	113.7	124.4	135.8
30 to 34	Female	White	71.2	74.0	79.7
30 to 34	Female	Multirace	0.0	0.0	1.2
30 to 34	Male	Asian	72.9	75.6	76.6
30 to 34	Male	Black/African American	86.1	96.8	105.0
30 to 34	Male	Hispanic	56.5	60.3	61.8
30 to 34	Male	Native American	126.4	132.9	138.5
30 to 34	Male	Pacific Islander	108.2	115.6	121.5
30 to 34	Male	White	61.3	65.2	71.7
30 to 34	Male	Multirace	0.0	0.0	0.8



# ARCC 2010 Report: Systemwide Indicators

**Table 18** (continued)

Age	Gender	Ethnicity	2006-2007	2007-2008	2008-2009
35 to 39	Female	Asian	81.7	81.3	78.4
35 to 39	Female	Black/African American	105.9	108.1	108.7
35 to 39	Female	Hispanic	60.0	61.3	60.7
35 to 39	Female	Native American	119.2	118.6	116.0
35 to 39	Female	Pacific Islander	85.8	88.3	98.9
35 to 39	Female	White	55.1	54.7	55.2
35 to 39	Female	Multirace	0.0	0.0	1.0
35 to 39	Male	Asian	52.6	52.6	52.2
35 to 39	Male	Black/African American	70.3	76.5	82.4
35 to 39	Male	Hispanic	39.3	41.7	42.8
35 to 39	Male	Native American	104.0	95.1	101.8
35 to 39	Male	Pacific Islander	87.0	89.9	93.5
35 to 39	Male	White	45.2	46.4	48.7
35 to 39	Male	Multirace	0.0	0.0	0.6
40 to 49	Female	Asian	62.8	62.4	61.1
40 to 49	Female	Black/African American	82.3	83.2	82.7
40 to 49	Female	Hispanic	47.7	48.5	0.0
40 to 49	Female	Native American	88.2	85.6	84.0
40 to 49	Female	Pacific Islander	68.2	69.6	74.7
40 to 49	Female	White	46.9	46.3	45.9
40 to 49	Female	Multirace	0.0	0.0	0.6
40 to 49	Male	Asian	36.3	36.8	36.3
40 to 49	Male	Black/African American	55.2	57.6	61.2
40 to 49	Male	Hispanic	29.6	30.7	30.0
40 to 49	Male	Native American	69.8	71.5	74.5
40 to 49	Male	Pacific Islander	60.3	61.7	66.2
40 to 49	Male	White	32.7	32.9	33.8
40 to 49	Male	Multirace	0.0	0.0	0.4



# ARCC 2010 Report: Systemwide Indicators

**Table 18** (continued)

Age	Gender	Ethnicity	2006-2007	2007-2008	2008-2009
50 to 65	Female	Asian	42.1	40.7	40.1
50 to 65	Female	Black/African American	46.1	47.3	47.0
50 to 65	Female	Hispanic	29.0	30.2	29.1
50 to 65	Female	Native American	58.3	59.9	54.7
50 to 65	Female	Pacific Islander	42.9	42.1	46.8
50 to 65	Female	White	37.3	37.2	36.3
50 to 65	Female	Multirace	0.0	0.0	0.6
50 to 65	Male	Asian	26.4	25.4	25.1
50 to 65	Male	Black/African American	33.8	35.1	35.6
50 to 65	Male	Hispanic	18.2	18.9	18.5
50 to 65	Male	Native American	43.2	44.3	43.0
50 to 65	Male	Pacific Islander	31.9	33.9	33.8
50 to 65	Male	White	22.7	22.8	22.3
50 to 65	Male	Multirace	0.0	0.0	0.1

---

## Results:

For an explanation of population rates exceeding 1,000, see the Introduction to the Systemwide Indicators.

For Methodology and Data Source, See Appendix B.

