

# **FUNDING FORMULA INFORMATION**

**FACULTY SENATE**

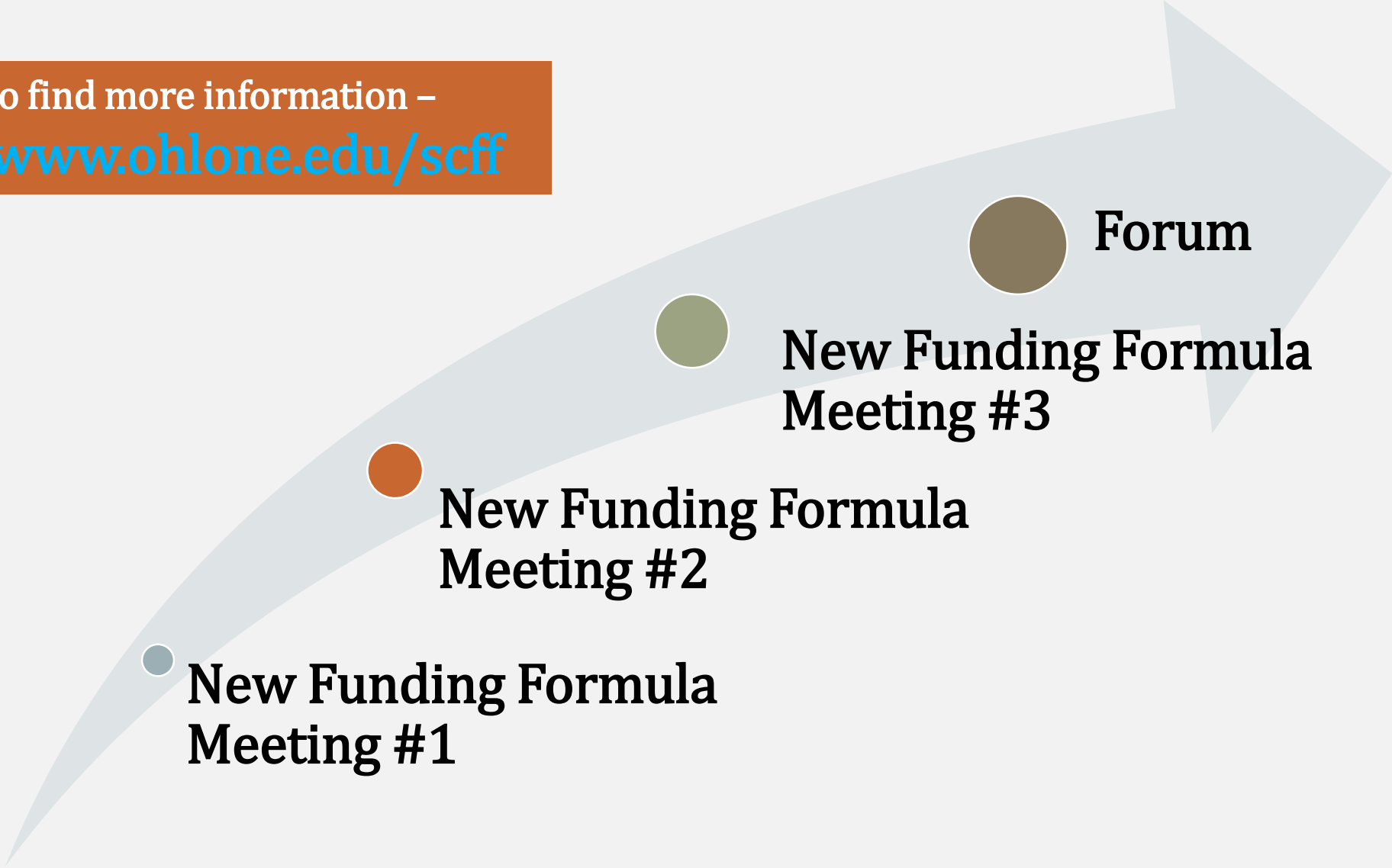
**March 6, 2019**

# THREE-PRONGED APPROACH



# WHAT WE DID & WHERE WE ARE GOING

Where to find more information –  
<https://www.ohlone.edu/scff>

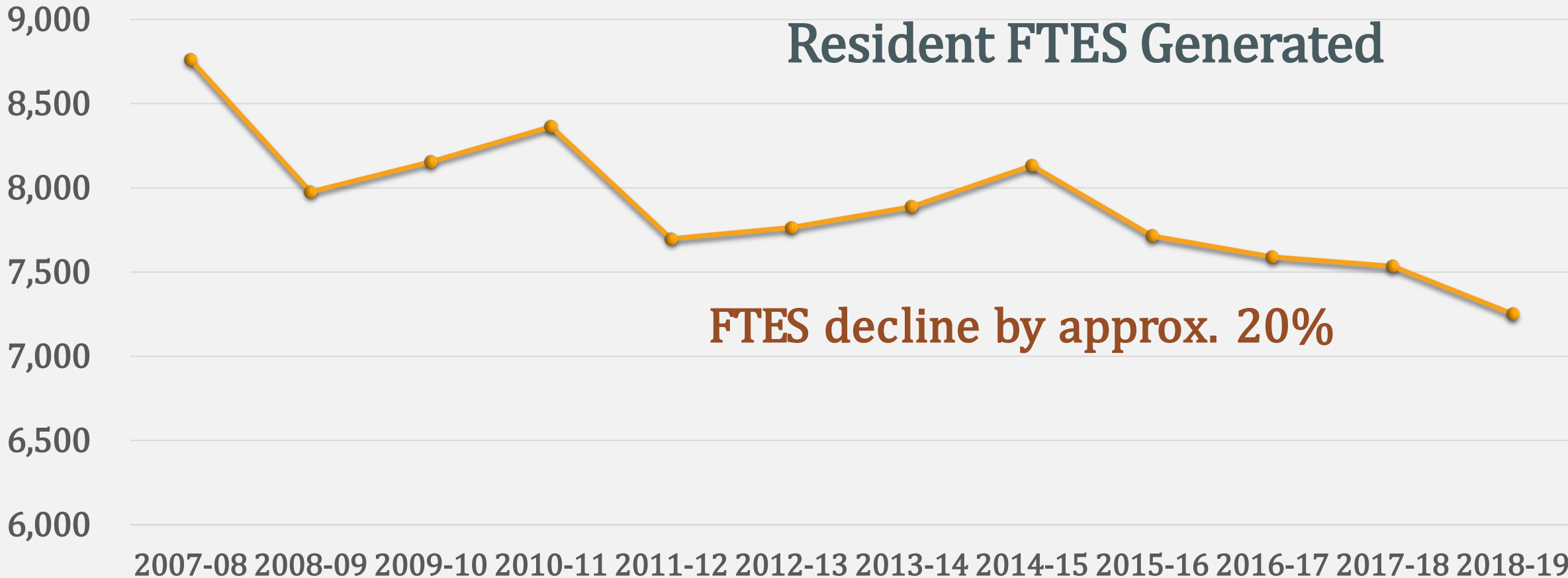




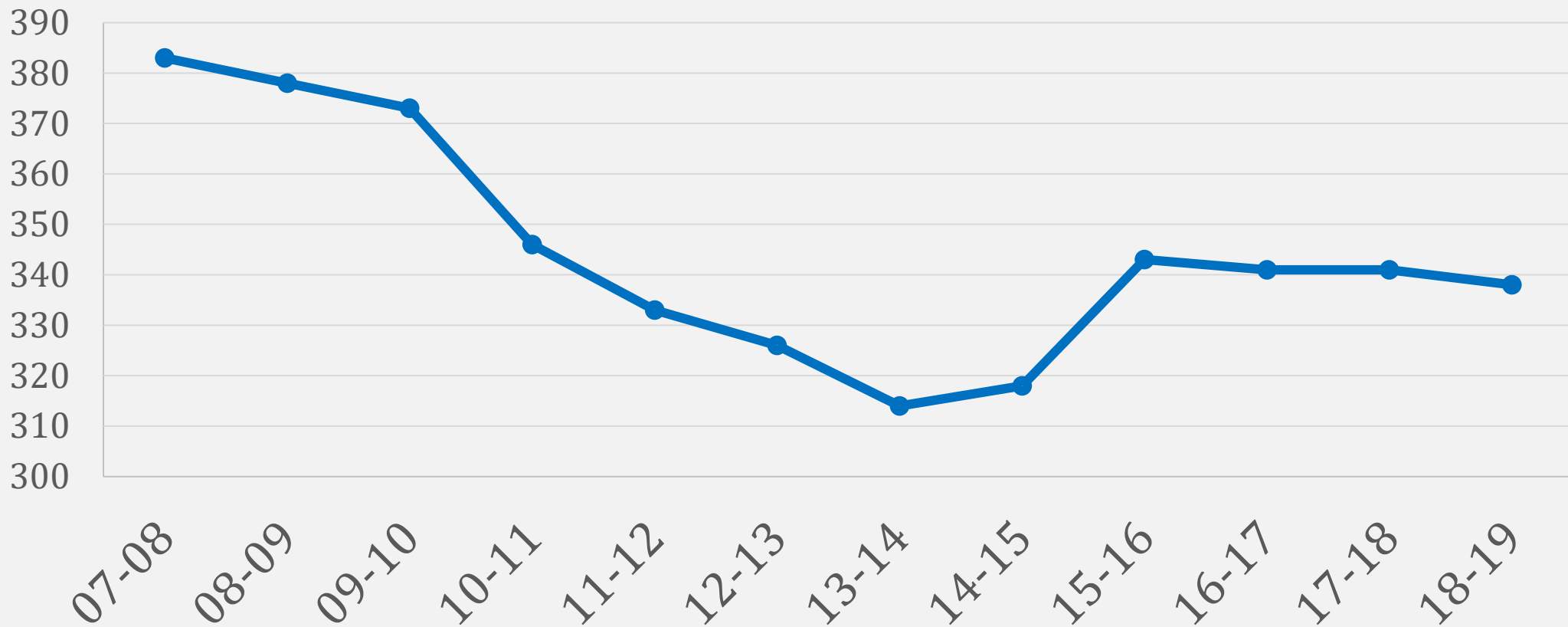
WHERE ARE WE ON THE BUDGET?  
(MULTI-YEAR BUDGET PROJECTION)



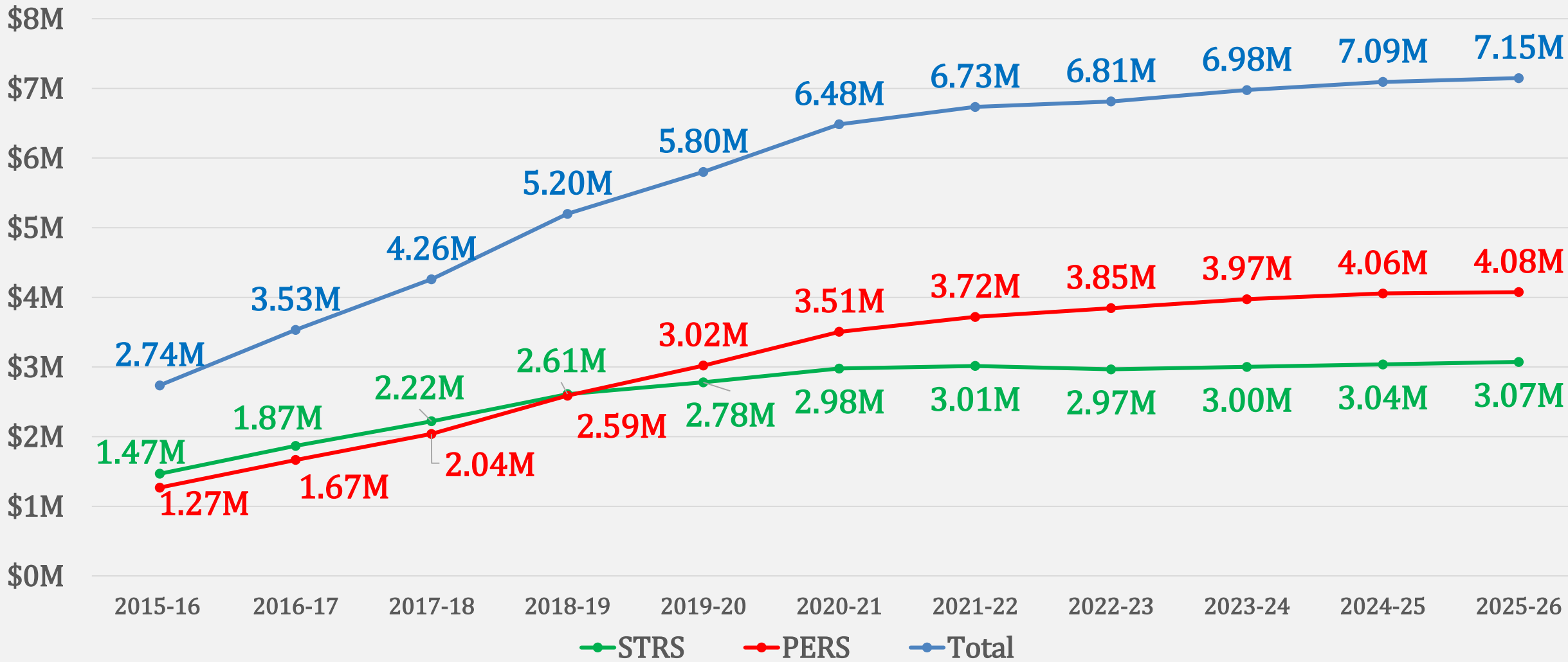
# FULL TIME EQUIVALENT STUDENTS (FTES)



**NUMBER OF FULL TIME EMPLOYEES**  
FT EMPLOYEE COUNT DECLINED BY APPROX. 11%



# RETIREMENT CONTRIBUTIONS (STRS/PERS)



\*Based on 2018/19 staffing levels and annual step/column increases. Amounts subject to change.

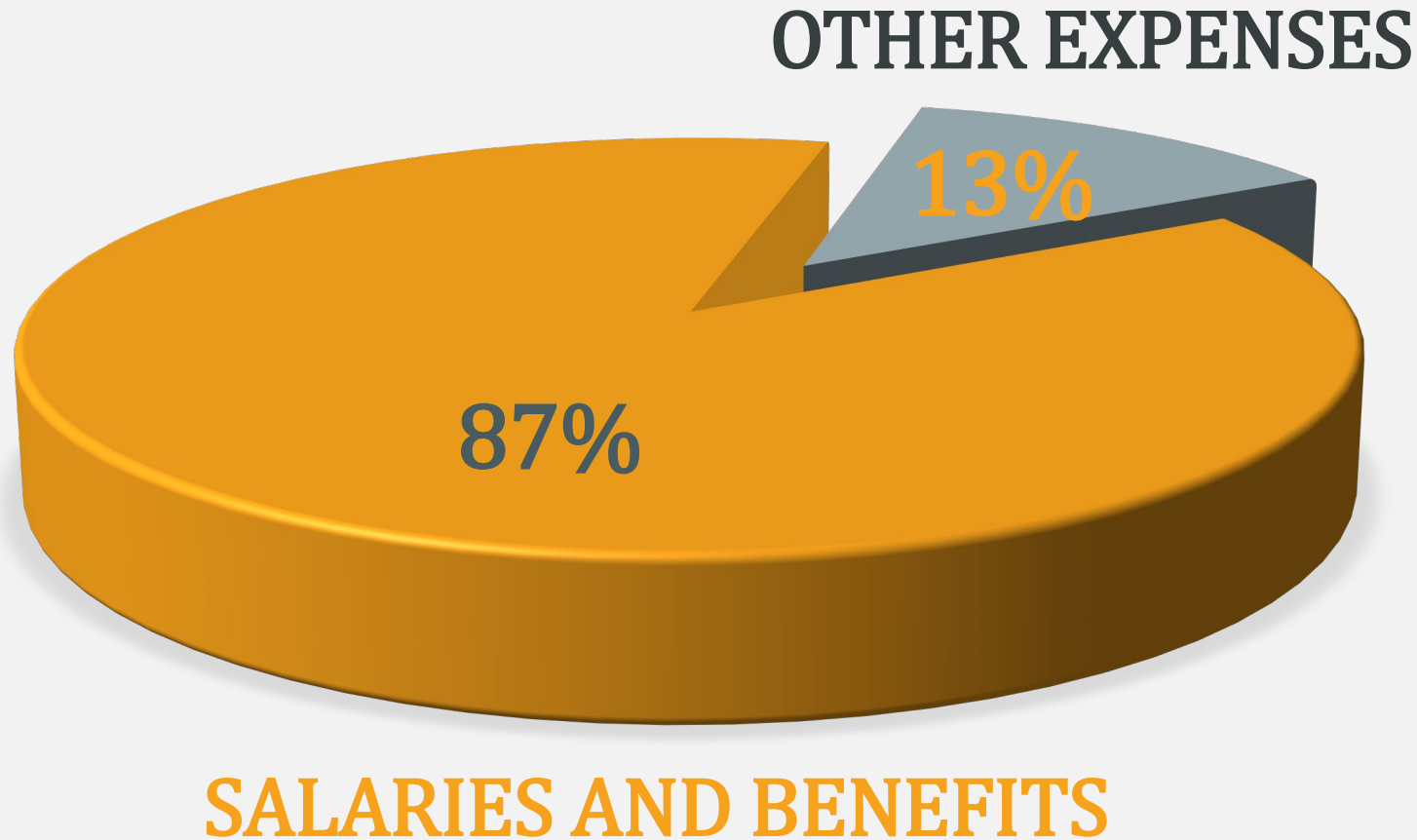
# UNRESTRICTED GENERAL FUND (FUND 10)

## MULTI YEAR PROJECTION

	2018-2019 Q 2	2019-2020 Projected	2020-2021 Projected	2021-2022 Projected
<b>Revenue</b>				
Apportionment per SCFF	45,520,076	45,287,168	46,304,142	46,921,119
<b>Hold Harmless Funds</b>	<b>4,565,508</b>	<b>6,531,376</b>	<b>6,996,413</b>	<b>0</b>
Other Sources	7,736,725	7,726,308	7,732,586	7,739,229
Est. Total Revenue	57,822,309	59,544,852	61,033,140	54,660,348
Est. Total Expenditures	59,103,801	60,069,355	61,381,969	61,913,181
<b>Est. Total Budget Short Fall</b>	<b>(1,281,492)</b>	<b>(524,503)</b>	<b>(348,829)</b>	<b>(7,252,834)</b>
Beginning Fund Balance	11,155,752	9,874,260	9,349,757	9,000,928
Est. Ending Fund Balance	9,874,260	9,349,757	9,000,928	1,748,095
Fund Balance (% Expense)	16.71%	15.56%	14.66%	<b>2.82%</b>



# EXPENDITURE BUDGET – MAJOR BREAKDOWN



- ✓ *Utilities*
- ✓ *Software Licensing*
- ✓ *Insurance*
- ✓ *Service Contracts*
- ✓ *Telephone & Internet*
- ✓ *Legal/Capital Outlay*
- ✓ *Office Supplies*
- ✓ *Training/Conferences*



THANK YOU!

