

# South Parking Structure Fast Facts



The South Parking Structure is the first of several important construction projects that will dramatically renovate Ohlone College's hillside campus in Fremont. Funded by the Measure G Bond, the innovative parking structure will be integrated into Ohlone College's unique sloped landscape, allowing for greater accessibility and providing convenient traversal of the campus. Adhering to Ohlone's commitment to environmental sustainability, the beautiful design will also be coupled with state-of-the-art green construction.

Currently, the bulk of the College's parking lies at the foot of the Ohlone hillside, a five to ten minute walk uphill to the core academic buildings, with over a hundred foot gain in elevation. This structure brings parking to the same elevation as Ohlone's central academic buildings, a welcome respite from the stairs for the campus community.

Additional construction and renovations to the academic buildings, slated to run through 2018, will advance this concept, seamlessly connecting the parking structure to the different levels of campus and areas where most students spend their time. The overarching design speaks to a better flow of pedestrian traffic on the Ohlone campus, easing navigation and allowing students fluid interaction with the academic environment and one another.

The design of the South Parking Structure also considers the environment aesthetically; from initial planning, the design process used the context of Ohlone's hillside, resulting in a structure that rises naturally with the sloped landscape, rather than towering above the hills. The elegant profile contrasts sharply with the typical utilitarian edifices that parking structures bring to mind.

These innovations, as well as the beauty of the design concepts of Steinberg Architects, resulted in the South Parking Structure receiving the 2013 Community College Facility Coalition's Professional Design Award.

*Proud recipient of the*

## 2013 CCFC Professional Design Award

### The Numbers

**Concrete** 10,500 cubic yards

**Steel** 1,200 tons

**Earthwork** 30,000 cubic yards

**Total parking spaces** 906

**Stair steps saved over parking in lower lots** 250

**Increase in upper campus parking spaces** 563

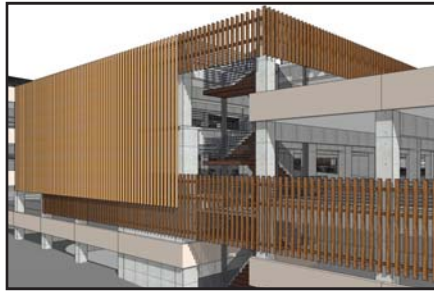
**Construction time** 19 months

Measure G was approved by District voters in November 2010. We are grateful for the community's support in funding necessary repairs, accessibility upgrades and new construction projects to better serve the instructional needs of our students.

## Going Green

The South Parking Structure's gorgeous wood accents are actually Resysta, a fibre reinforced hybrid material made of:

- 60% rice husks
- 22% common salt
- 18% mineral oil



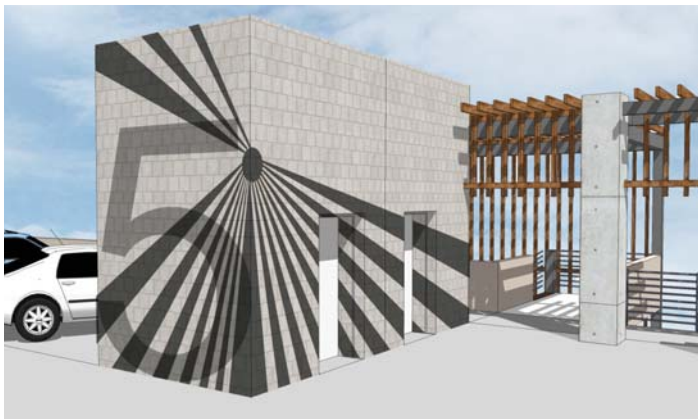
Environmentally friendly and extremely weather resistant!

Any unused construction materials will be repurposed for future Ohlone construction projects.

## Inspired Artwork



*Fourth Floor: Eagle*



*Fifth Floor: Sun*

## Upcoming Measure G Bond Projects

### Construction Schedules

- **Swing Space**  
February 2014 - December 2014
- **Site Infrastructure**  
Summer 2014 - Summer 2015
- **Athletic Fields**  
Summer 2015 - Summer 2016
- **Academic Core**  
Demolition - Summer 2015  
Construction - Fall 2015 - Fall 2017

## Steinberg Architects



Gilbane Building Company

